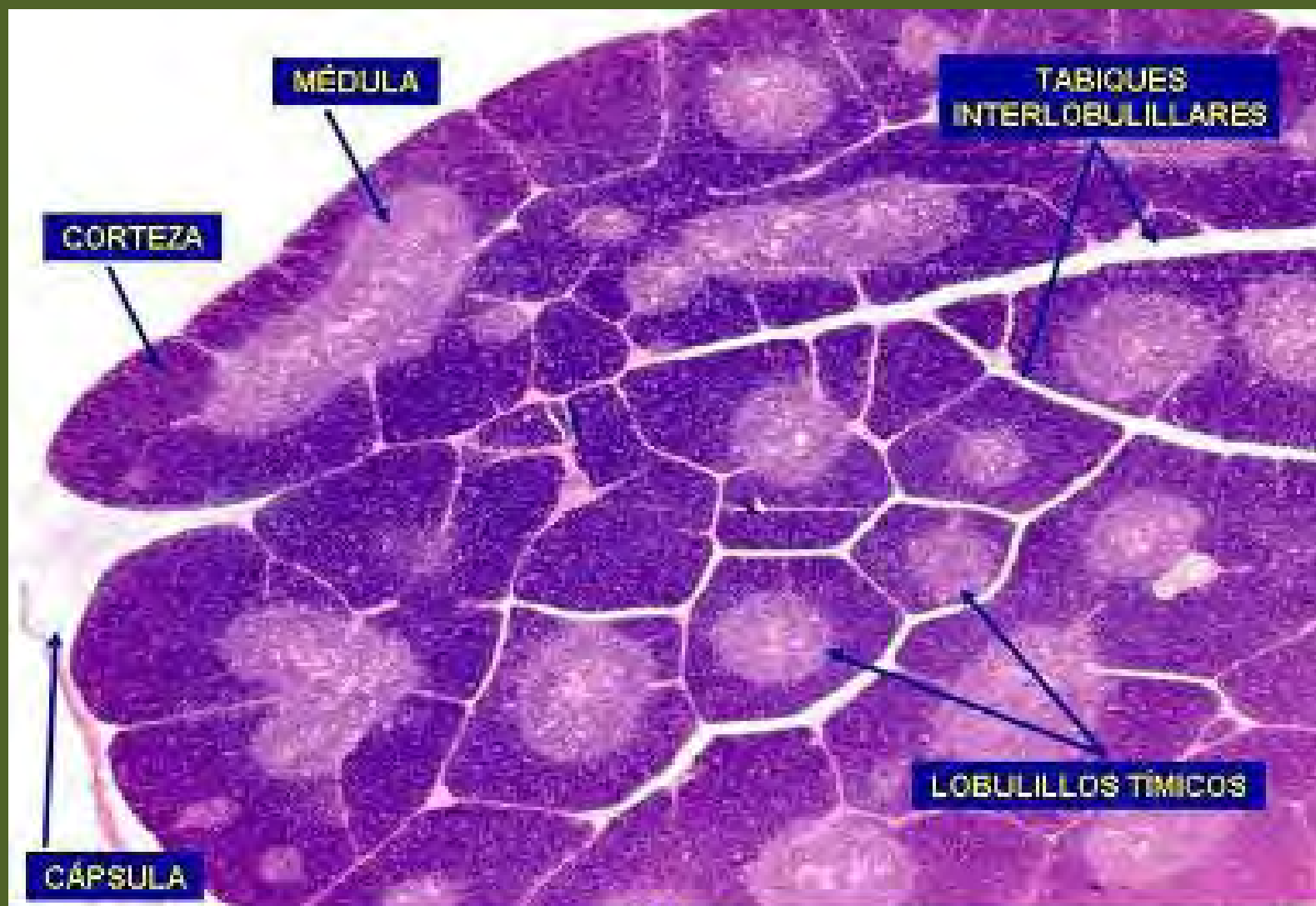


Sistema inmune

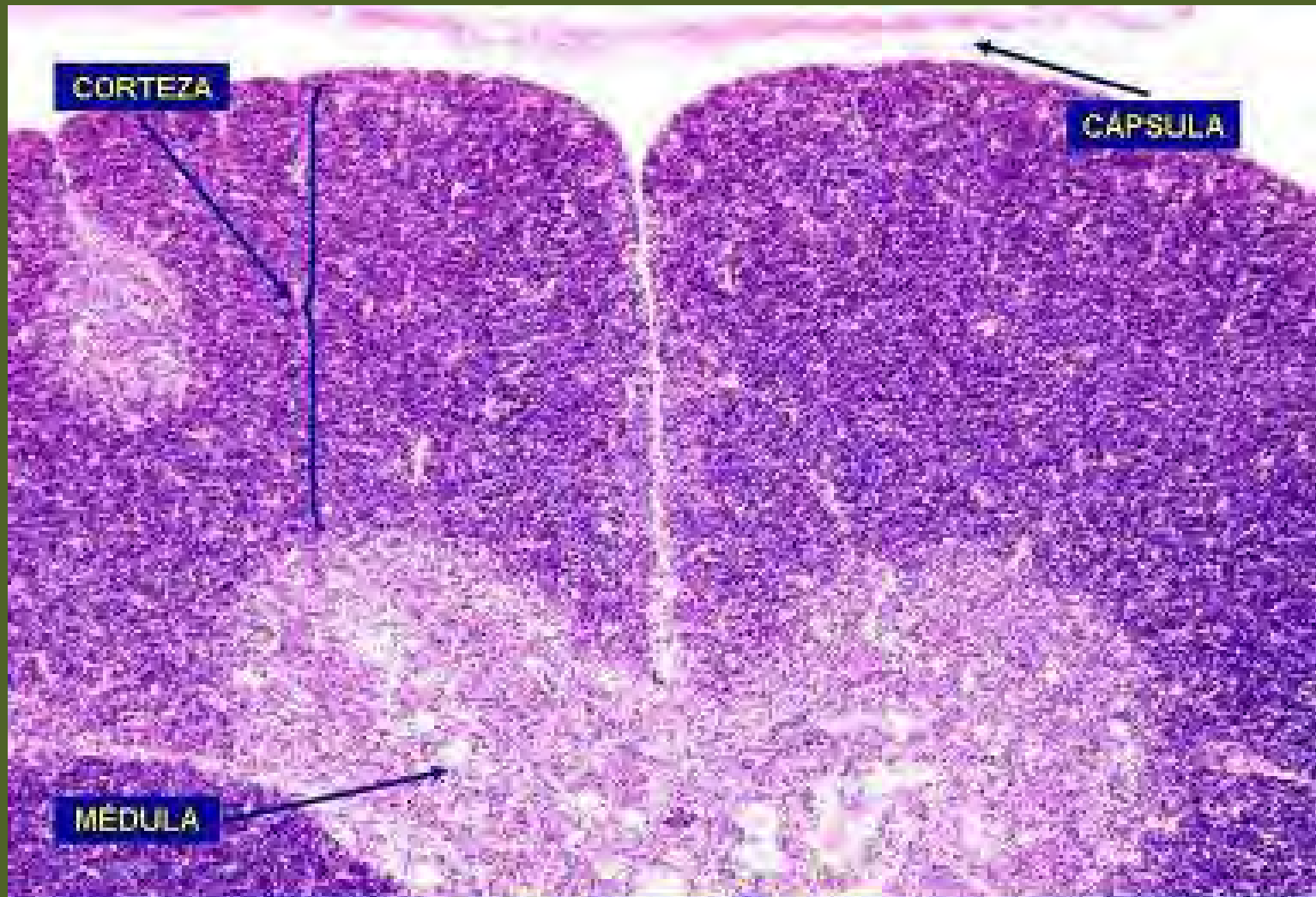
Laminario de Inmune elaborado en el departamento de
Histología del ICBP “Victoria de Girón”

Febrero del 2011

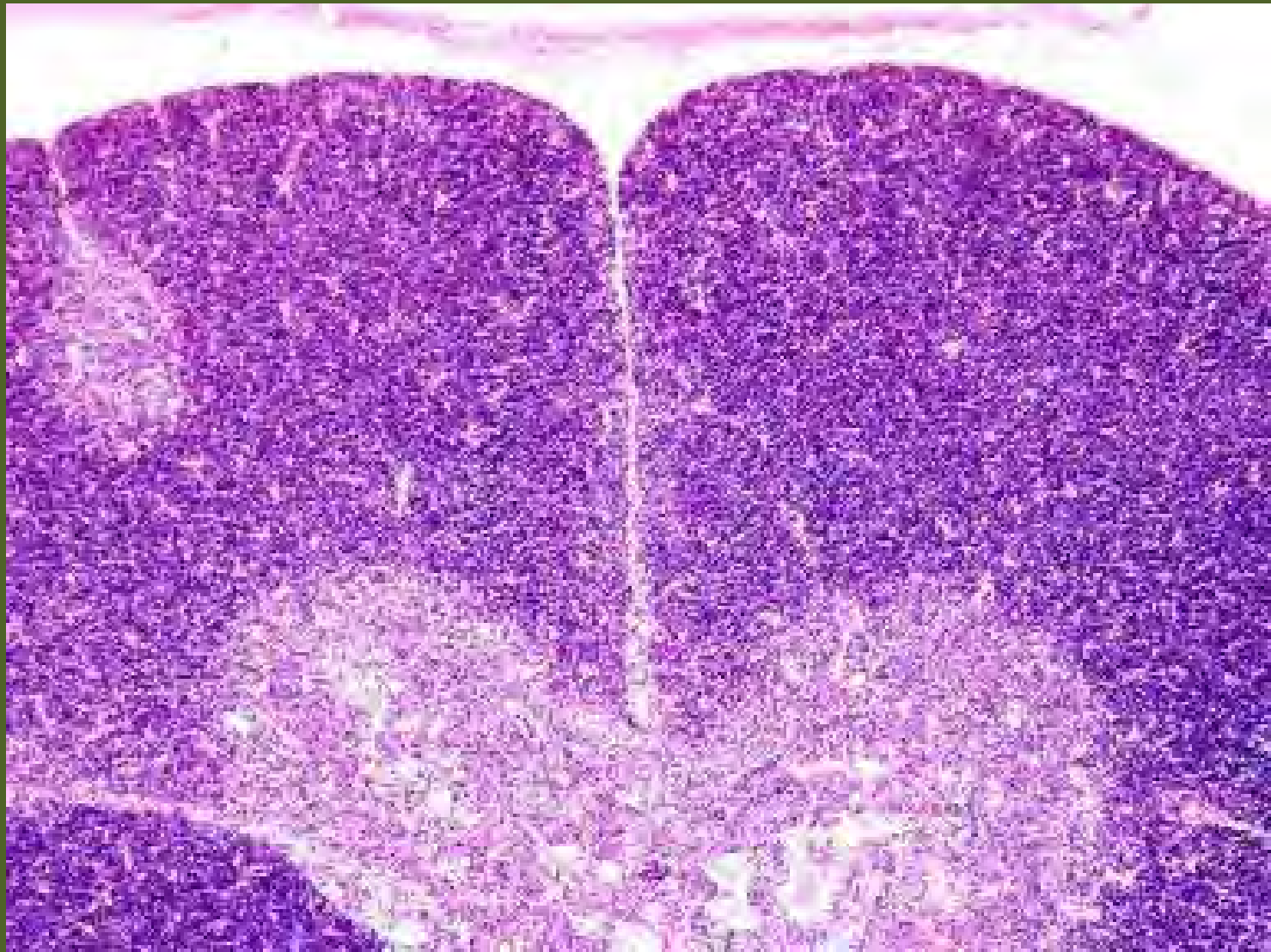


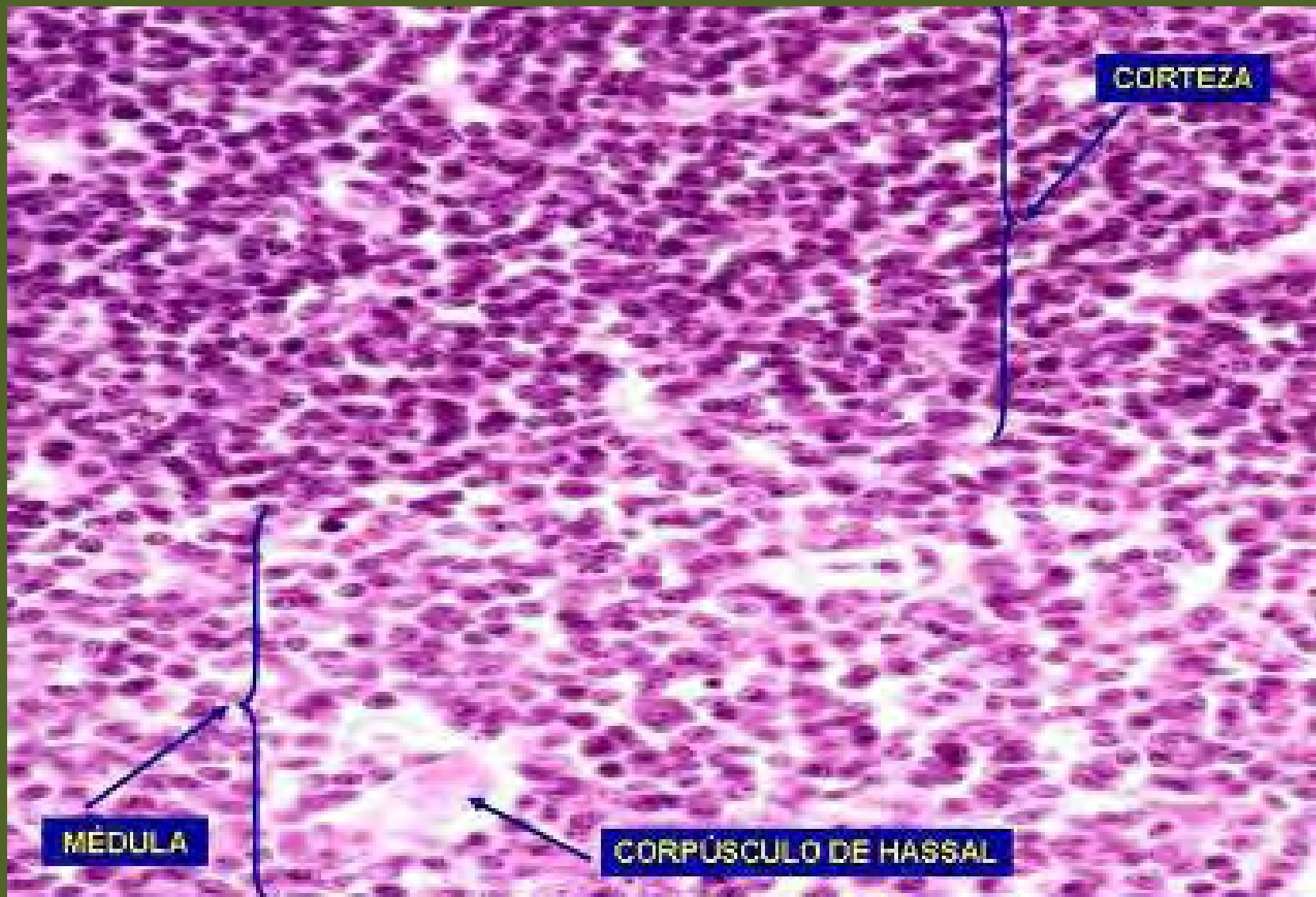
Timo.
Hematoxilina/Eosina. 30X.





Timo. Lobulillo Tímico.
Hematoxilina/Eosina. 100X.



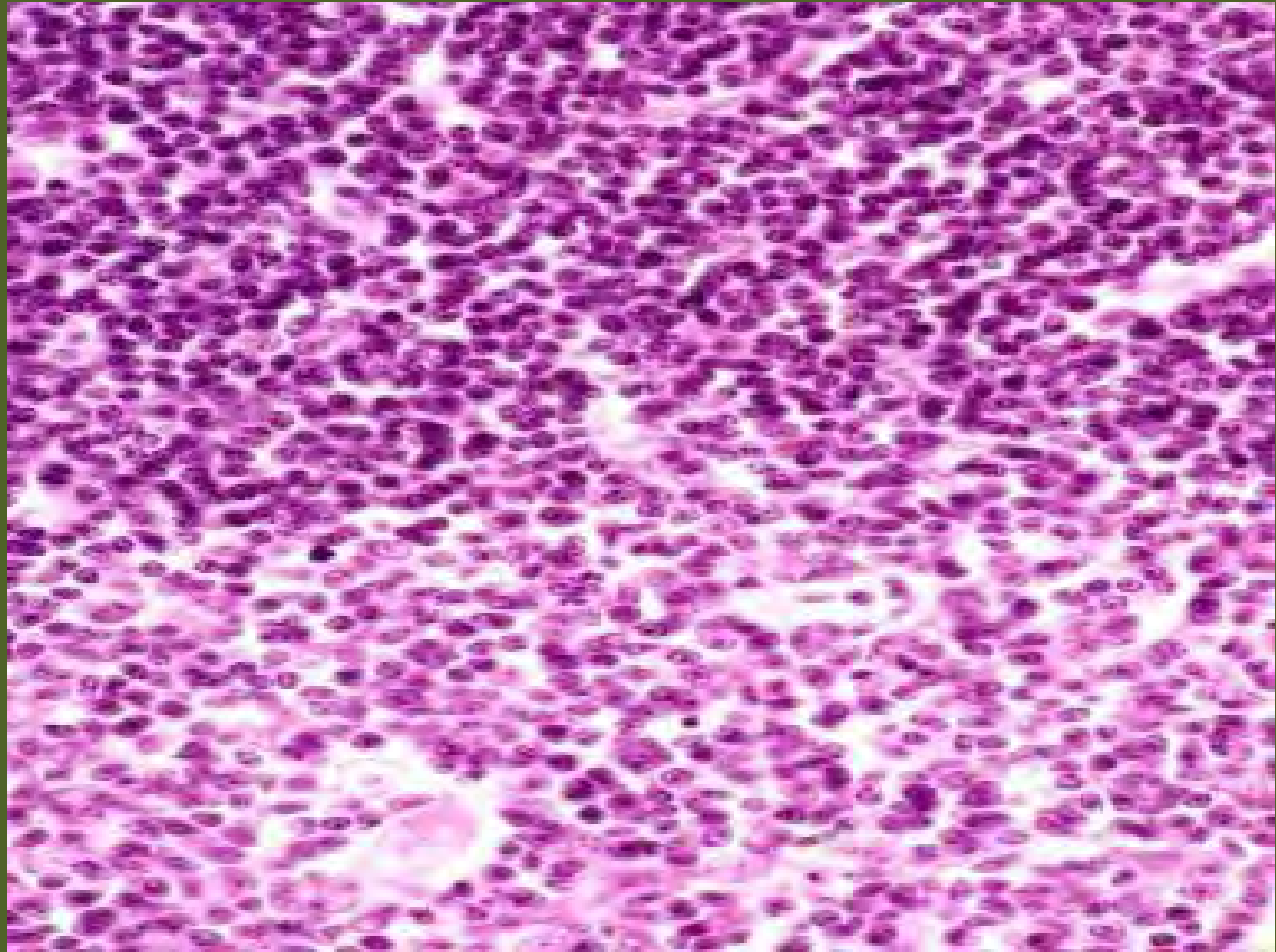


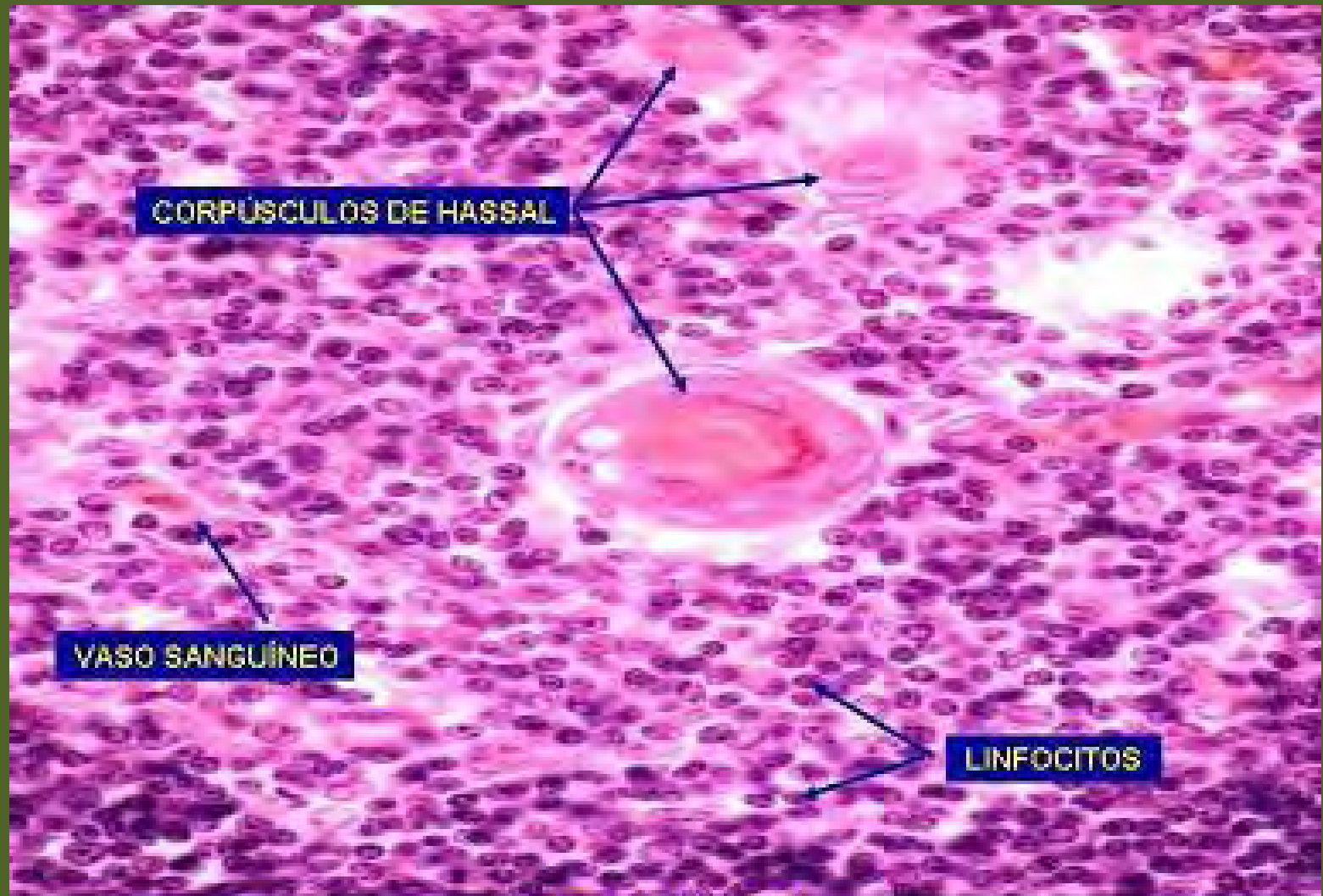
CORTEZA

MÉDULA

CORPÚSCULO DE HASSAL

Timo. Lobulillo Timico.
Hematoxilina/Eosina. 400X.



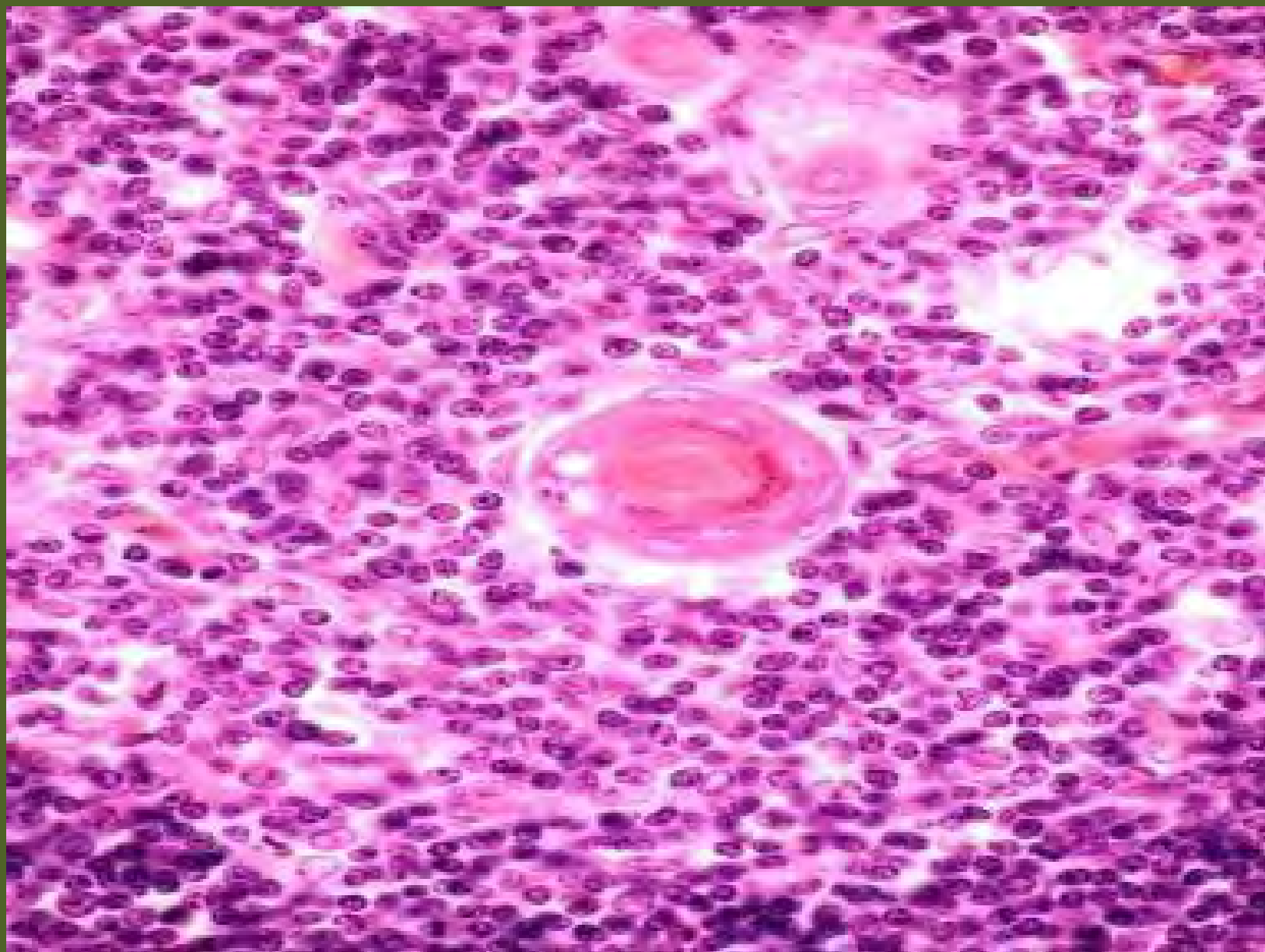


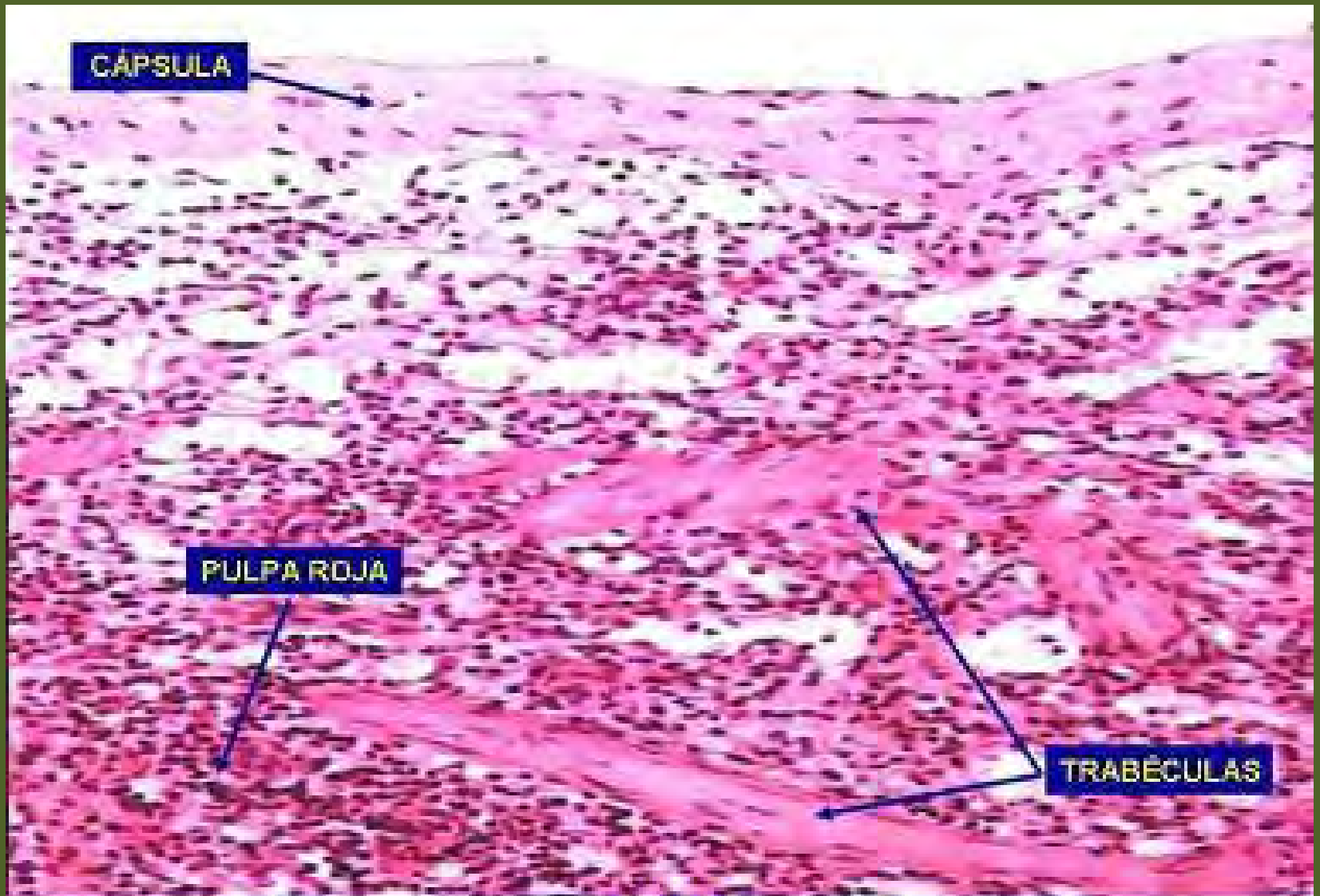
CORPÚSCULOS DE HASSAL

VASO SANGUÍNEO

LINFOCITOS

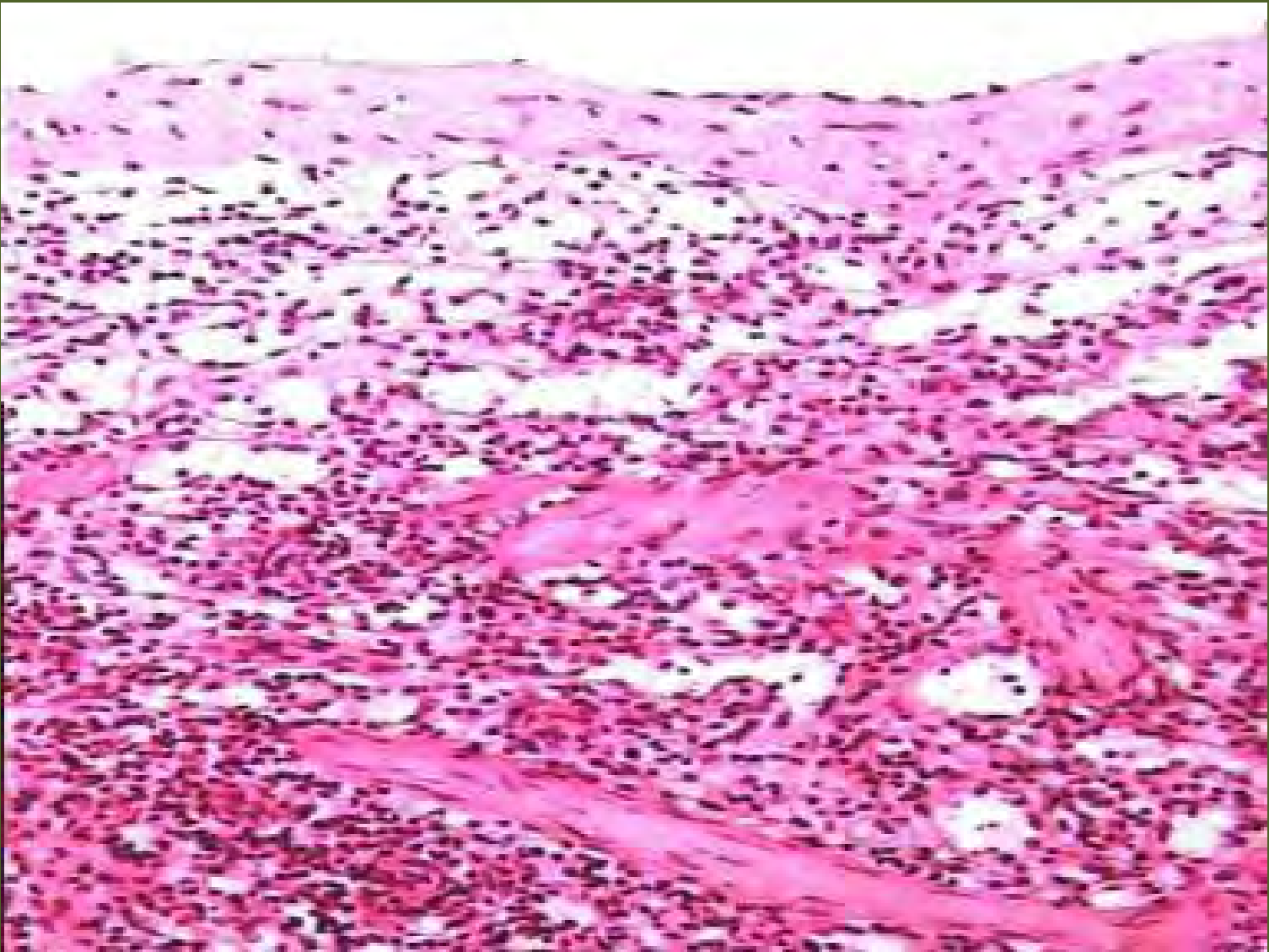
Timo. Médula.
Hematoxilina/Eosina. 500X.

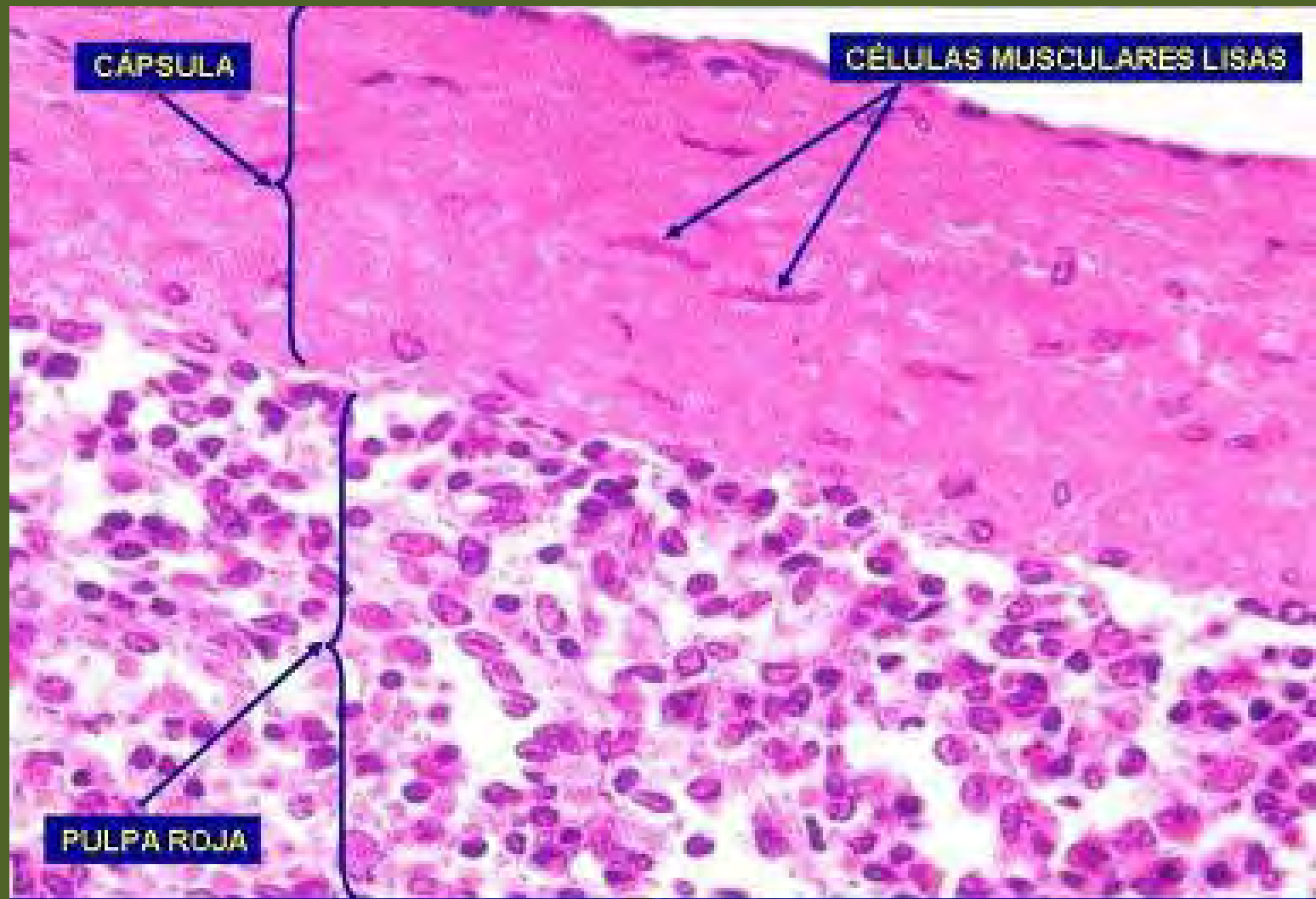




Bazo.

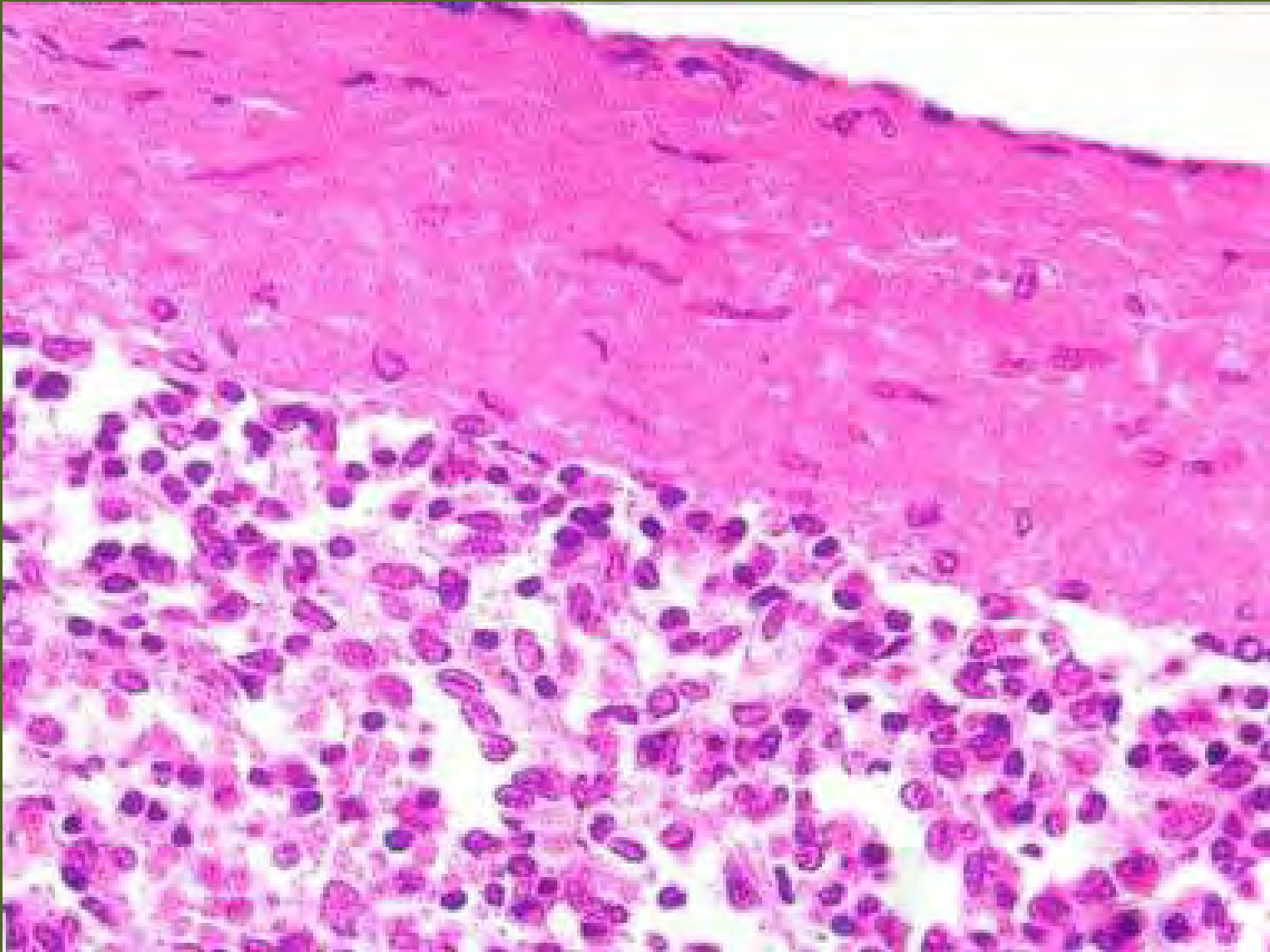
Hematoxilina/Eosina. 250X.

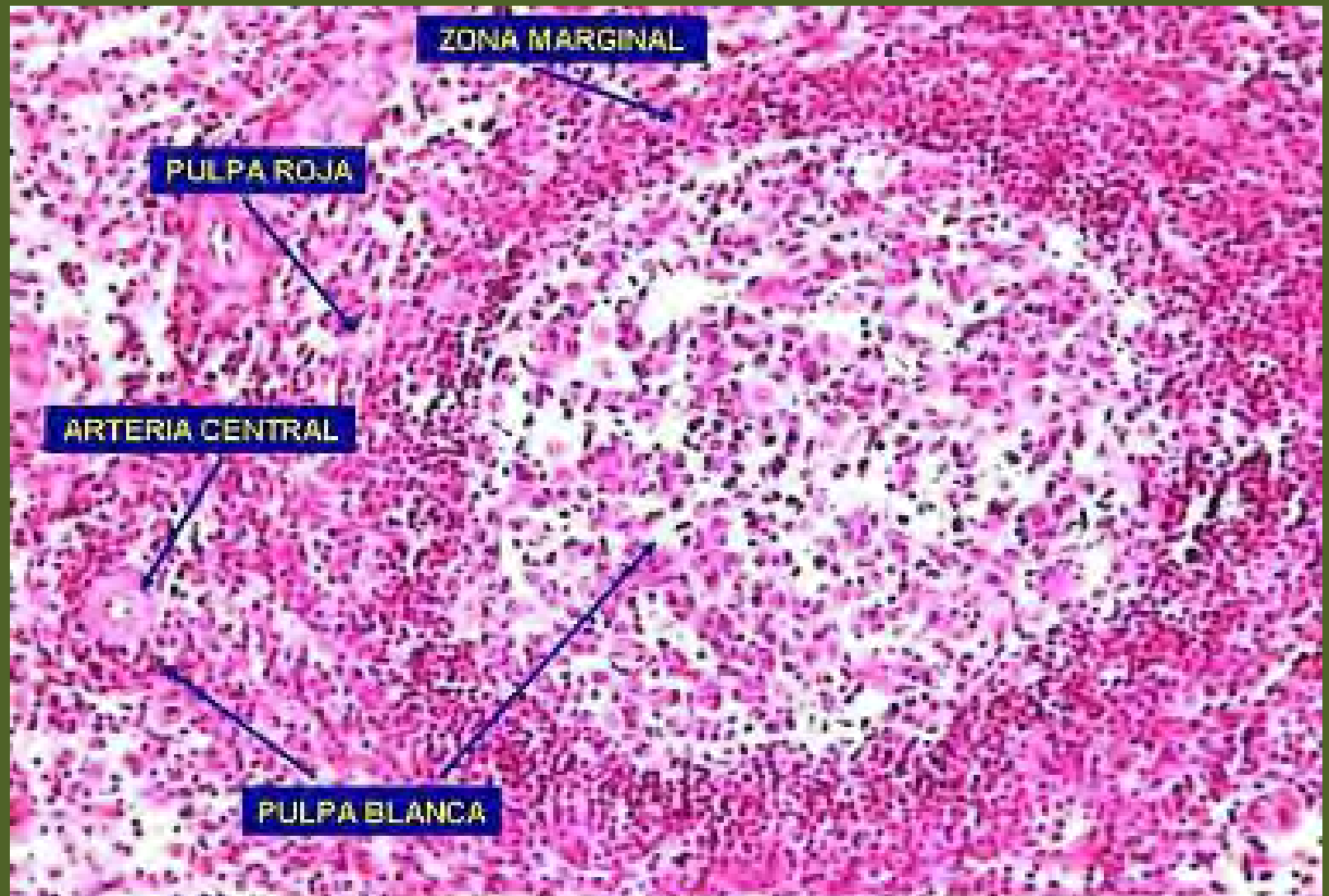




Bazo.

Hematoxilina/Eosina. 400X.





Bazo.

Hematoxilina/Eosina. 250X.

