

**ESTÓMAGO**

This histological image shows a cross-section of the stomach wall. From left to right, the layers are: the mucosa (innermost, showing gastric pits and glands), the submucosa (a layer of loose connective tissue), the muscularis (a thick layer of smooth muscle with distinct inner and outer layers), and the serosa (the outermost layer, consisting of a thin layer of connective tissue and a simple squamous mesothelium). The word 'ESTÓMAGO' is overlaid in large, yellow, stylized letters with a black outline and a drop shadow.

**E  
S  
T  
Ó  
M  
A  
G  
O**

**Mucosa**

**Epitelio simple cilíndrico alto  
secretor de moco neutro.**

**Lámina propia de tejido conectivo  
laxo con infiltración linfática**

**Glándulas: Cardíacas, fúndicas y  
Pilóricas**

**Muscular de la mucosa: Músculo  
liso: interna circular, media  
longitudinal y externa oblicua**

**Submucosa**

**Tejido conectivo mod. denso**

**Vasos sanguíneos y linfáticos**

**Plexo nervioso Meissner**

**Muscular**

**Fibras musculares lisas: oblicuas,  
circulares y longitudinales**

**Serosa**

**Tejido conectivo laxo y mesotelio.**

# GLÁNDULAS DE LA MUCOSA DEL ESTÓMAGO:

**CARDÍACAS:** Tubulares ramificadas mucosas  
Algunas células parietales

**FÚNDICAS**  
(Cuerpo y fondo)

Tubulares rectas: Tres regiones: Istmo, cuello y base.

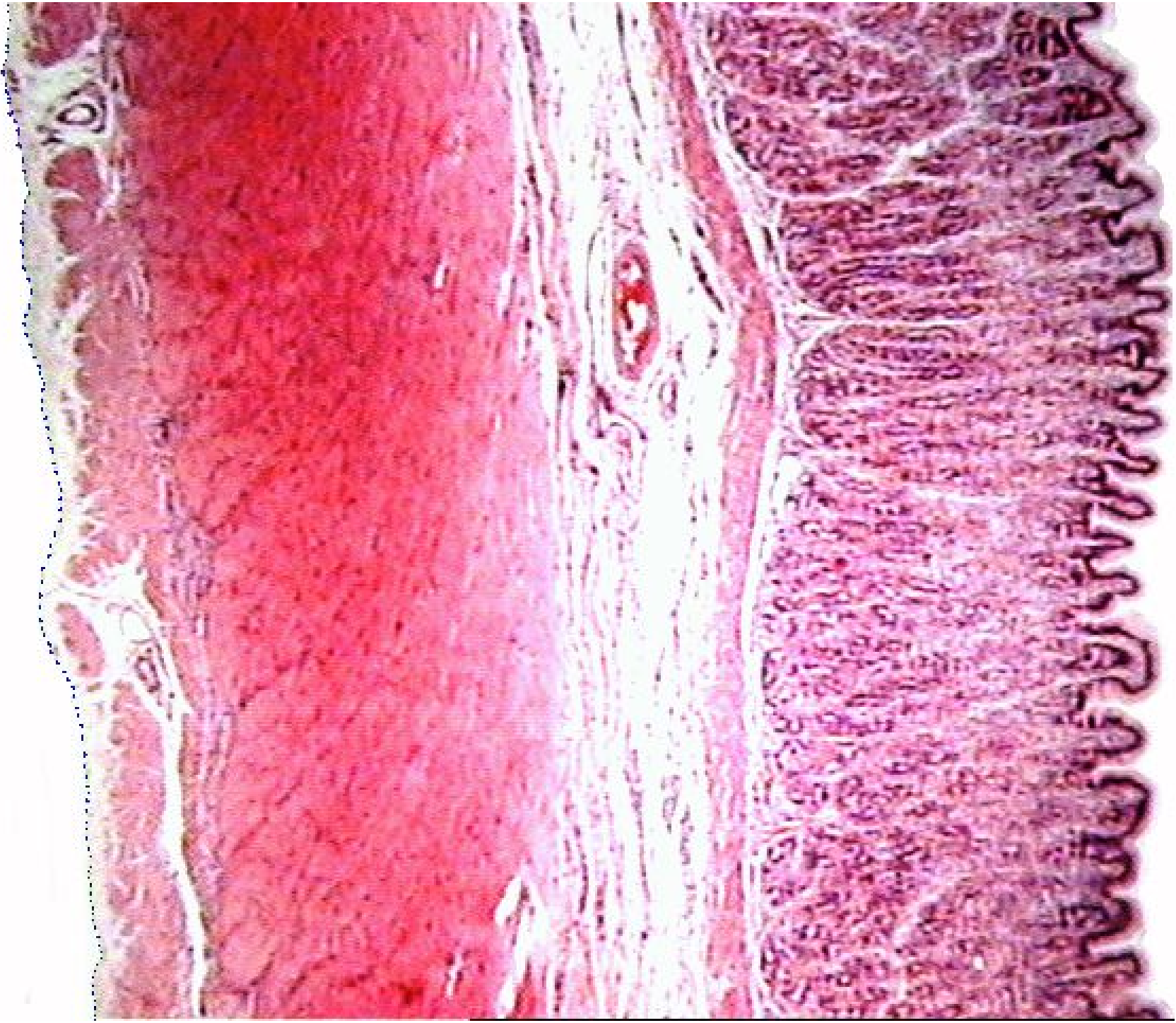
Células: Madres

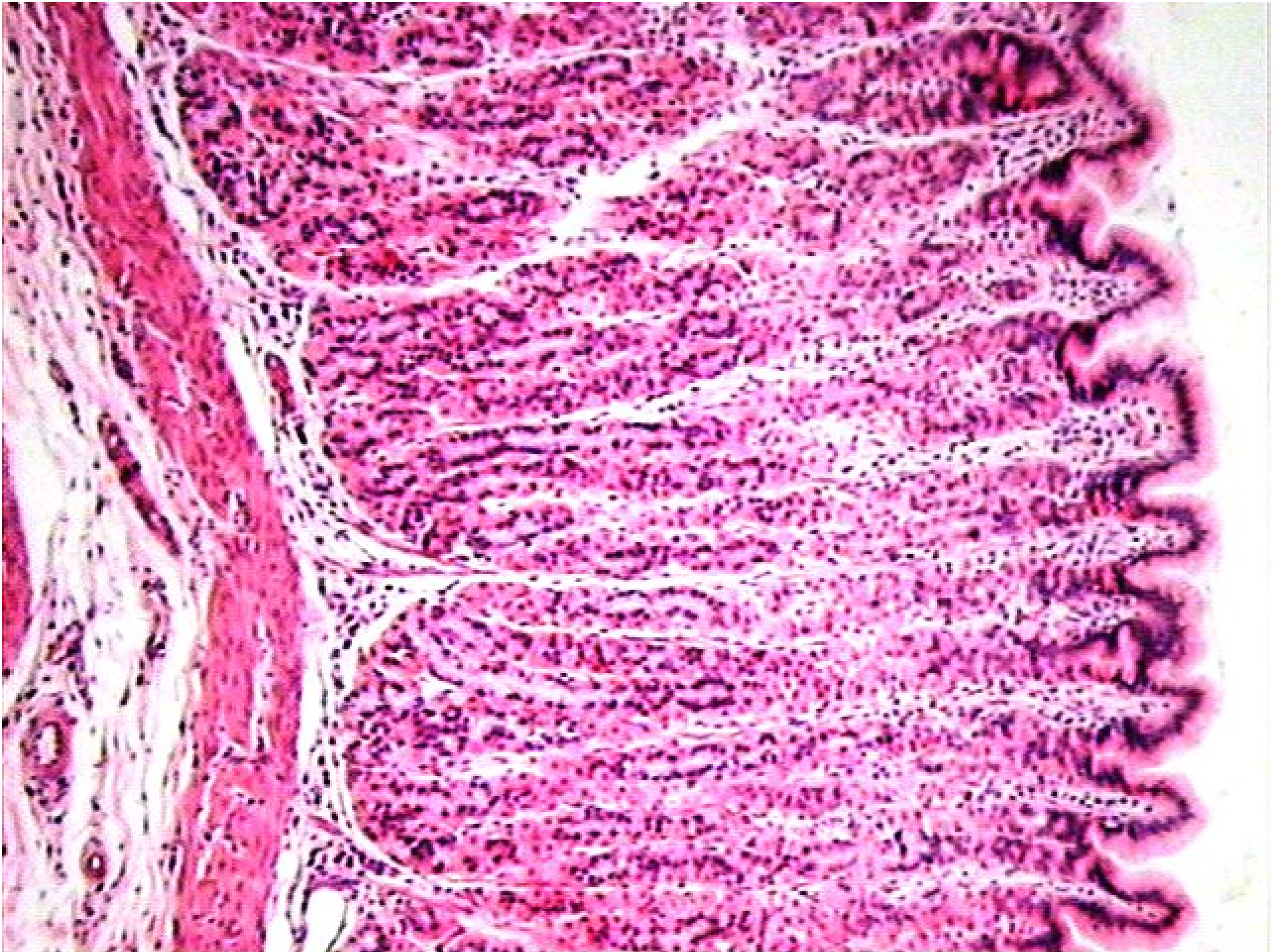
Parietales: HCl y factor intrínseco B12

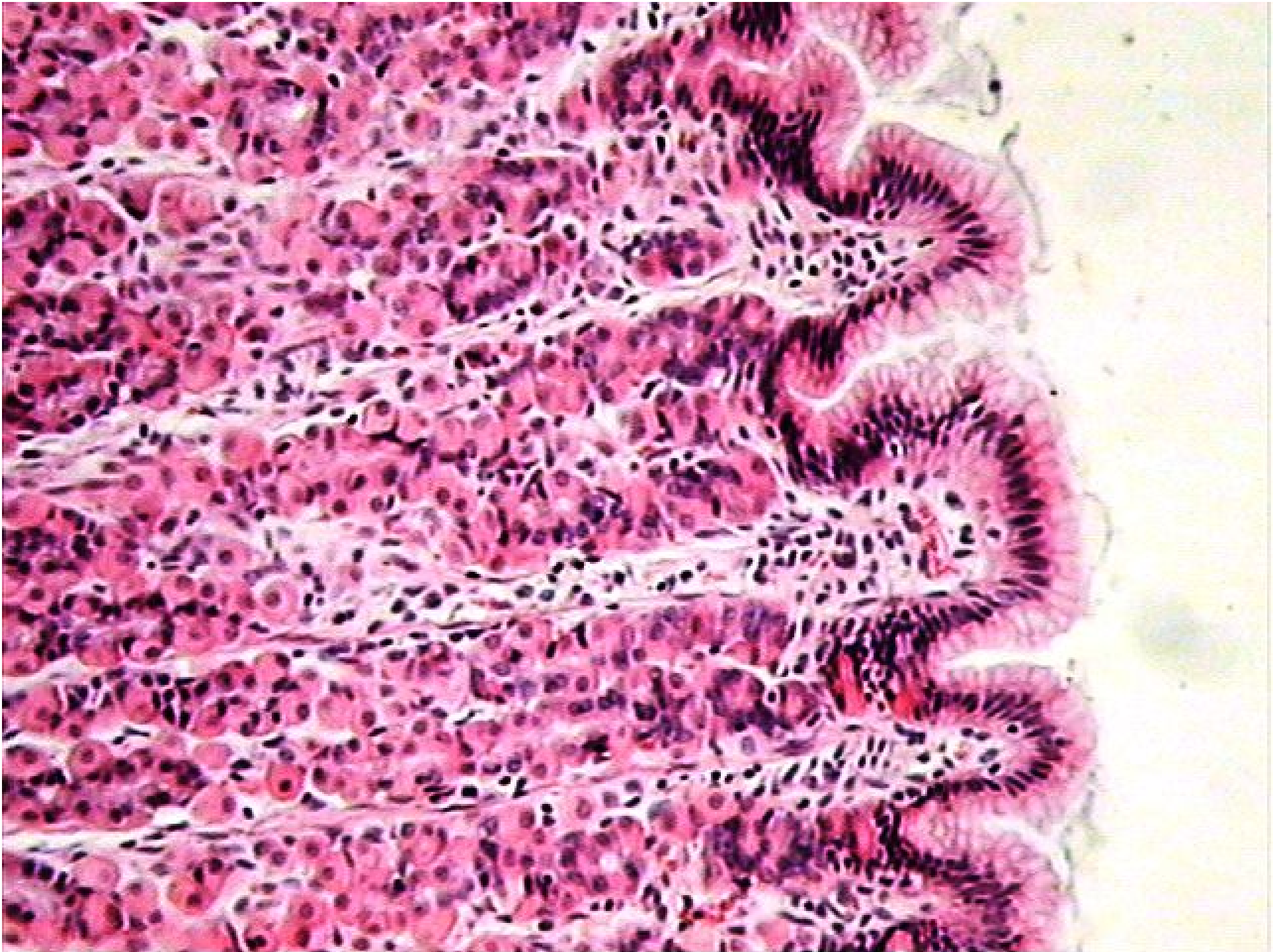
Mucosas del cuello: Mucus ácido

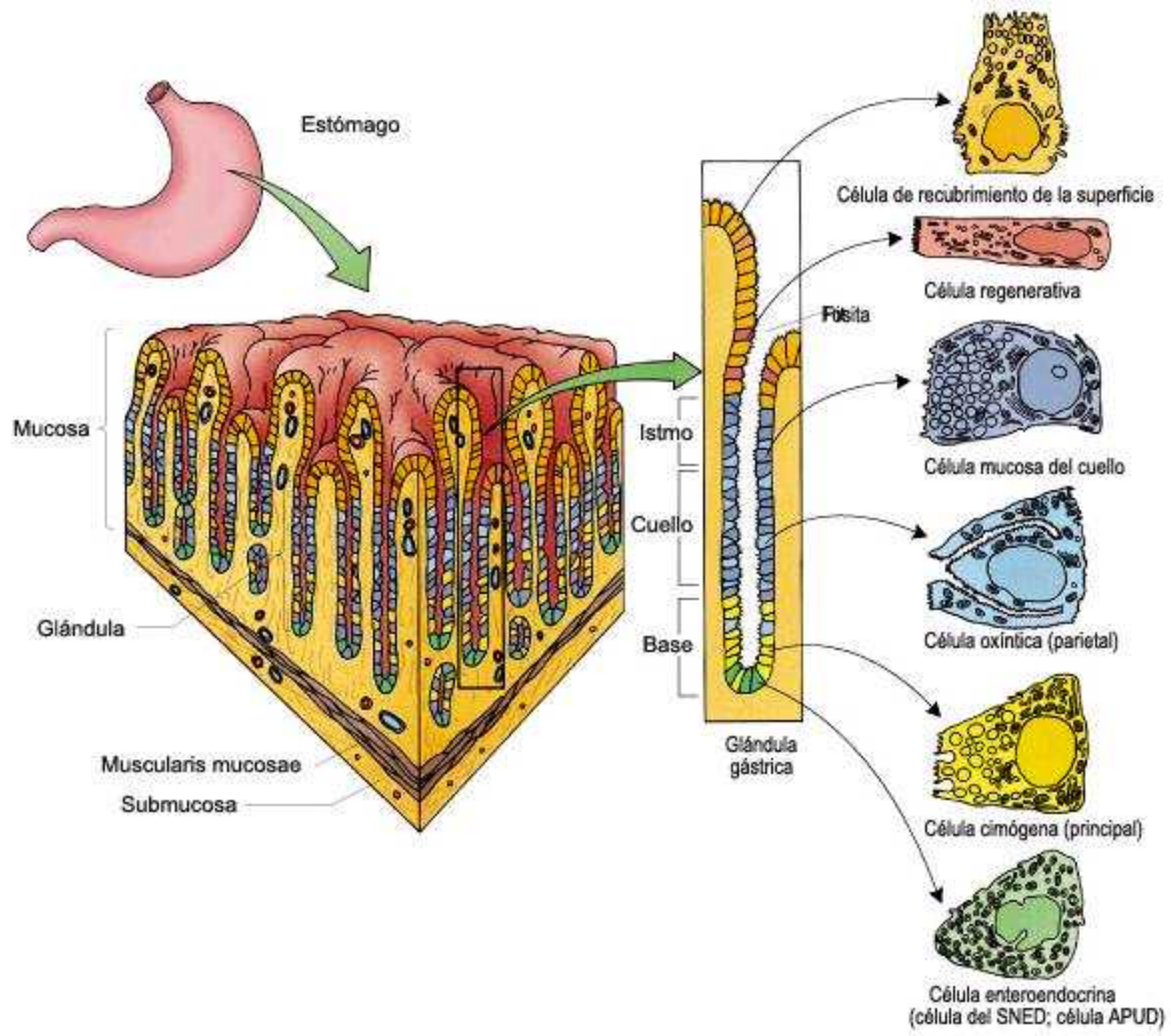
Cimógenas: Segregan pepsina y lipasa

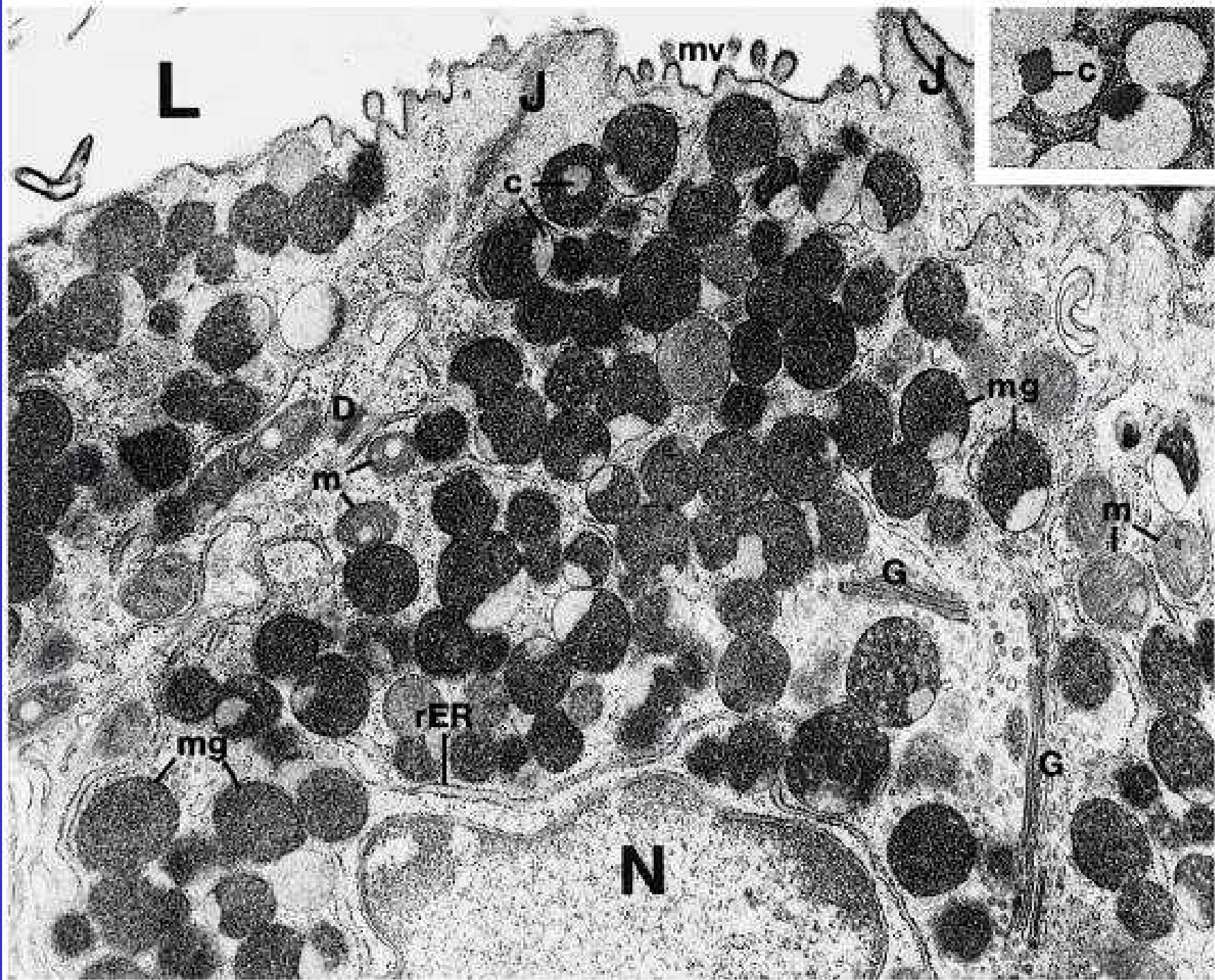
Enteroendocrinas: Segregan gastrina, serotonina, VIP, glucagón





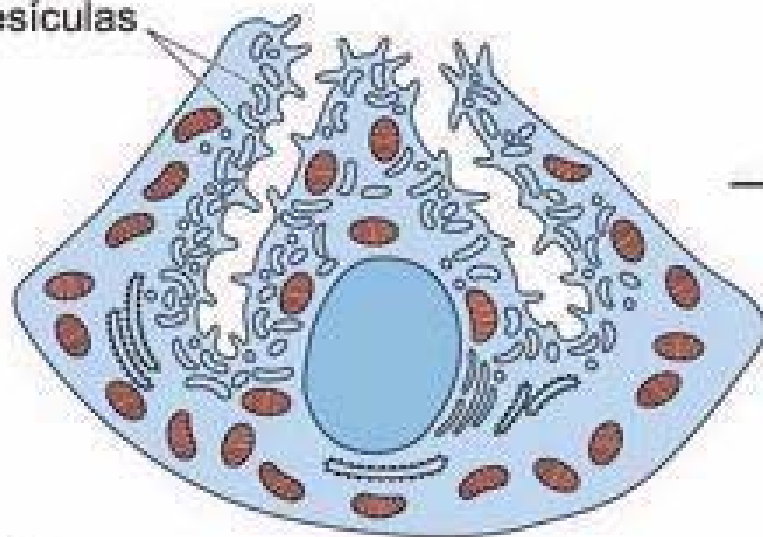








Tubulovesículas

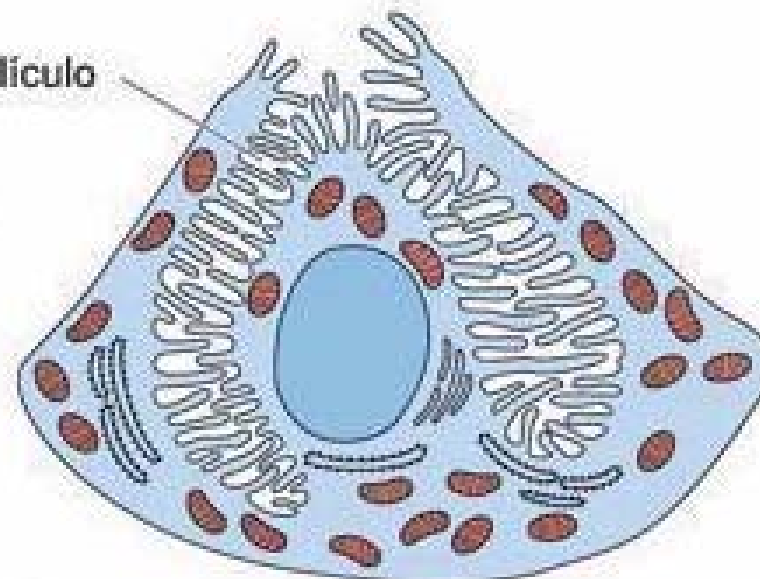


A

REPOSO



Canaliculo



C

ACTIVA