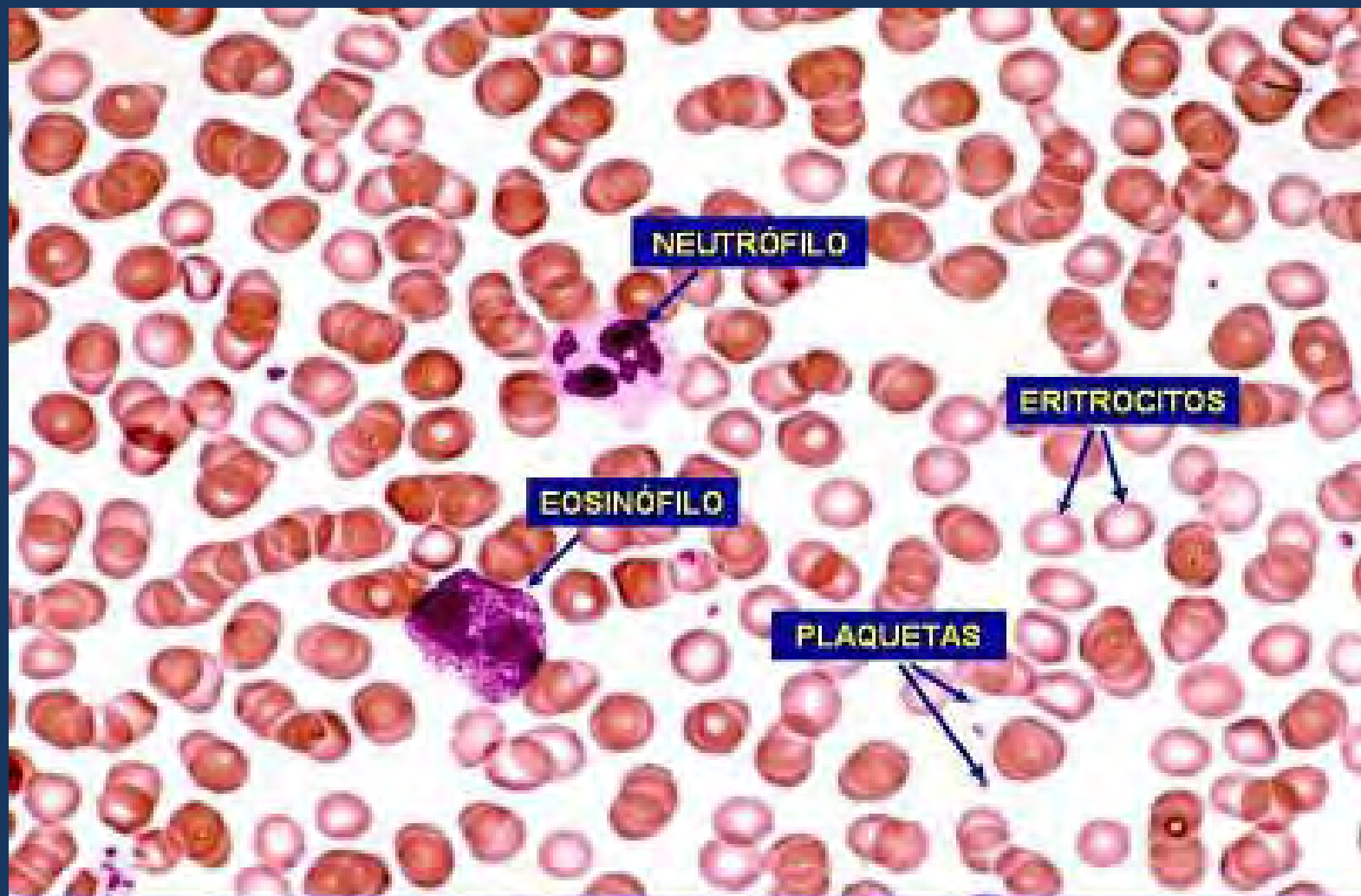


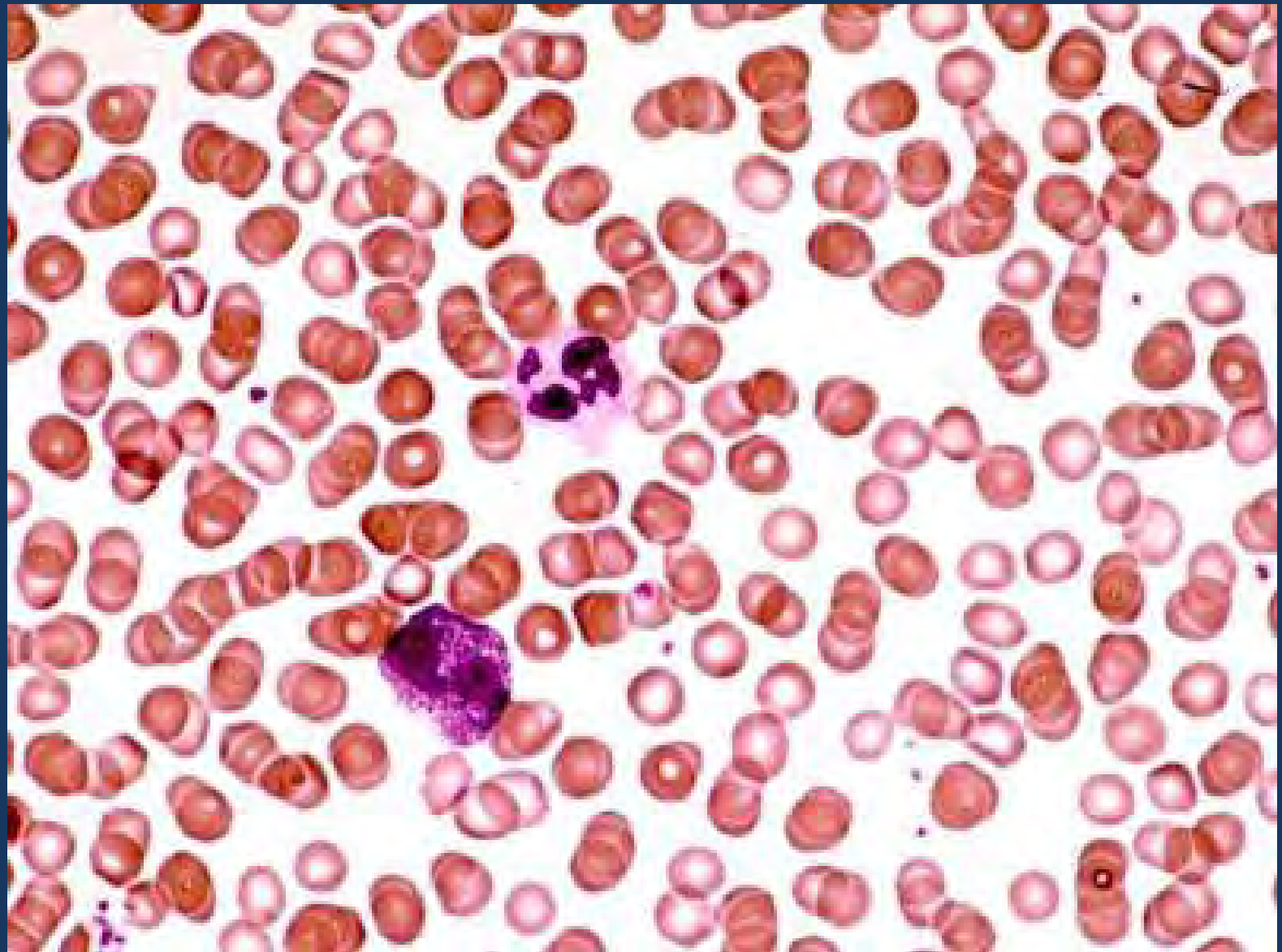


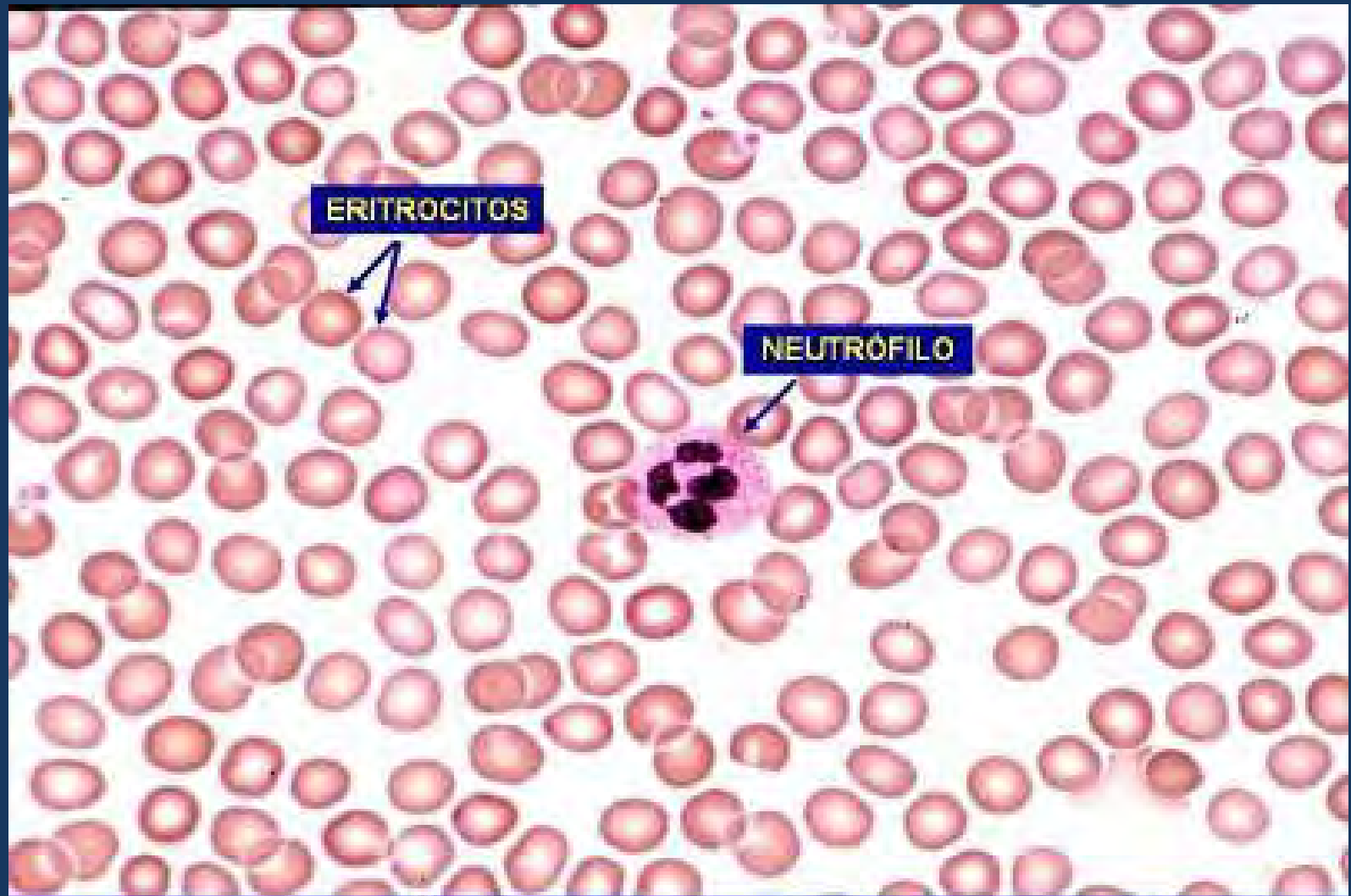
Sangre

Laminario virtual elaborado en el Departamento de Histología del ICBP "Victoria de Girón".
Febrero del 2011

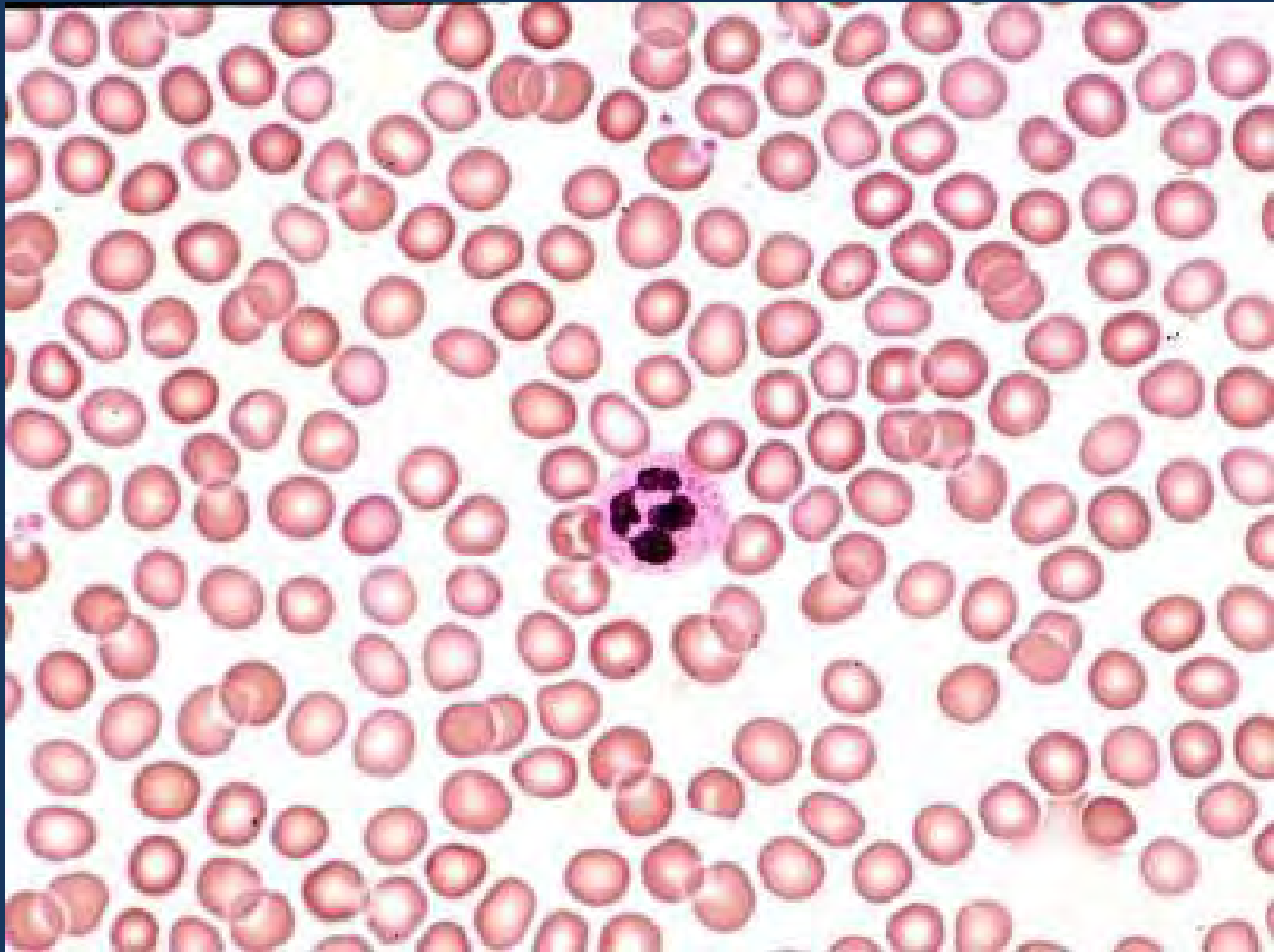


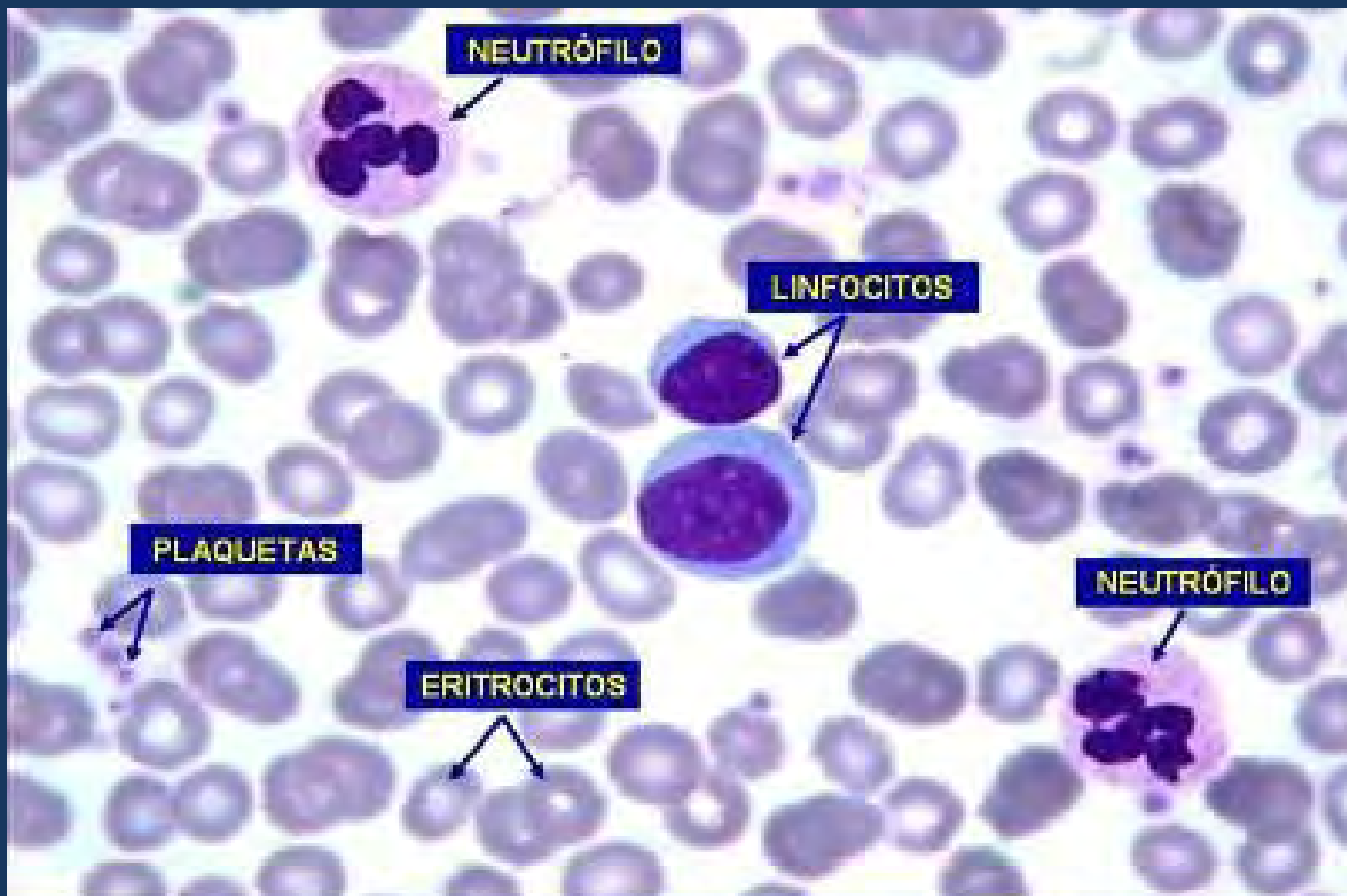
**Frotis de Sangre Humana.
Col. tipo Romanovsky. 1800X.**



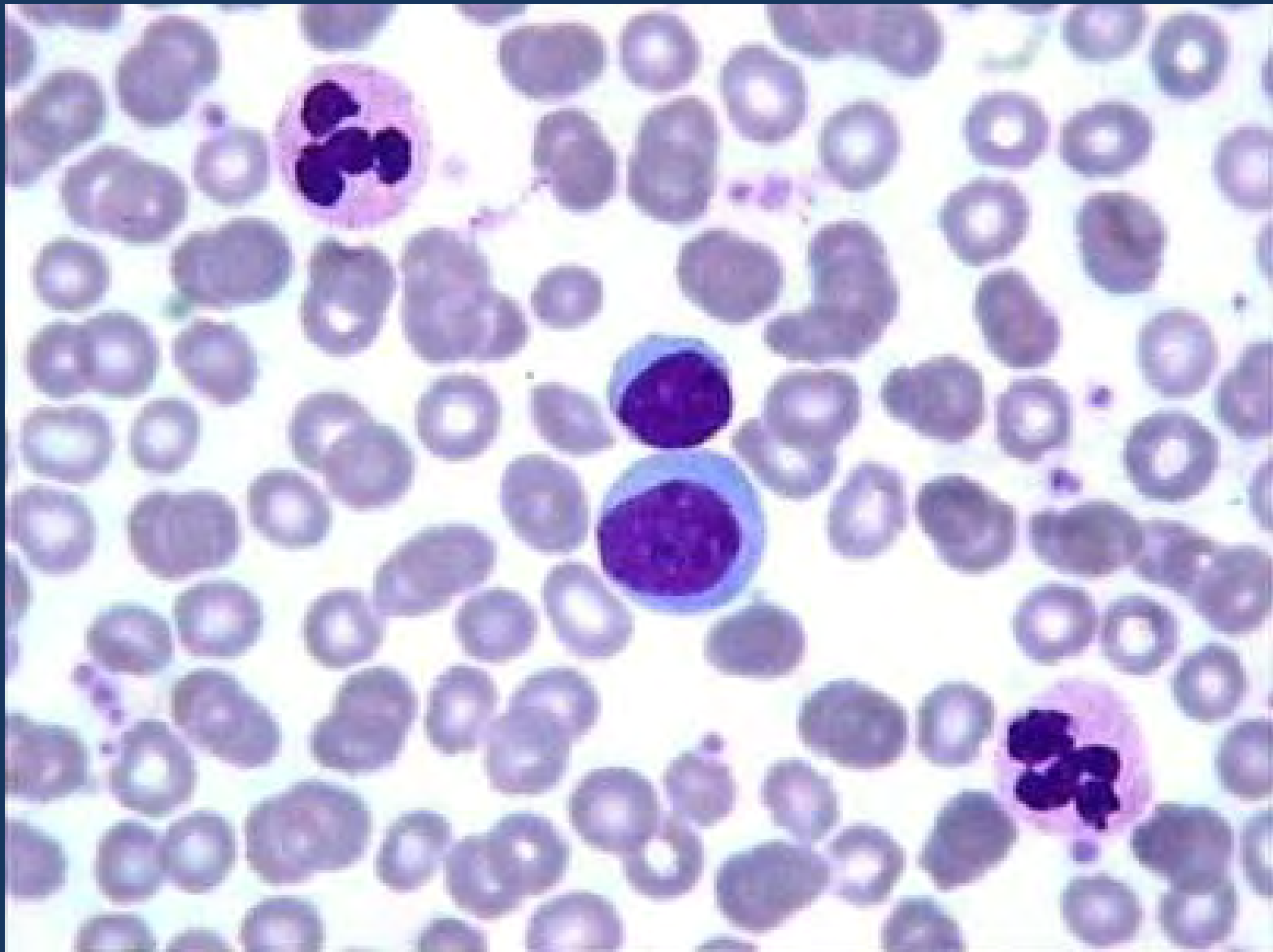


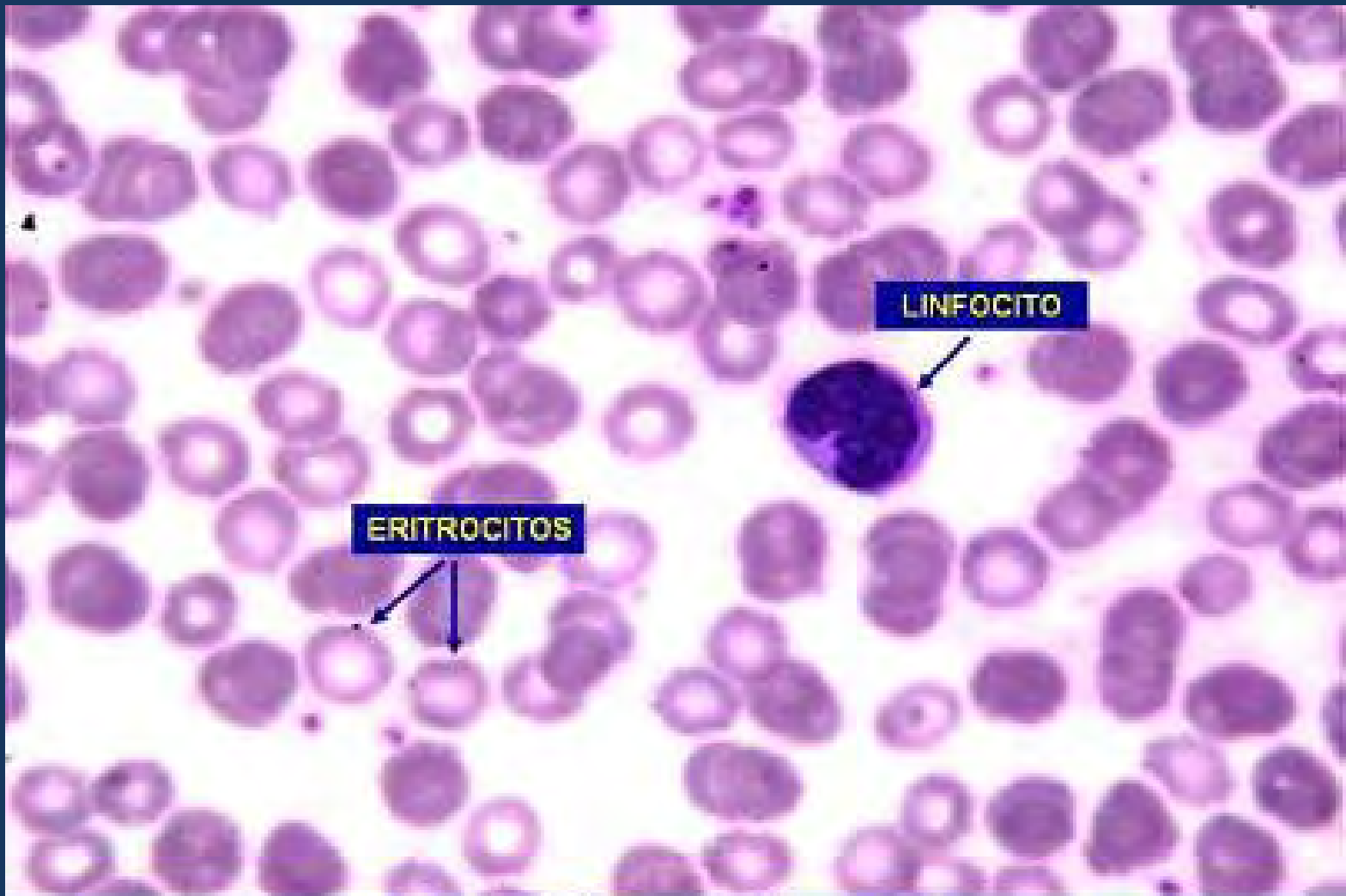
Frotis de Sangre Humana.
Col. tipo Romanovsky. 1800X.



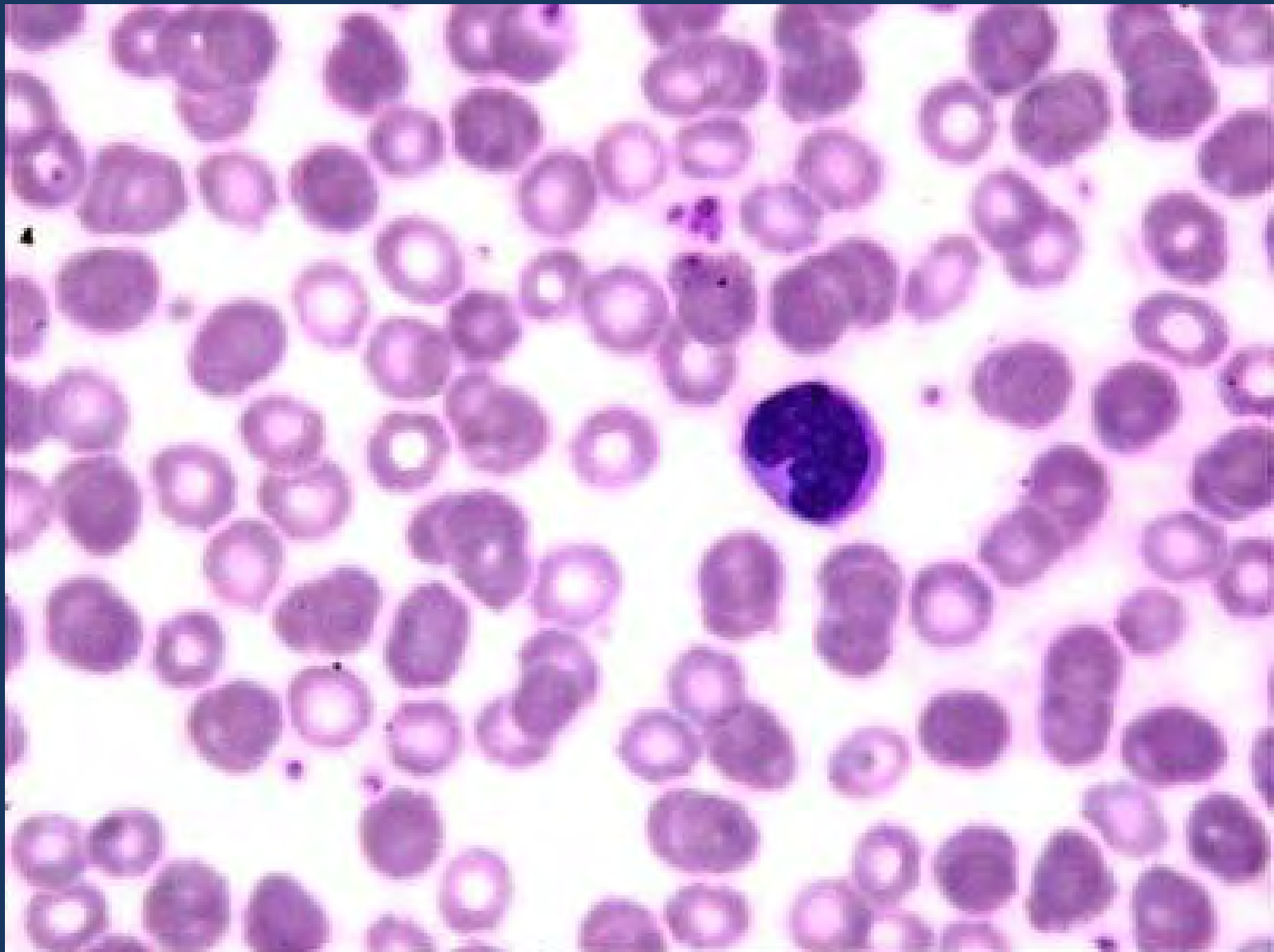


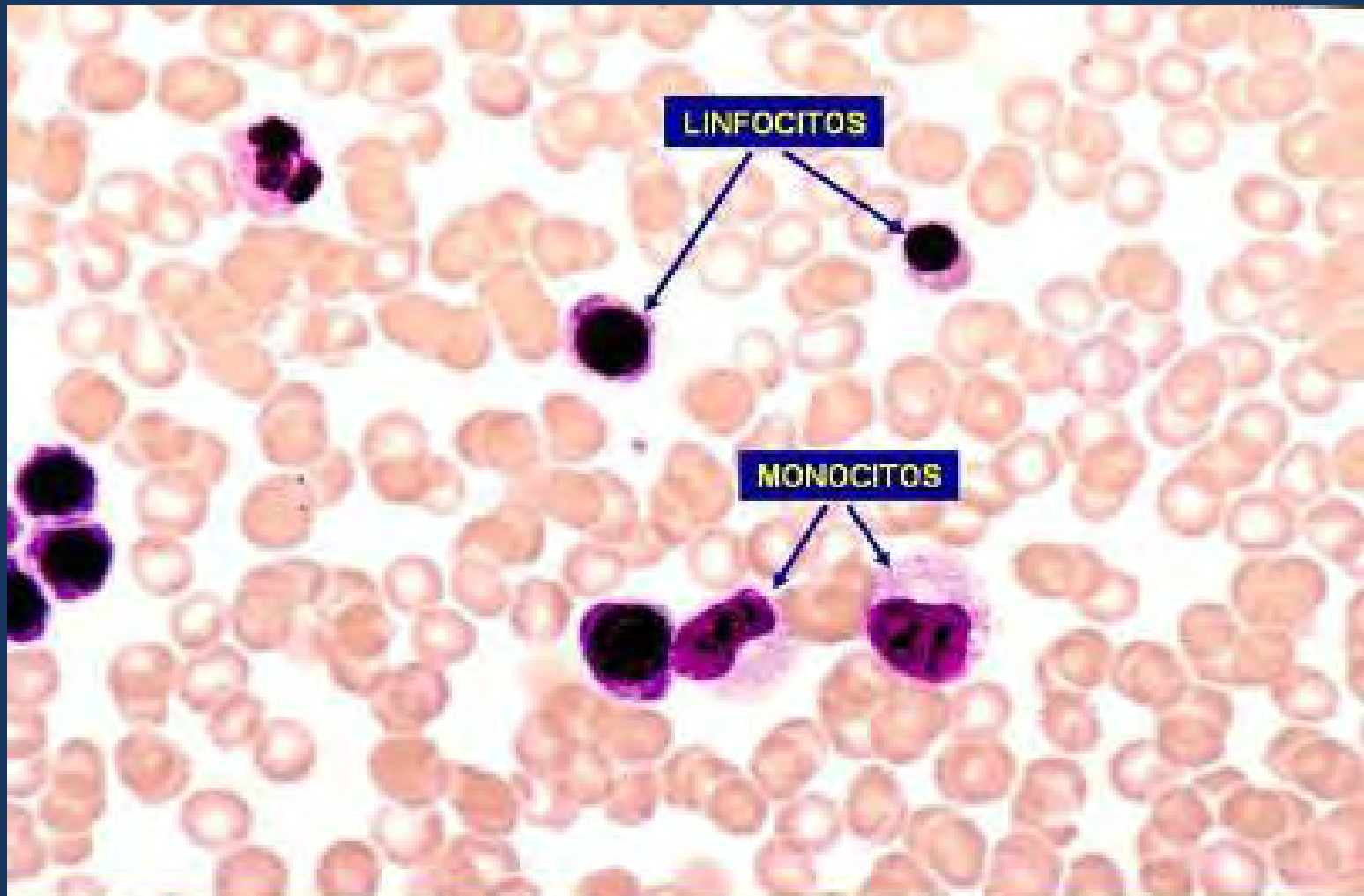
**Frotis de Sangre Humana.
Col. tipo Romanovsky. 2400X.**



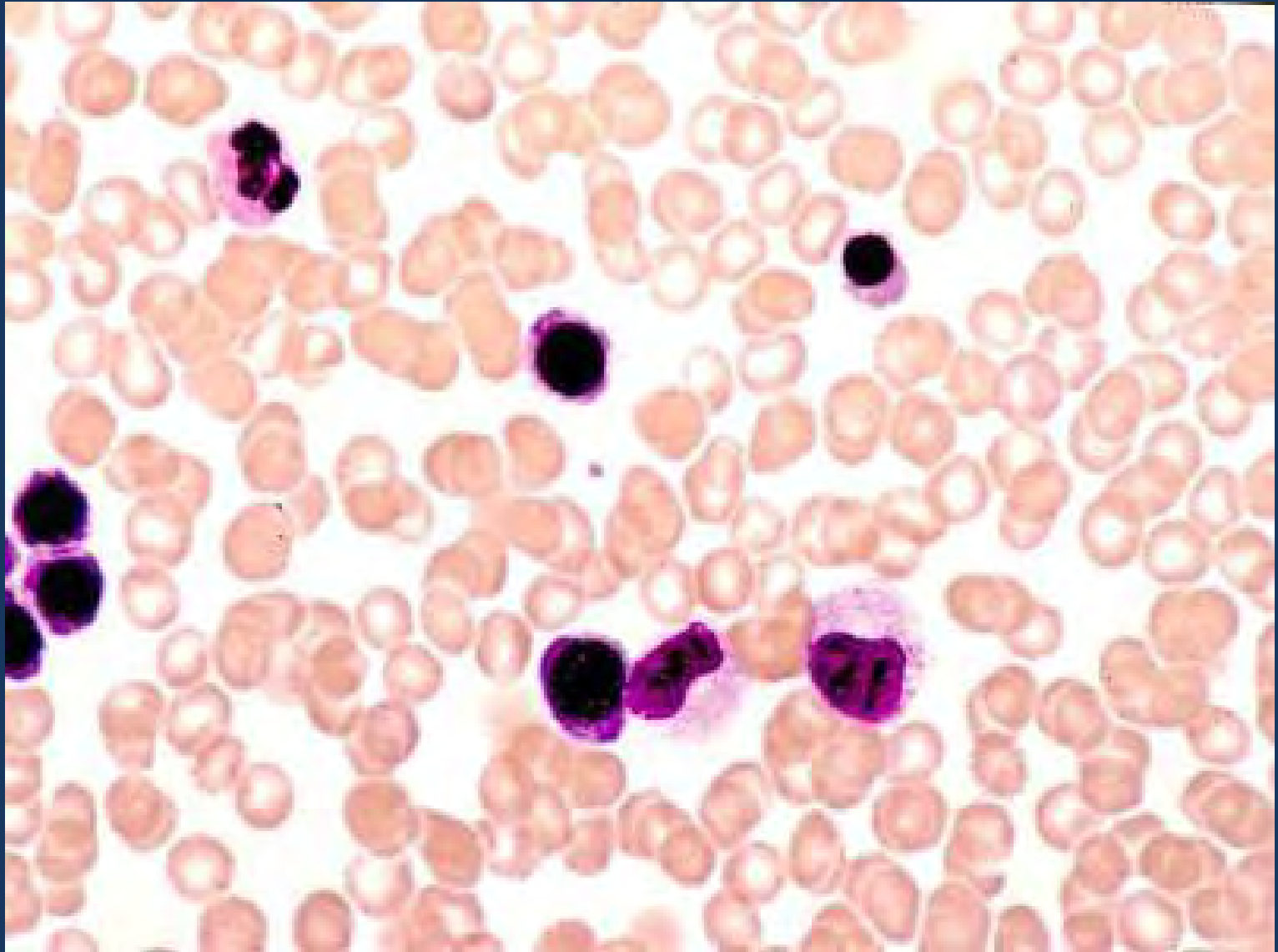


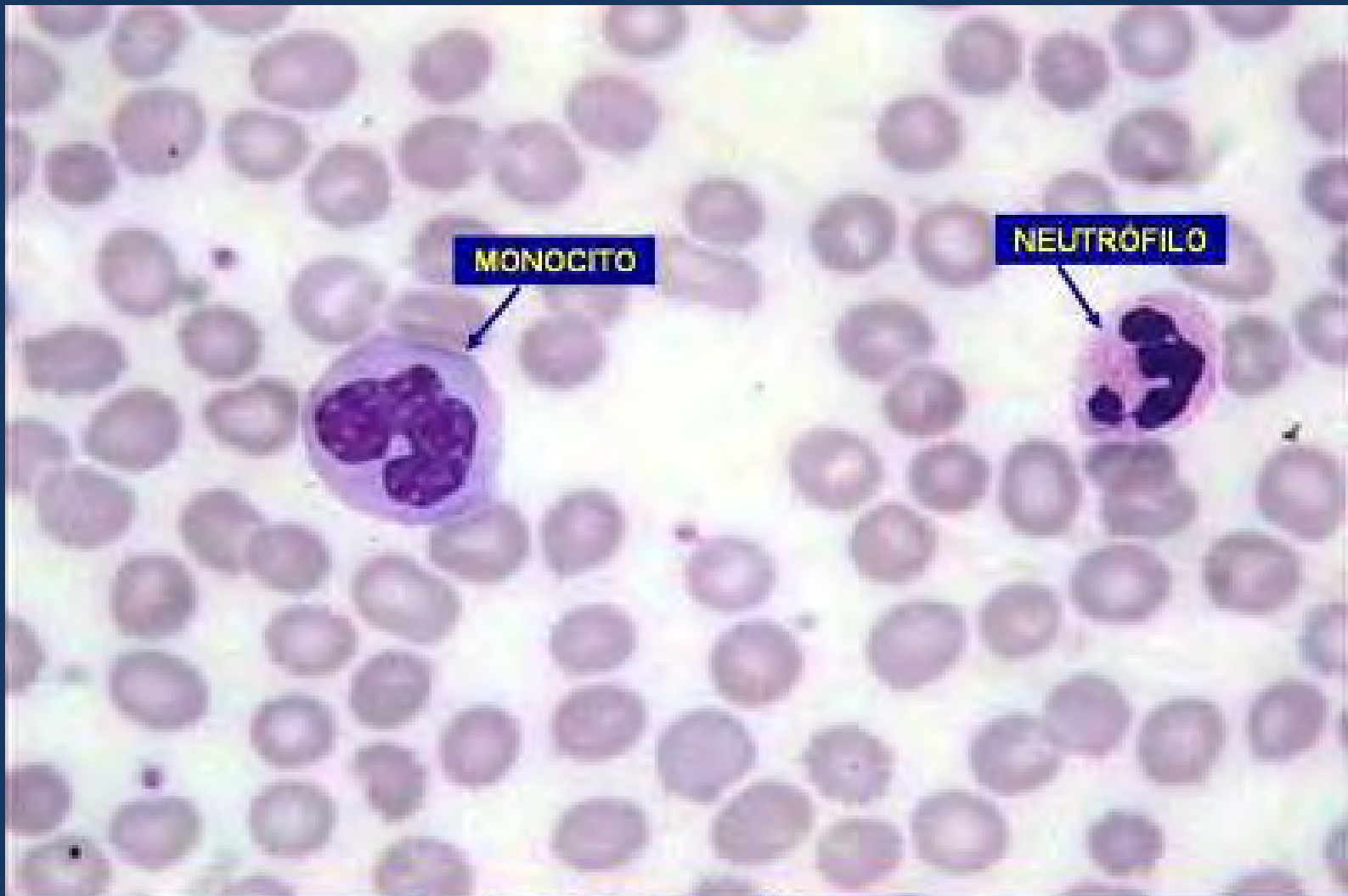
**Frotis de Sangre Humana.
Col. tipo Romanovsky. 2400X.**





**Frotis de Sangre Humana.
Col. tipo Romanovsky. 1800X.**

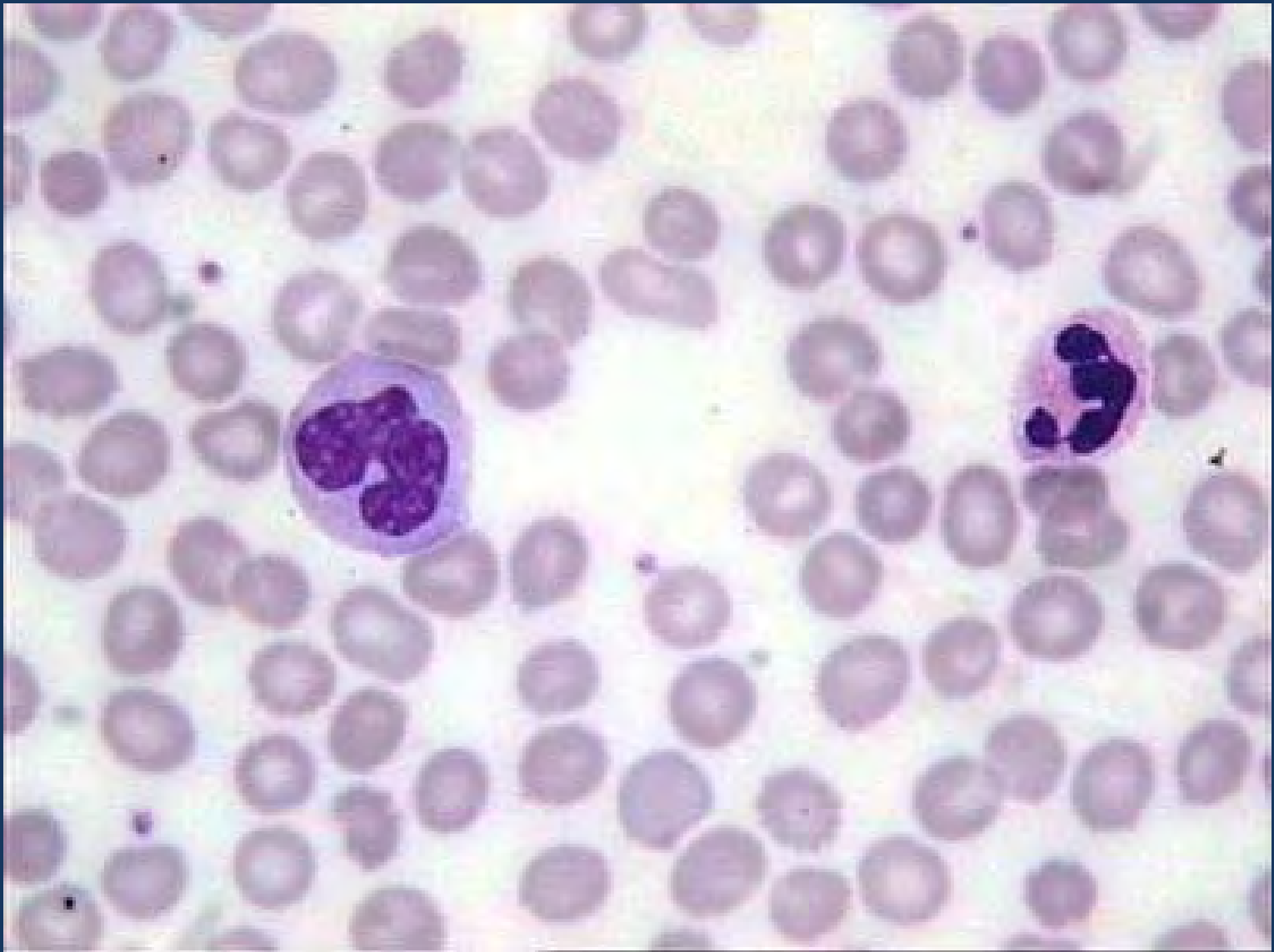


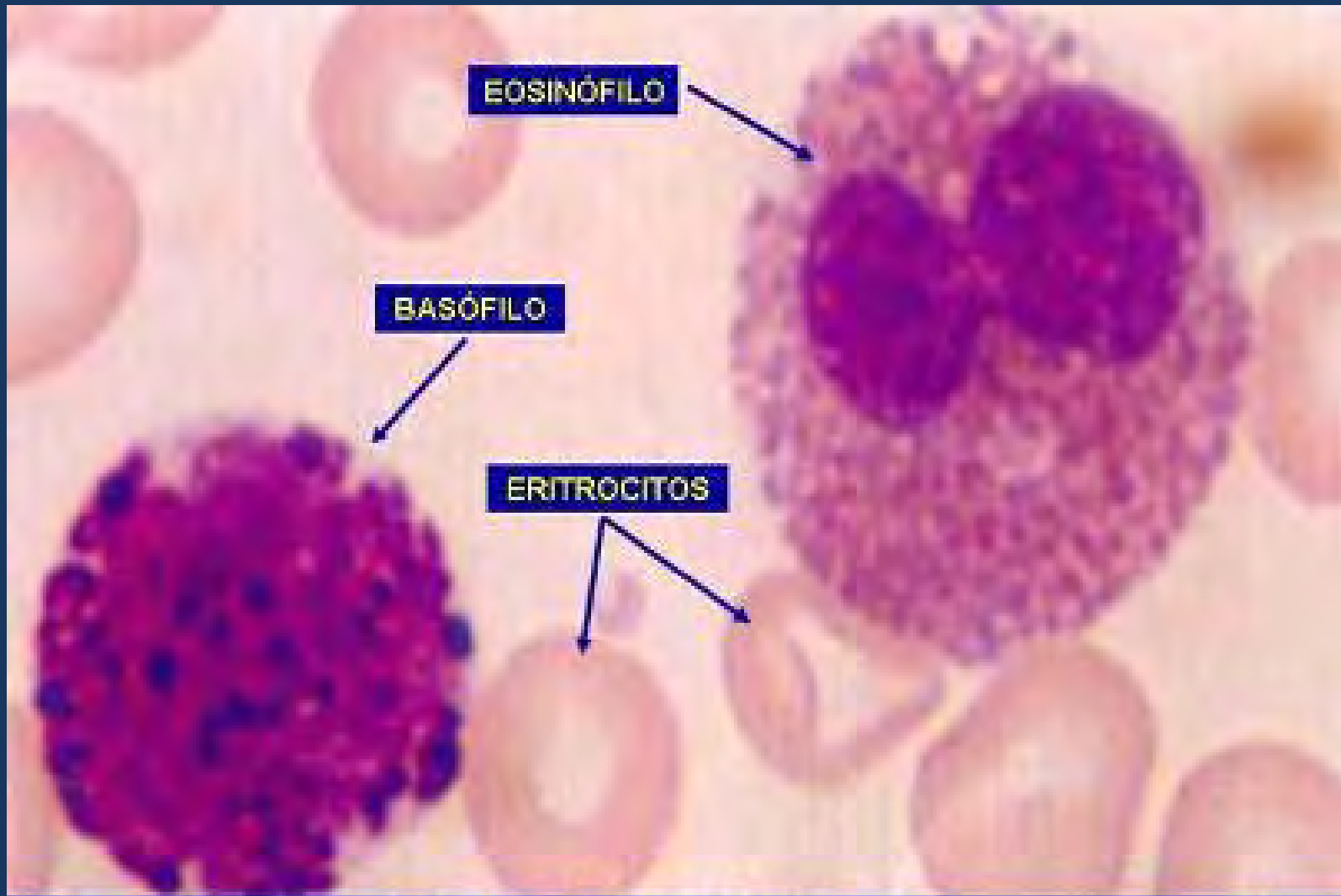


MONOCITO

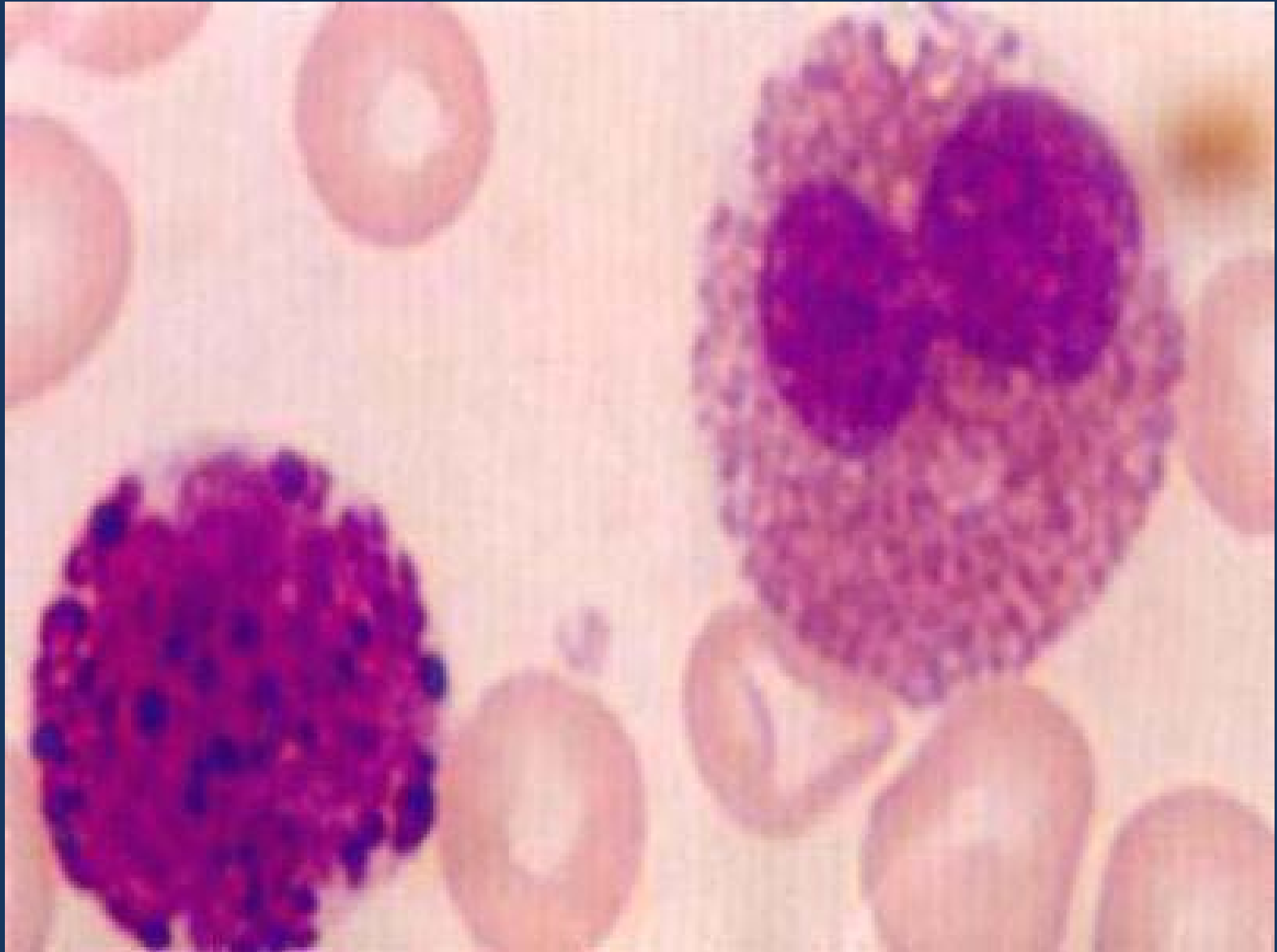
NEUTRÓFILO

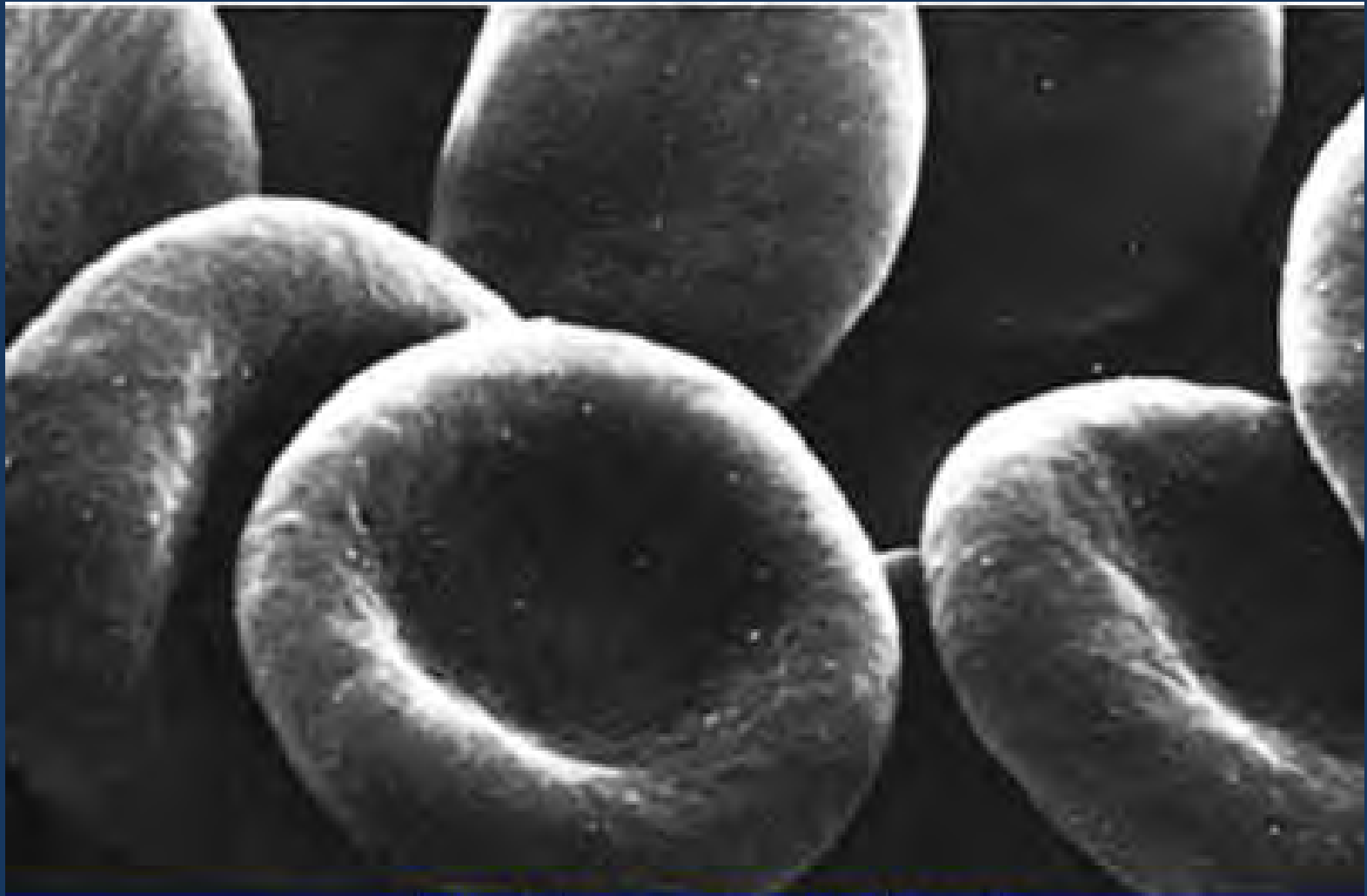
Frotis de Sangre Humana.
Col. tipo Romanovsky. 2400X.



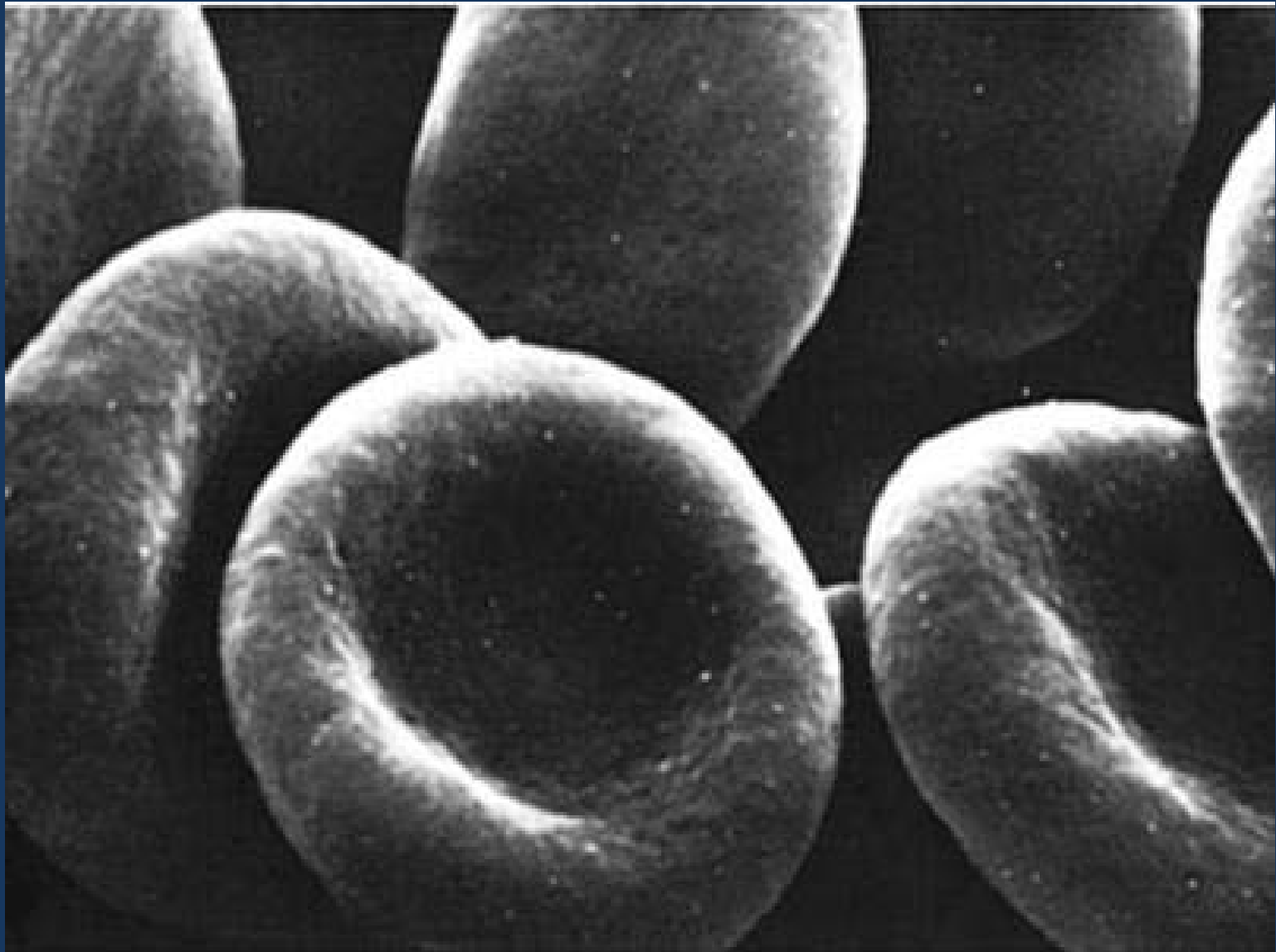


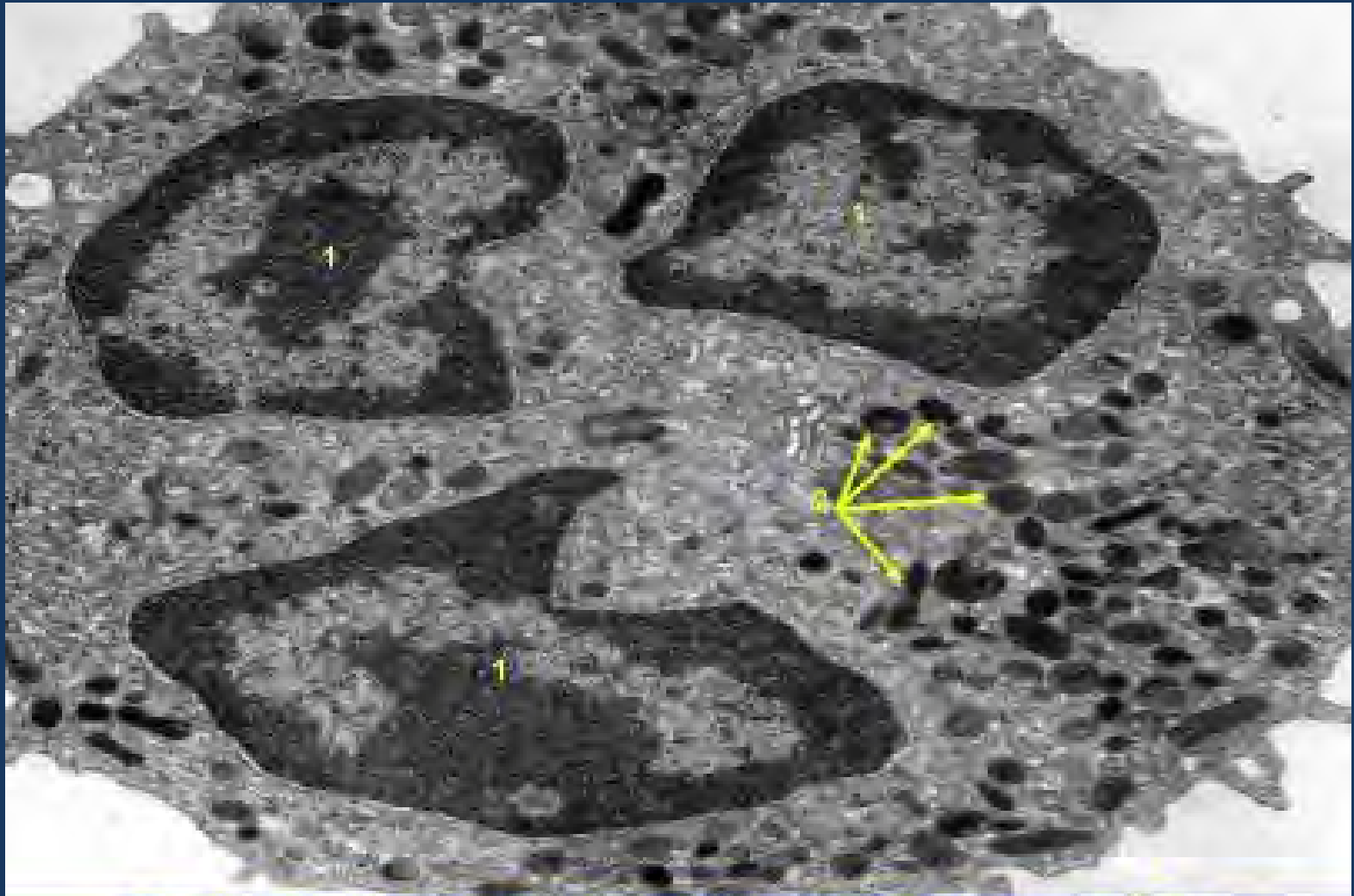
Frotis de Sangre Humana.
Col. Tipo Romanovsky. 5000X.



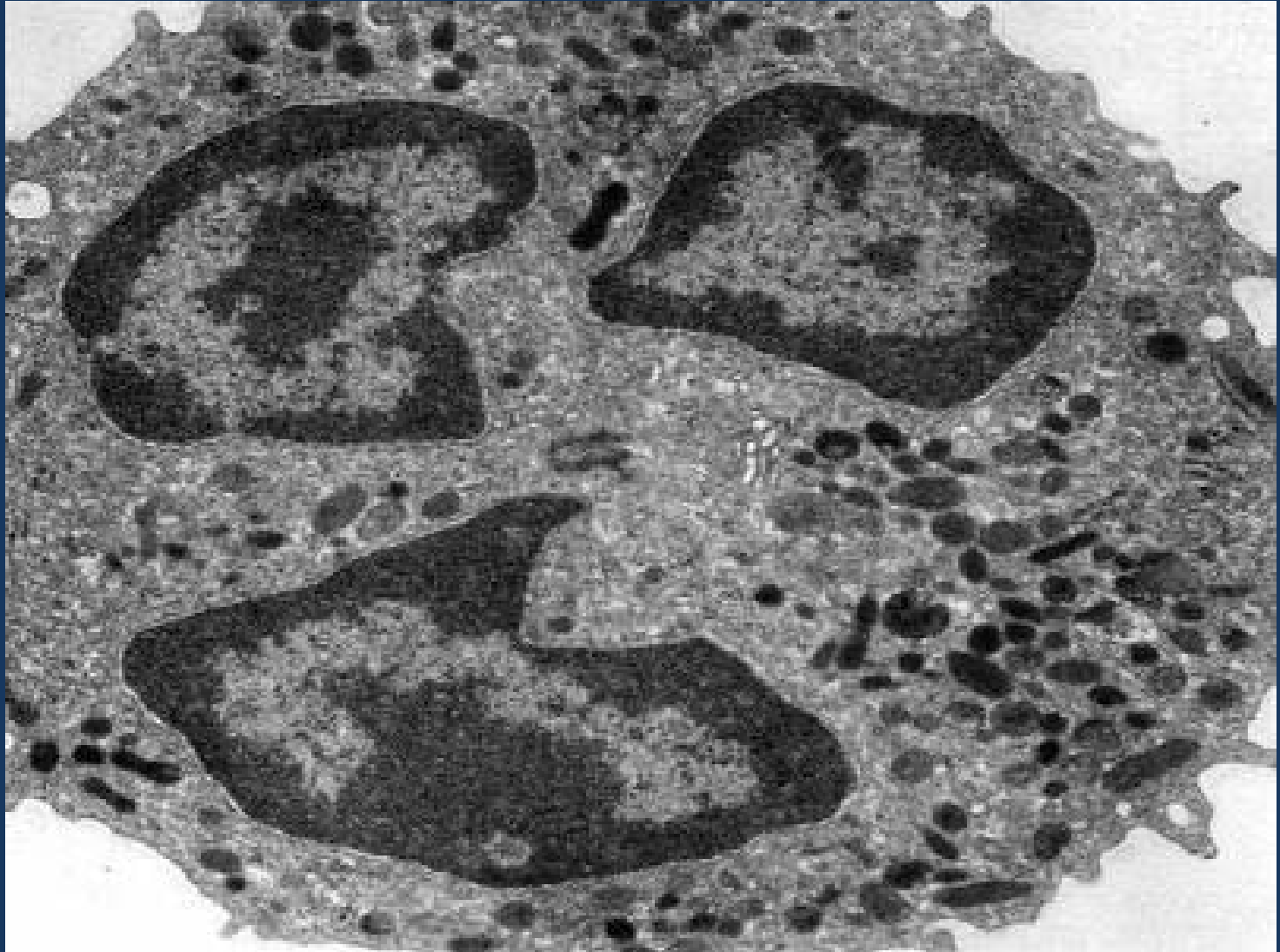


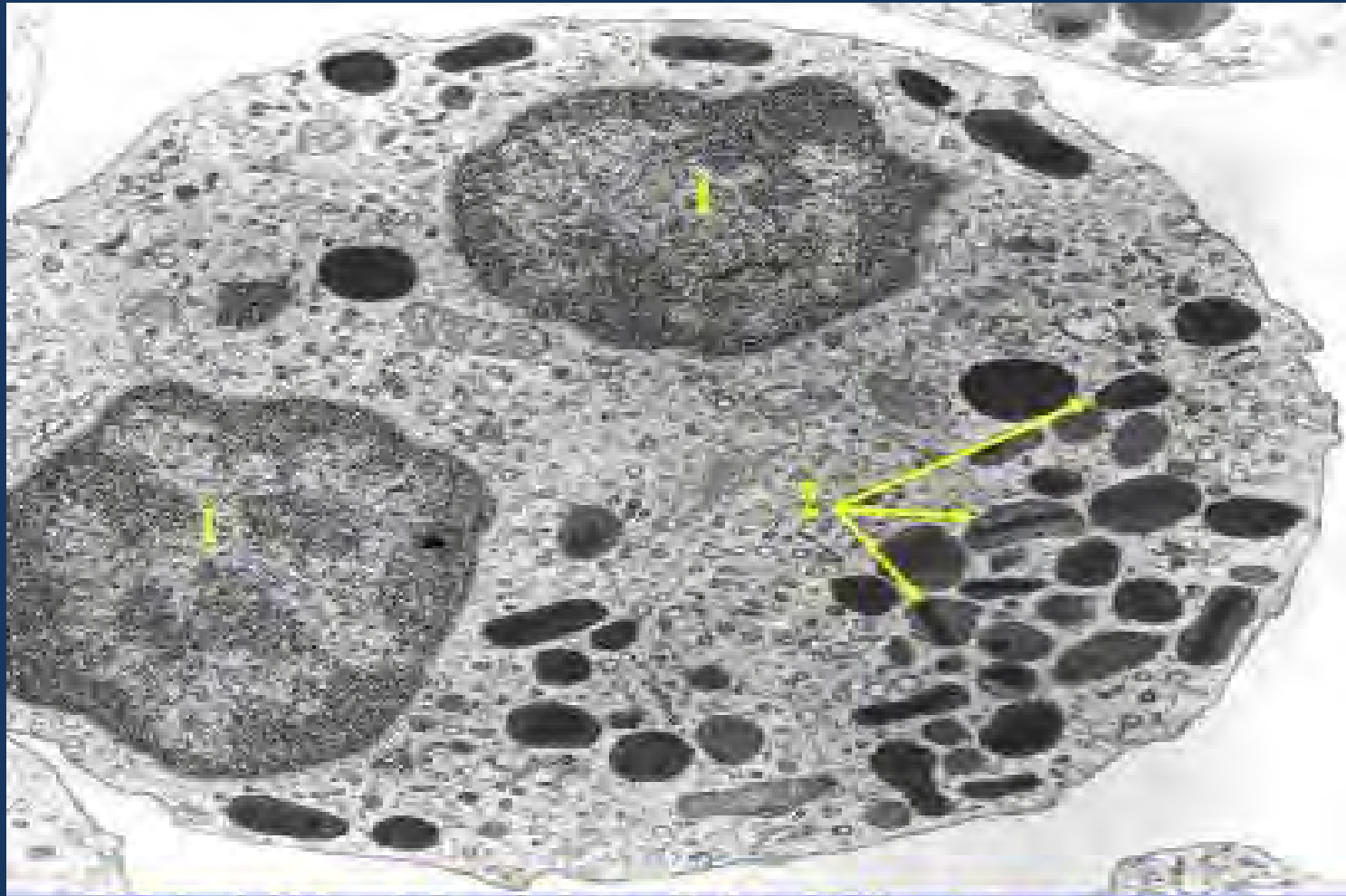
**Eritrocitos. Forma bicóncava.
Fotomicrografía Electrónica de Barrido.**



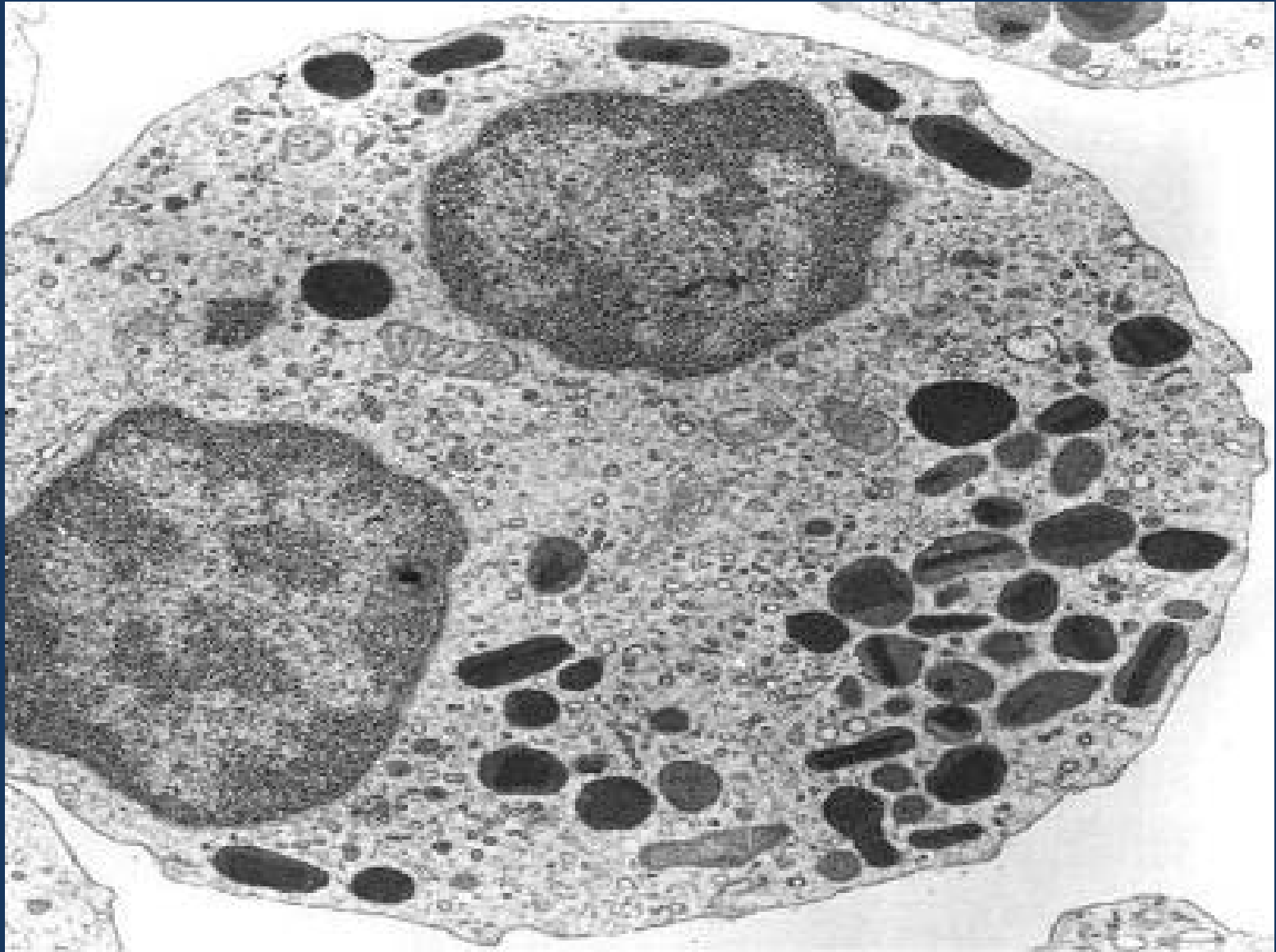


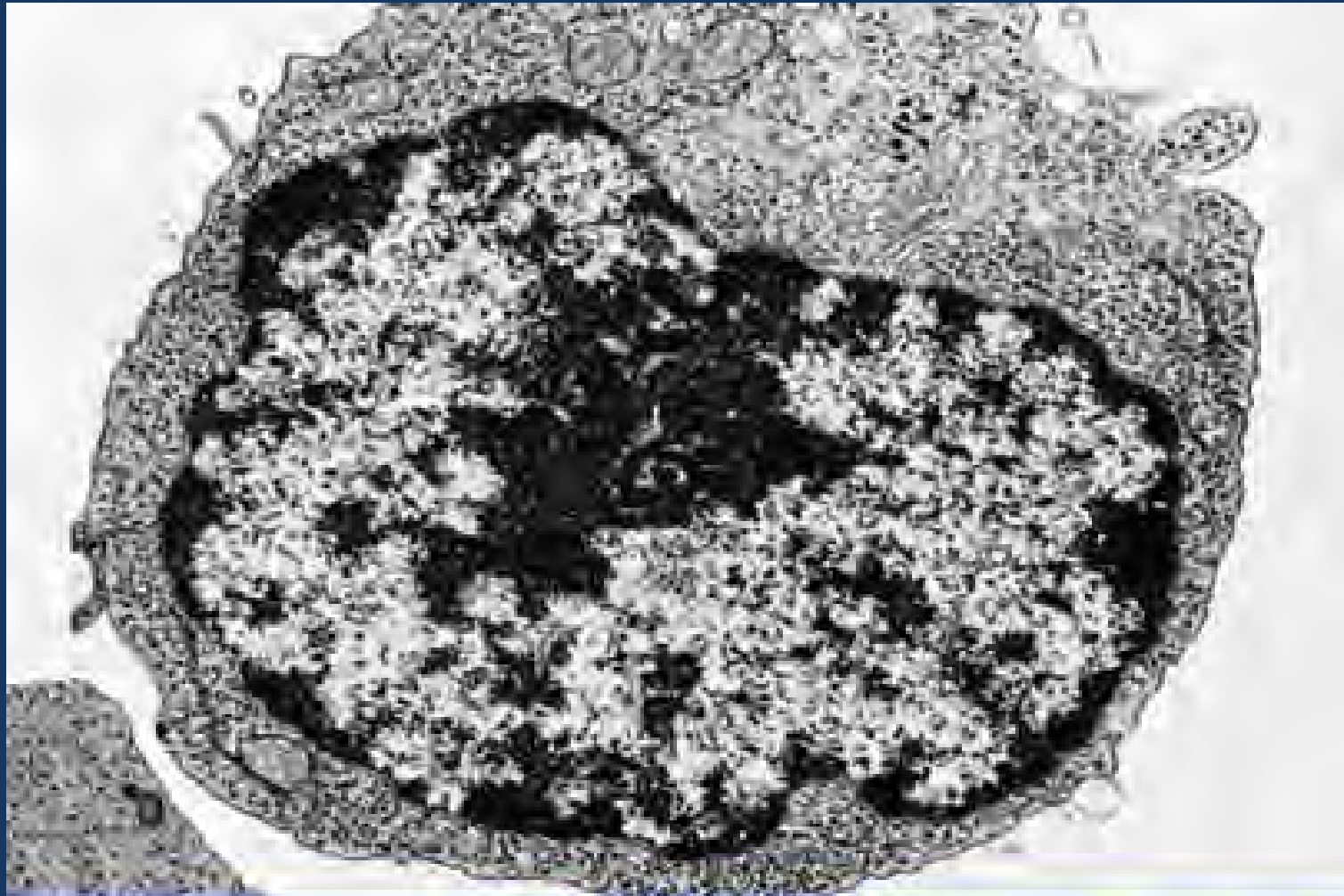
**Neutrófilo. (1) – Núcleo. (2) – Gránulos neutrófilos.
Fotomicrografía Electrónica de Transmisión.**





**Eosinófilo. (1) – Núcleo. (2) – Gránulos neutrófilos.
Fotomicrografía Electrónica de Transmisión.**





Linfocito.

Fotomicrografía Electrónica de Transmisión.

