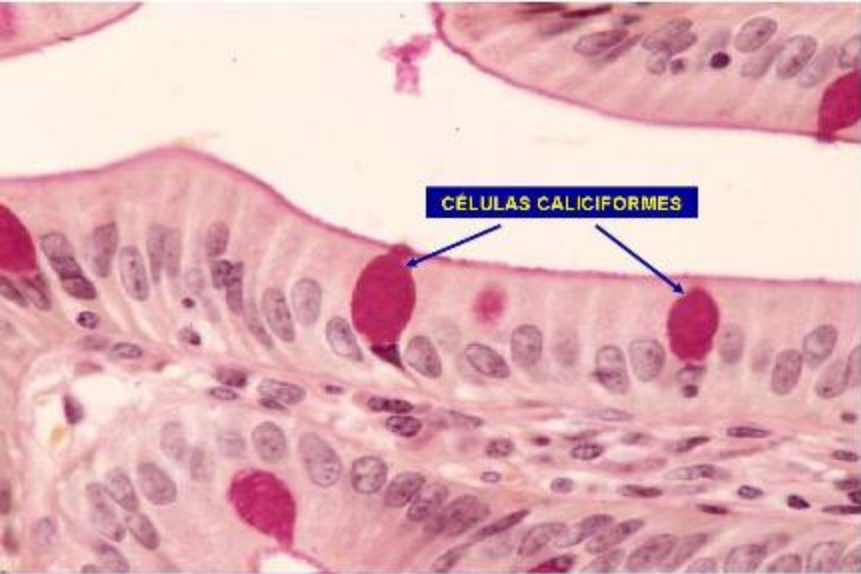
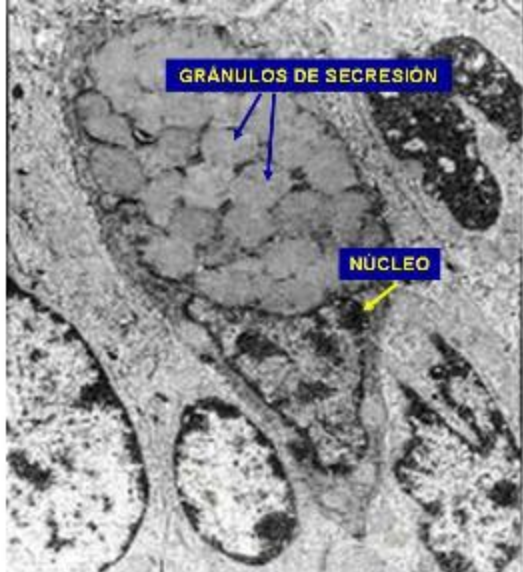


Glándulas

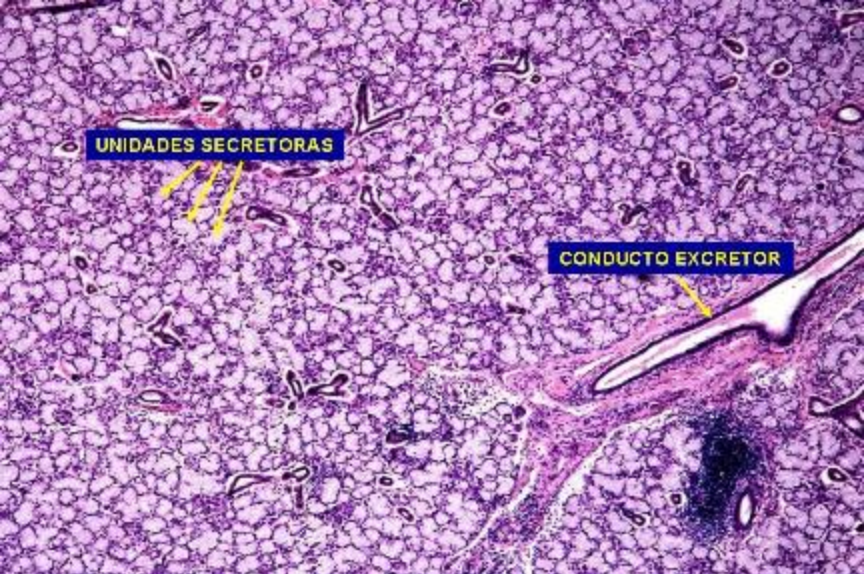


CÉLULAS CALICIFORMES

Tejido epitelial glandular. Glándula exocrina unicelular.
Célula caliciforme. Técnica de PAS. 800X.



**Célula caliciforme. Glándula exocrina unicelular.
Fotomicrografía electrónica de transmisión.**



UNIDADES SECRETORAS

CONDUCTO EXCRETOR

**Epitelio glandular. Glándula exocrina multicelular.
Unidades secretoras. Hematoxilina/Eosina. 100X.**

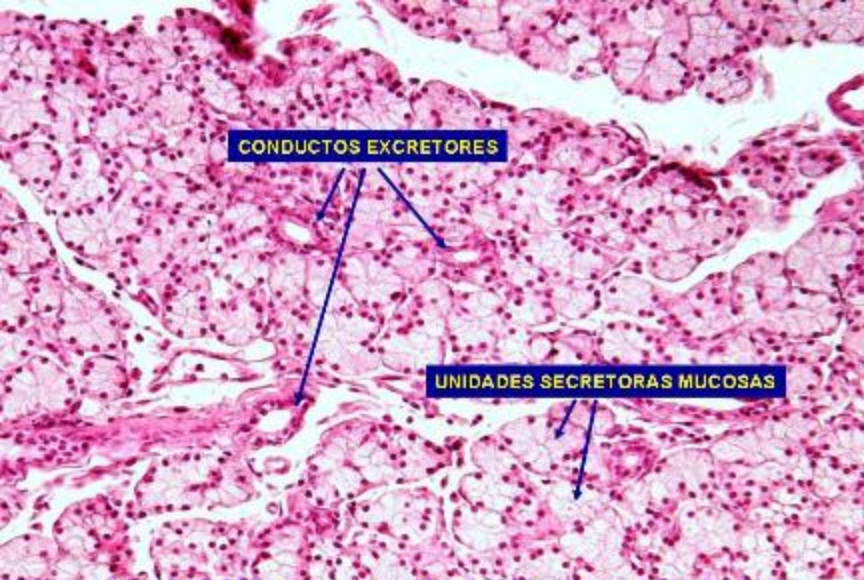


UNIDADES SECRETORAS MUCOSAS

This histological image shows a cross-section of a glandular tissue. The glandular units are arranged in a somewhat organized pattern. On the left, there are several small, rounded secretory units with a foamy or vacuolated appearance, characteristic of mucous cells. These are pointed to by yellow arrows. In the center and right, there are larger, more complex secretory units with a more solid, granular appearance, characteristic of seromucous cells. These are also pointed to by yellow arrows. The overall structure is typical of a mixed salivary gland like the submandibular gland.

UNIDADES SECRETORAS SEROMUCOSAS

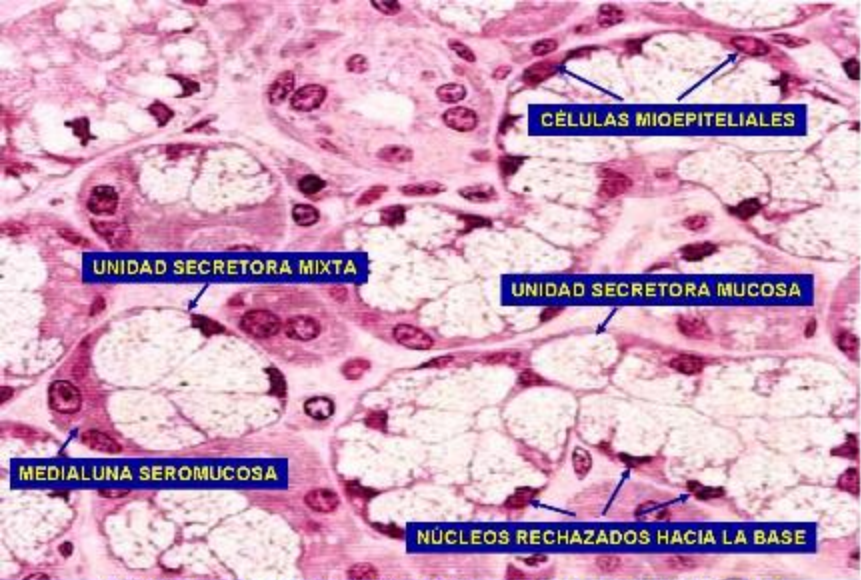
Epitelio glandular. Glándula exocrina multicelular.
Unidades secretoras. Hematoxilina/Eosina. 200X.



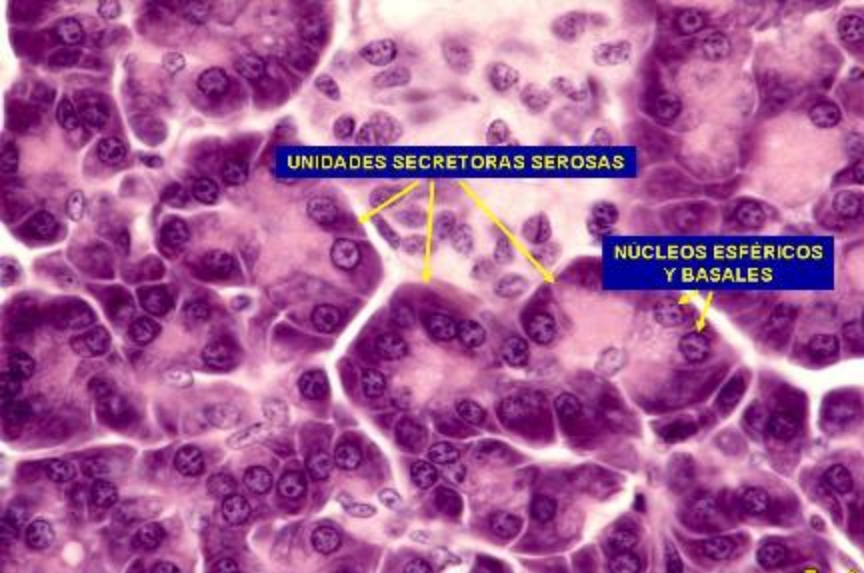
CONDUCTOS EXCRETORES

UNIDADES SECRETORAS MUCOSAS

Epitelio glandular. Glándula exocrina multicelular. Unidades secretoras. Hematoxilina/Eosina. 200X.



Epitelio glandular. Glándula exocrina multicelular. Unidades secretoras. Hematoxilina/Eosina. 400X.



UNIDADES SECRETORAS SEROSAS

**NÚCLEOS ESFÉRICOS
Y BASALES**

**Páncreas. Glándula exocrina acinar compuesta.
Hematoxilina/Eosina. 400X.**



Volver a Web



UNIDADES SECRETORAS MUCOSAS

This histological image shows a cross-section of a glandular tissue. The glandular units are arranged in a somewhat organized pattern. On the left, there are several clusters of cells with a foamy or vacuolated appearance, characteristic of mucous secretory cells. These are labeled with yellow arrows and the text 'UNIDADES SECRETORAS MUCOSAS'. On the right, there are larger, more densely packed clusters of cells with a darker, more granular appearance, characteristic of seromucous secretory cells. These are labeled with yellow arrows and the text 'UNIDADES SECRETORAS SEROMUCOSAS'. The overall structure is typical of a mixed salivary gland like the submandibular gland.

UNIDADES SECRETORAS SEROMUCOSAS

Epitelio glandular. Glándula exocrina multicelular.
Unidades secretoras. Hematoxilina/Eosina. 200X.