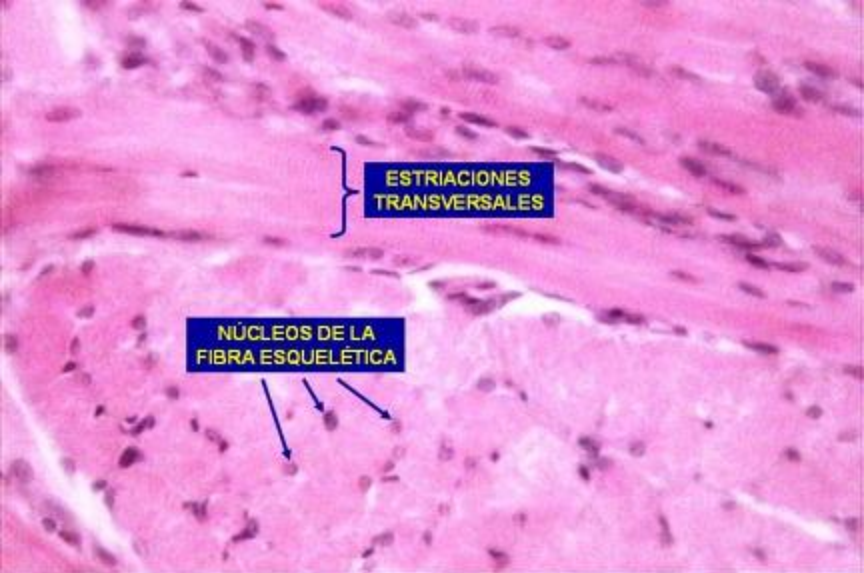


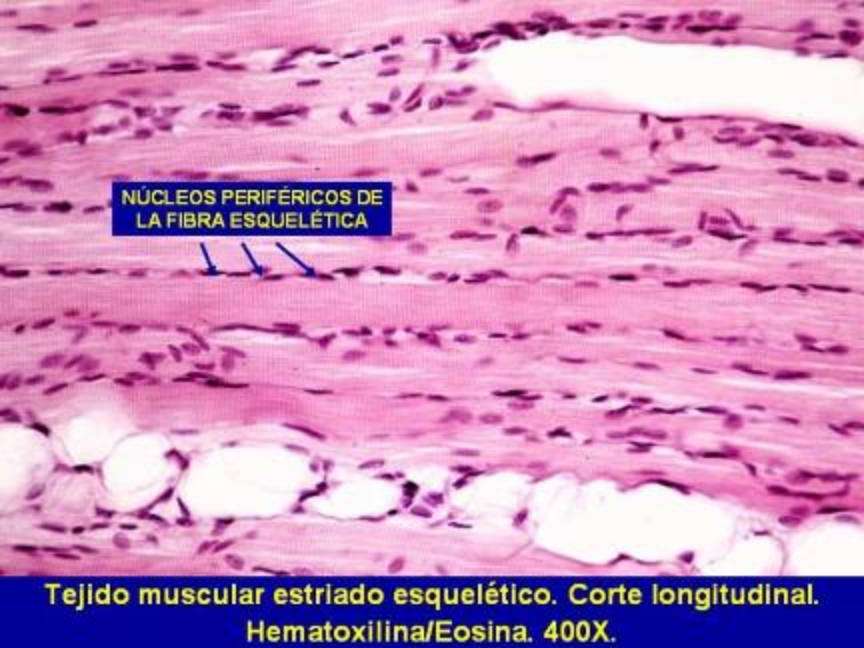
**Lengua. Tejido Muscular estriado esquelético.
Hematoxilina/Eosina. 200X.**



**ESTRIACIONES
TRANSVERSALES**

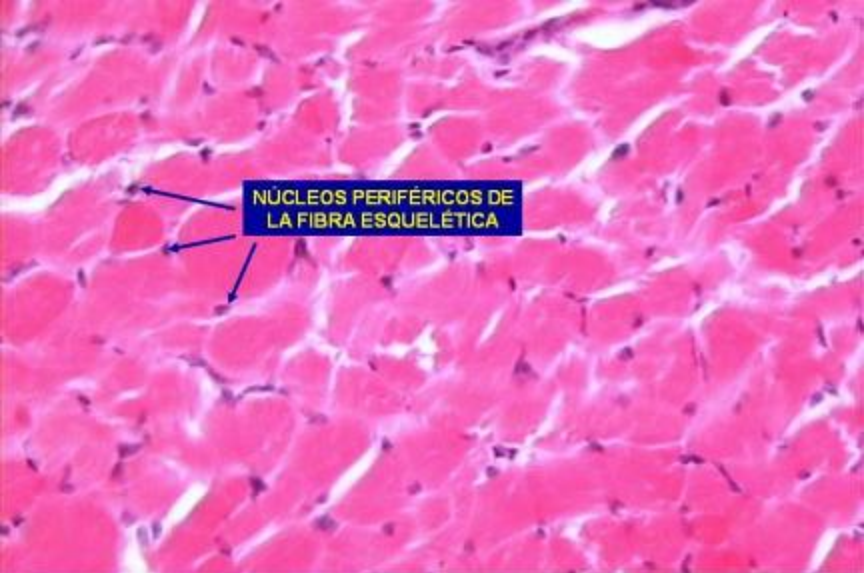
**NÚCLEOS DE LA
FIBRA ESQUELÉTICA**

**Lengua. Tejido muscular estriado esquelético.
Hematoxilina/Eosina. 400X.**

A histological micrograph showing skeletal muscle tissue in a longitudinal section. The muscle fibers are arranged in parallel, showing characteristic striations. The nuclei are located at the periphery of the fibers. A blue box with white text and three blue arrows points to the peripheral nuclei. The tissue is stained with hematoxylin and eosin (H&E).

NÚCLEOS PERIFÉRICOS DE LA FIBRA ESQUELÉTICA

**Tejido muscular estriado esquelético. Corte longitudinal.
Hematoxilina/Eosina. 400X.**



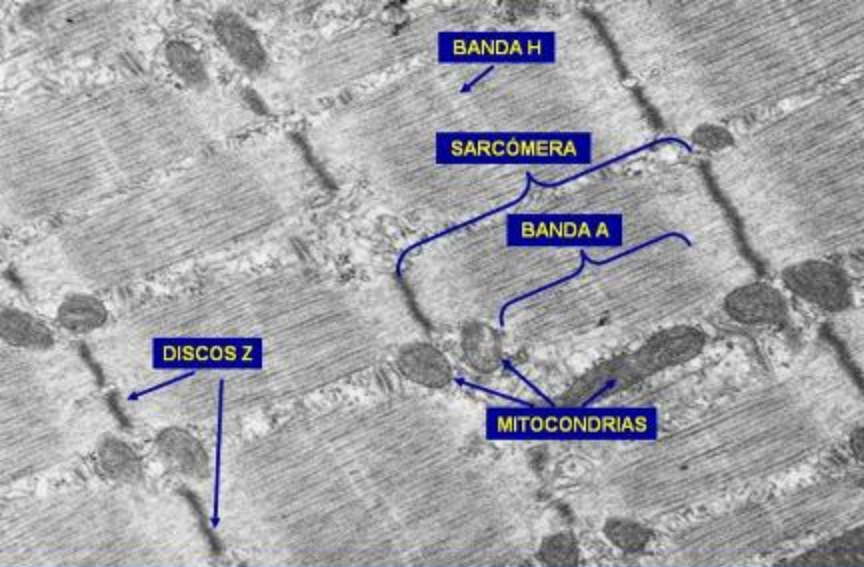
NÚCLEOS PERIFÉRICOS DE LA FIBRA ESQUELÉTICA

**Tejido muscular estriado esquelético. Corte transversal.
Hematoxilina/Eosina. 400X.**

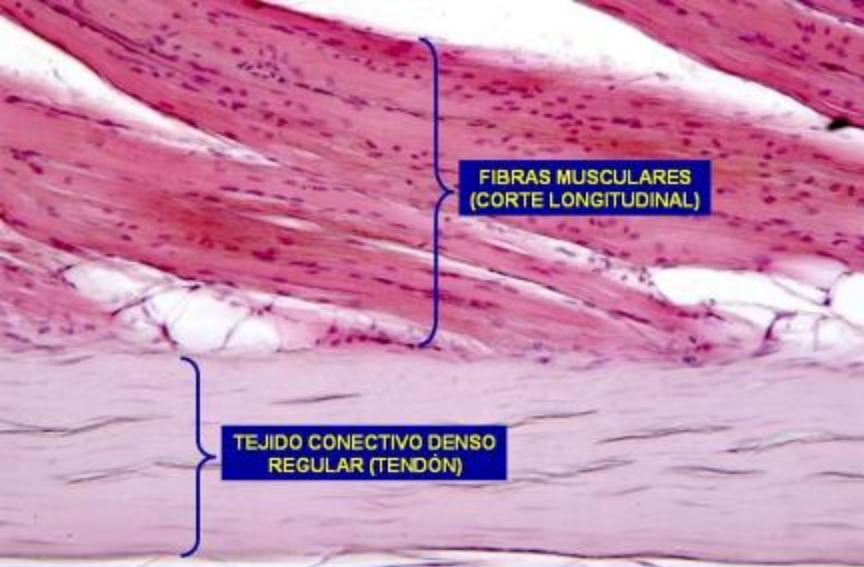
A longitudinal section of skeletal muscle tissue stained with iron-haematoxylin. The image shows multiple muscle fibers with distinct transverse striations. A blue box with yellow text is overlaid on the image, with four blue arrows pointing to the striations in a central muscle fiber.

**ESTRIACIONES TRANSVERSALES DE LA
FIBRA MUSCULAR ESTRIADA ESQUELÉTICA**

**Tejido muscular estriado esquelético. Corte longitudinal.
Hematoxilina férrica. 400X.**



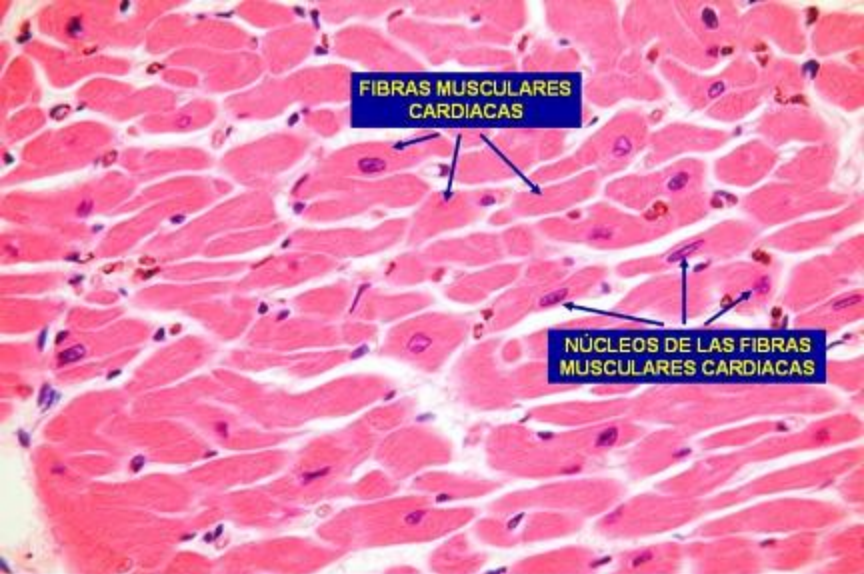
Fotomicrografía electrónica de la fibra muscular estriada esquelética.



FIBRAS MUSCULARES
(CORTE LONGITUDINAL)

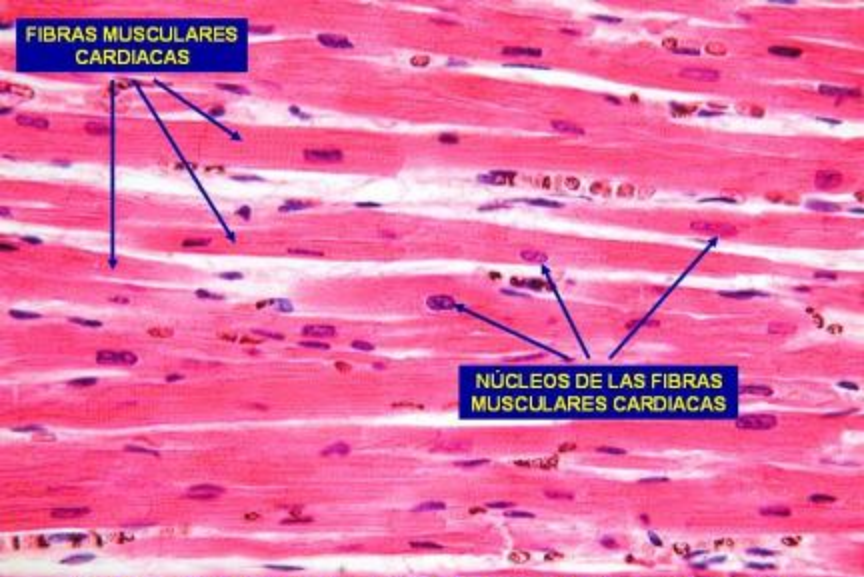
TEJIDO CONECTIVO DENSO
REGULAR (TENDÓN)

Tejido muscular estriado esquelético. Inserción tendinosa.
Hematoxilina/Eosina. 200X.



**Tejido muscular estriado cardiaco. Corte transversal
Hematoxilina/Eosina. 400X.**

**FIBRAS MUSCULARES
CARDIACAS**



**NÚCLEOS DE LAS FIBRAS
MUSCULARES CARDIACAS**

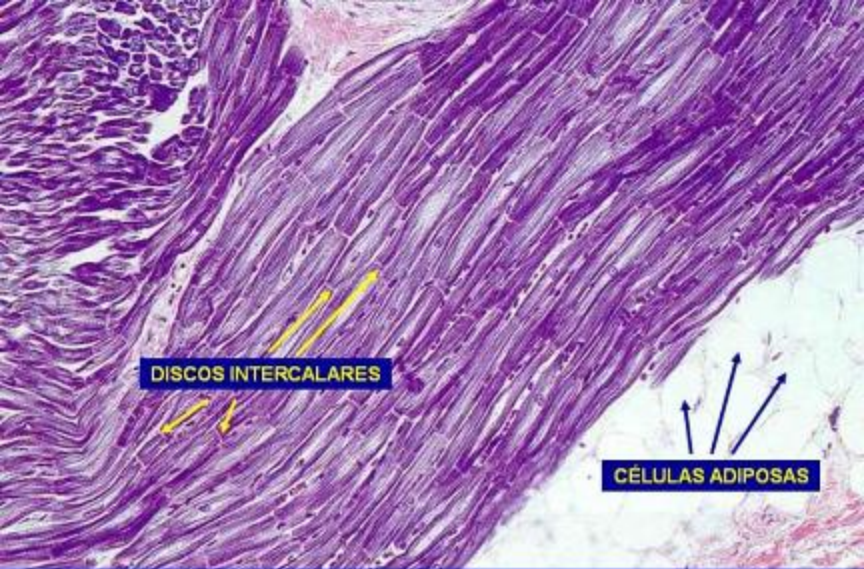
**Tejido muscular estriado cardiaco. Corte longitudinal
Hematoxilina/Eosina. 400X.**



ESTRIACIONES TRANSVERSALES DE LA FIBRA MUSCULAR ESTRIADA CARDIACA

The image shows a longitudinal section of cardiac muscle tissue. The muscle fibers are arranged in parallel, running vertically. Each fiber exhibits a distinct striated pattern, with alternating light and dark bands. The nuclei are visible as small, dark, oval structures within the fibers. A blue box with yellow text is positioned in the upper left, with four blue arrows pointing to the transverse striations in the muscle fibers.

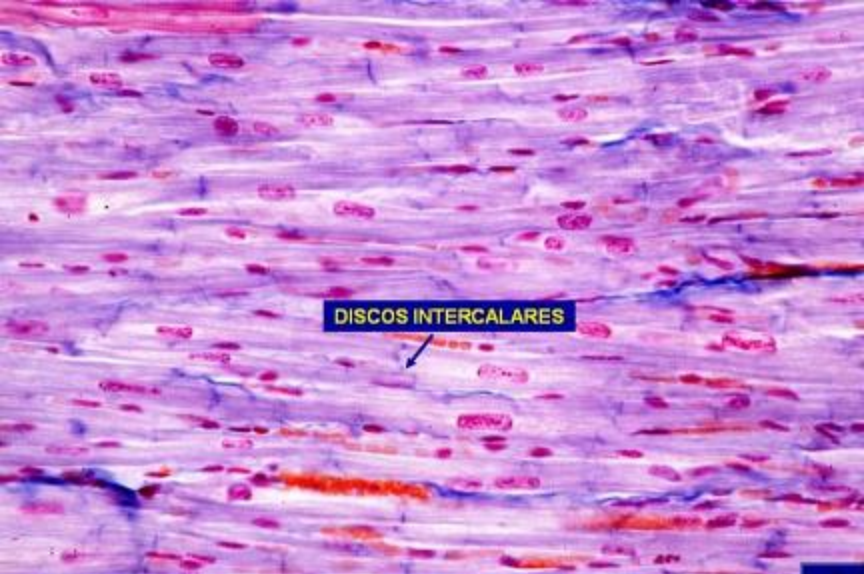
**Tejido muscular estriado cardiaco. Corte longitudinal
Hematoxilina/Eosina. 500X.**



DISCOS INTERCALARES

CÉLULAS ADIPOSAS

**Tejido muscular estriado cardiaco. Corte longitudinal
Hematoxilina fosfotúngstica. 200X.**



DISCOS INTERCALARES

**Tejido muscular estriado cardiaco. Corte longitudinal
Tricrómica de Mallory. 500X.**

[Volver a Web](#)