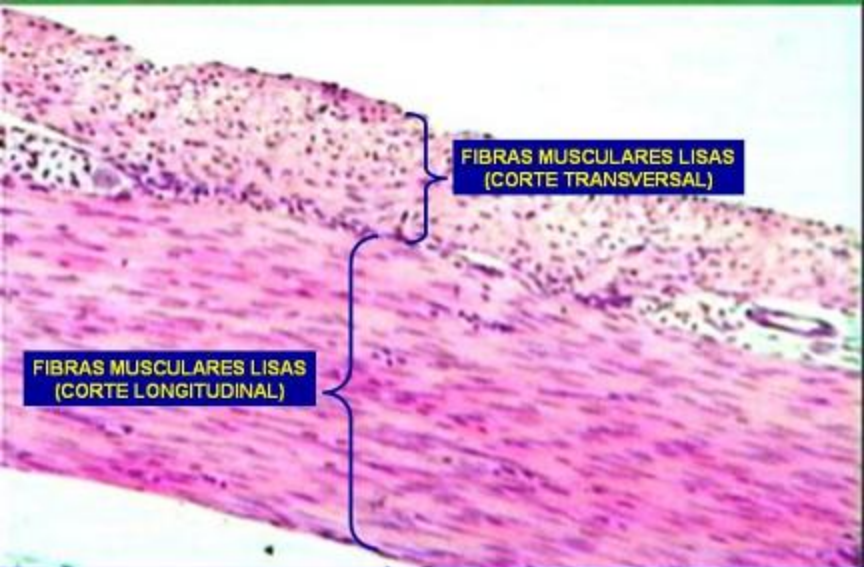


Tejido muscular

Facultad ICBP "Victoria de Girón".
Departamento de Histología



FIBRAS MUSCULARES LISAS
(CORTE TRANSVERSAL)

FIBRAS MUSCULARES LISAS
(CORTE LONGITUDINAL)

**Tejido Muscular. Músculo liso.
Hematoxilina/Eosina. 200X.**



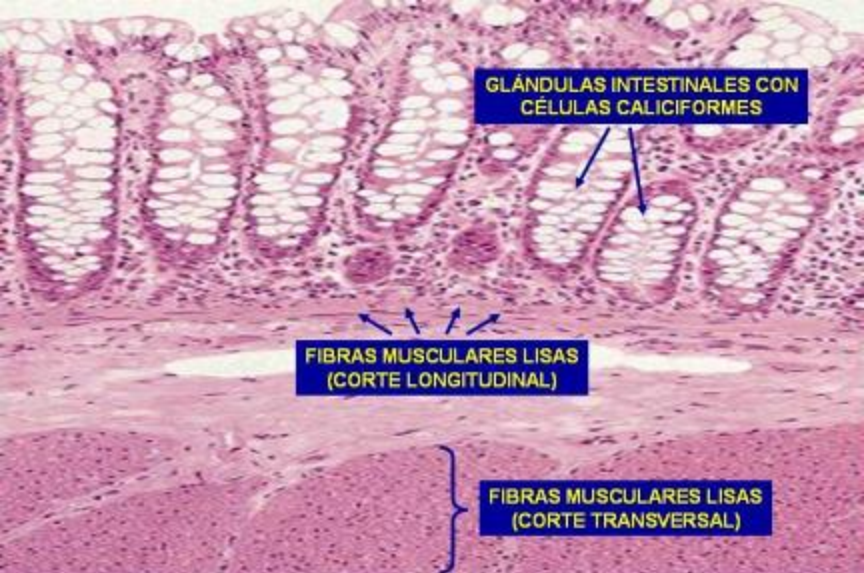
FIBRAS MUSCULARES LISAS
(CORTE TRANSVERSAL)



NÚCLEOS DE LAS CÉLULAS
MUSCULARES LISAS

FIBRAS MUSCULARES LISAS
(CORTE LONGITUDINAL)

**Tejido Muscular. Músculo liso.
Hematoxilina/Eosina. 400X.**

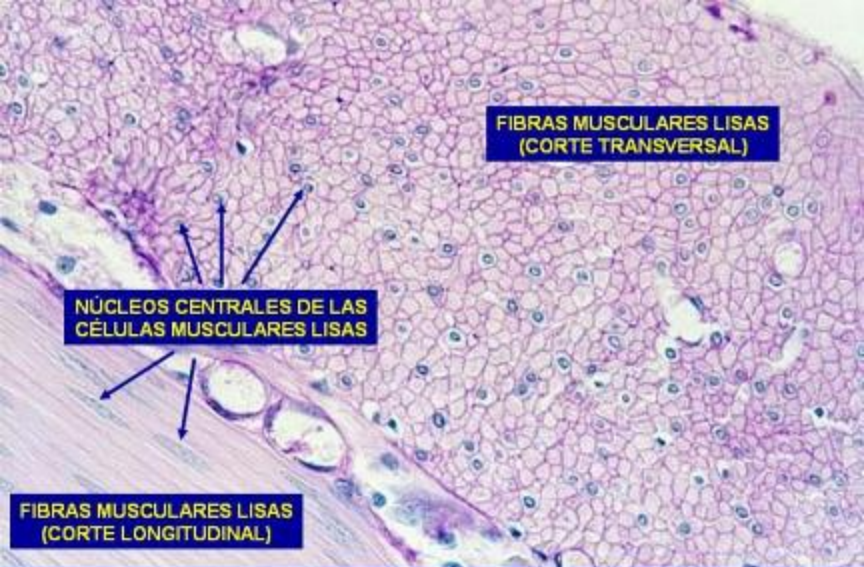


**GLÁNDULAS INTESTINALES CON
CÉLULAS CALICIFORMES**

**FIBRAS MUSCULARES LISAS
(CORTE LONGITUDINAL)**

**FIBRAS MUSCULARES LISAS
(CORTE TRANSVERSAL)**

**Intestino grueso. Tejido Muscular liso.
Hematoxilina/Eosina. 100X.**



**FIBRAS MUSCULARES LISAS
(CORTE TRANSVERSAL)**

**NÚCLEOS CENTRALES DE LAS
CÉLULAS MUSCULARES LISAS**

**FIBRAS MUSCULARES LISAS
(CORTE LONGITUDINAL)**

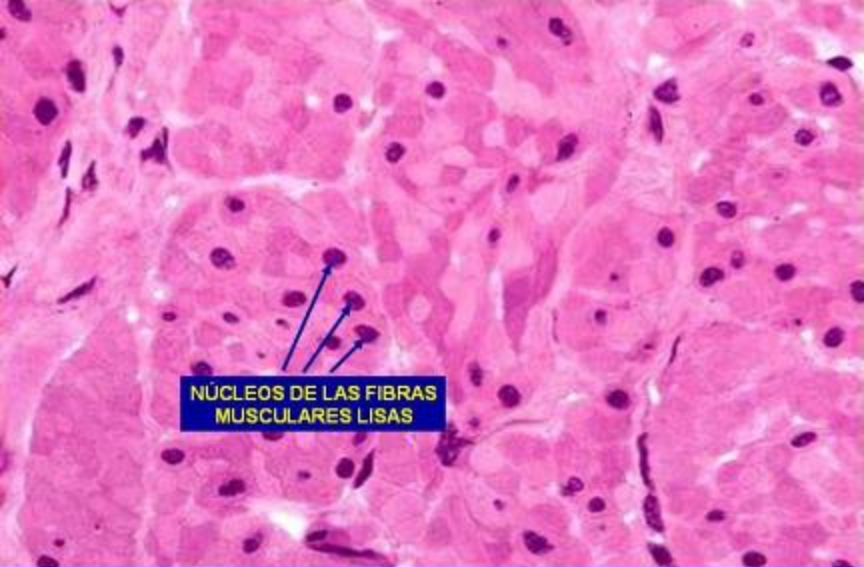
**Tejido Muscular. Músculo liso.
PAS/Hematoxilina. 400X.**



NÚCLEOS DE LAS FIBRAS
MUSCULARES LISAS

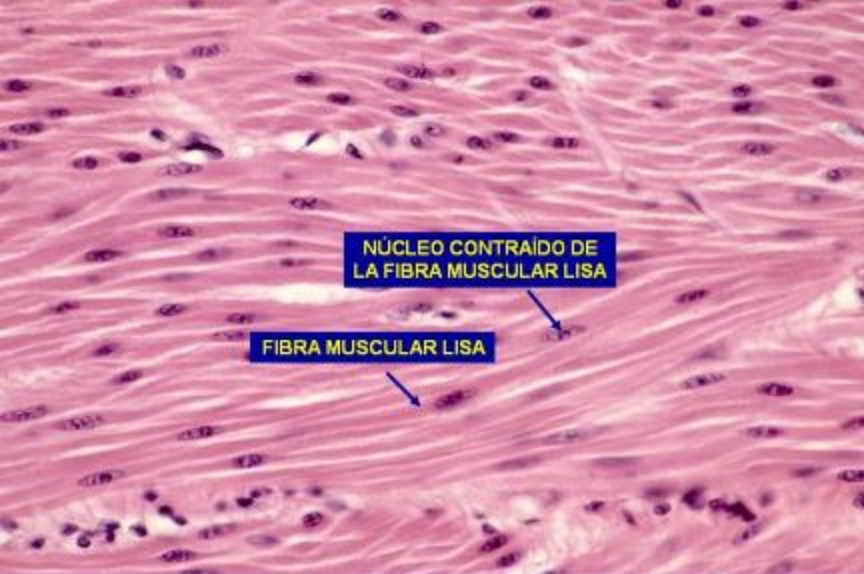
The image is a light micrograph of smooth muscle tissue stained with hematoxylin and eosin (H&E). It shows numerous elongated, spindle-shaped smooth muscle fibers arranged in a somewhat parallel fashion. The nuclei are stained dark purple and are located peripherally within the fibers. A central blue box with white text contains the label 'NÚCLEOS DE LAS FIBRAS MUSCULARES LISAS', with three black arrows pointing to three specific nuclei in the middle of the field.

Tejido Muscular. Músculo liso corte longitudinal.
Hematoxilina/Eosina. 500X.



**NÚCLEOS DE LAS FIBRAS
MUSCULARES LISAS**

**Tejido Muscular. Músculo liso corte transversal.
Hematoxilina/Eosina. 500X.**



**NÚCLEO CONTRAÍDO DE
LA FIBRA MUSCULAR LISA**

FIBRA MUSCULAR LISA

**Tejido Muscular Liso. Corte longitudinal.
Hematoxilina/Eosina. 400X.**