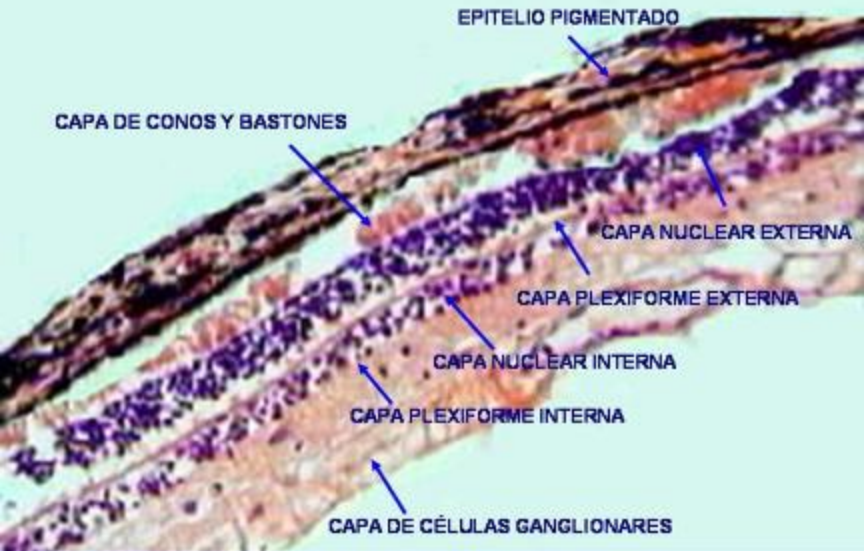
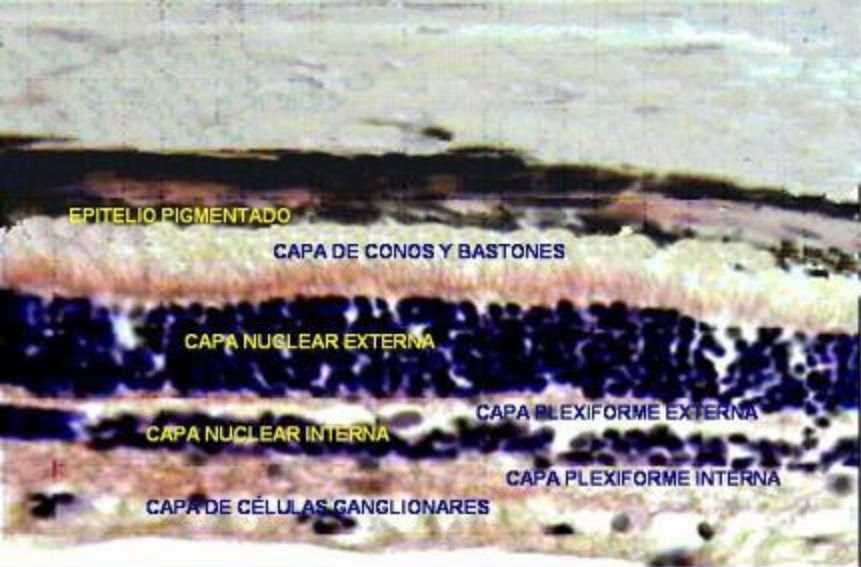


RETINA

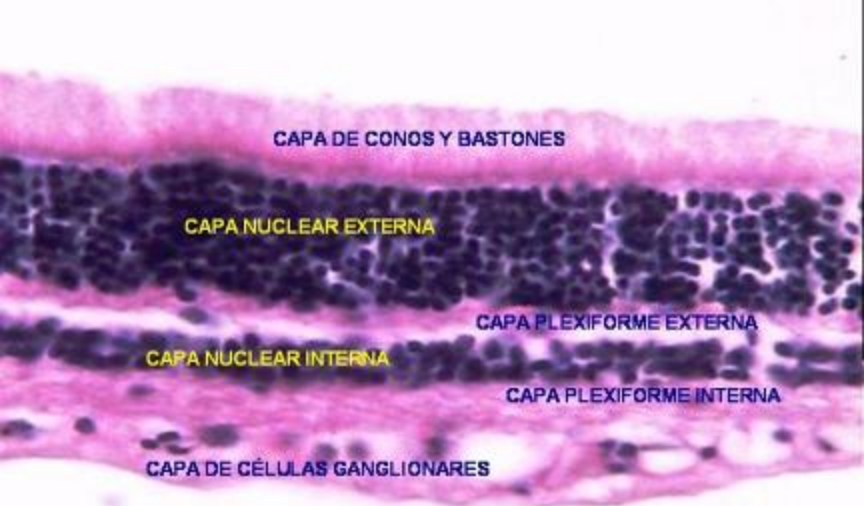
Ojo. Retina.
Hematoxilina/Eosina. 40X.



Ojo. Retina.
Hematoxilina/Eosina. 100X.



Ojo. Retina.
Hematoxilina/Eosina. 250X.



CAPA DE CONOS Y BASTONES

CAPA NUCLEAR EXTERNA

CAPA PLEXIFORME EXTERNA

CAPA NUCLEAR INTERNA

CAPA PLEXIFORME INTERNA

CAPA DE CÉLULAS GANGLIONARES

Ojo. Retina.
Hematoxilina/Eosina. 250X.



CAPA MOLECULAR

The image is a histological micrograph of the cerebellar cortex stained with hematoxylin and eosin (H&E). It shows a clear laminar organization. At the top is the molecular layer (CAPA MOLECULAR), which is relatively clear with scattered fibers. Below it is the layer of Purkinje cells (NEURONAS DE PURKINJE), where several large, multipolar neurons with prominent nuclei and nucleoli are visible. The bottom layer is the granular layer (CAPA GRANULOSA), which is densely packed with small, dark-staining granule cells. Arrows point from the label 'NEURONAS DE PURKINJE' to three of these large neurons.

NEURONAS DE PURKINJE

CAPA GRANULOSA

Corteza cerebelosa.
Hematoxilina/Eosina. 400X.

[Volver a Web](#)