

# Sistema nervioso

A microscopic image of brain tissue stained with cresyl-violet luxol fast blue. The image shows a clear boundary between the white matter (Sustancia Blanca) on the left and the gray matter (Sustancia Gris) on the right. The white matter contains myelinated axons, while the gray matter contains a higher density of neurons and their cell bodies. The staining highlights the nuclei in purple and the myelin sheaths in blue.

SUSTANCIA GRIS

SUSTANCIA BLANCA

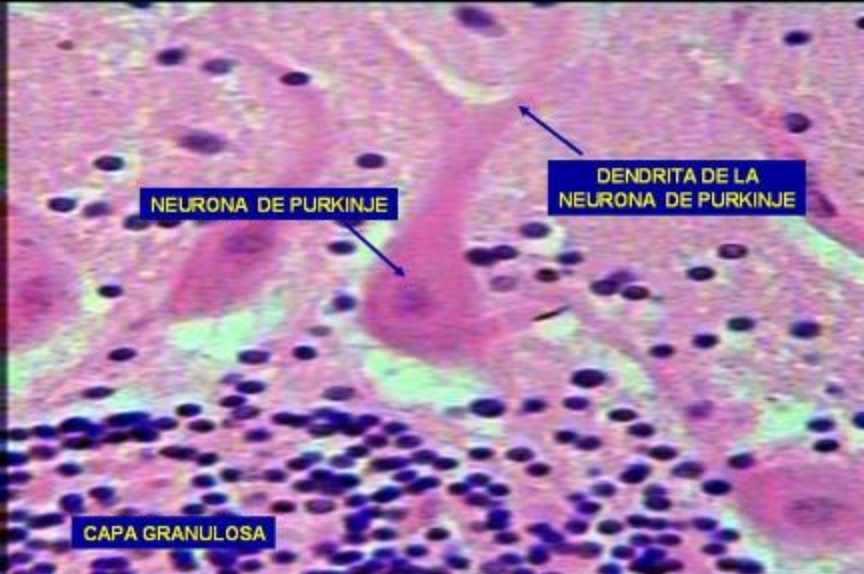
Cerebro. Coloración  
Cresil- violeta luxol fst blue. 40X.

**CAPA MOLECULAR**

**NEURONAS DE PURKINJE**

**CAPA GRANULOSA**

**Corteza cerebelosa.  
Hematoxilina/Eosina. 400X.**



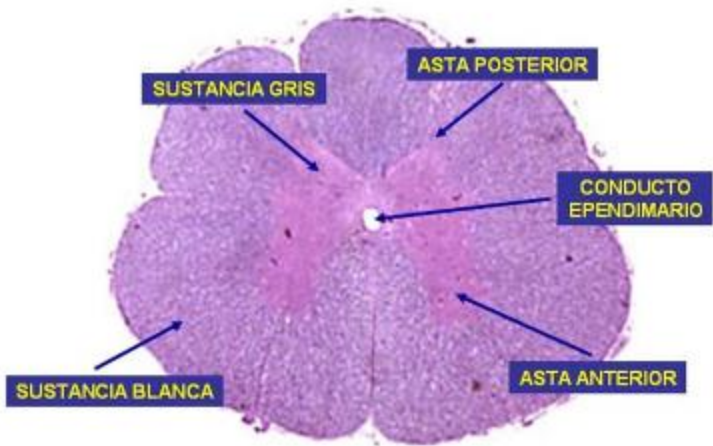
NEURONA DE PURKINJE

DENDRITA DE LA NEURONA DE PURKINJE

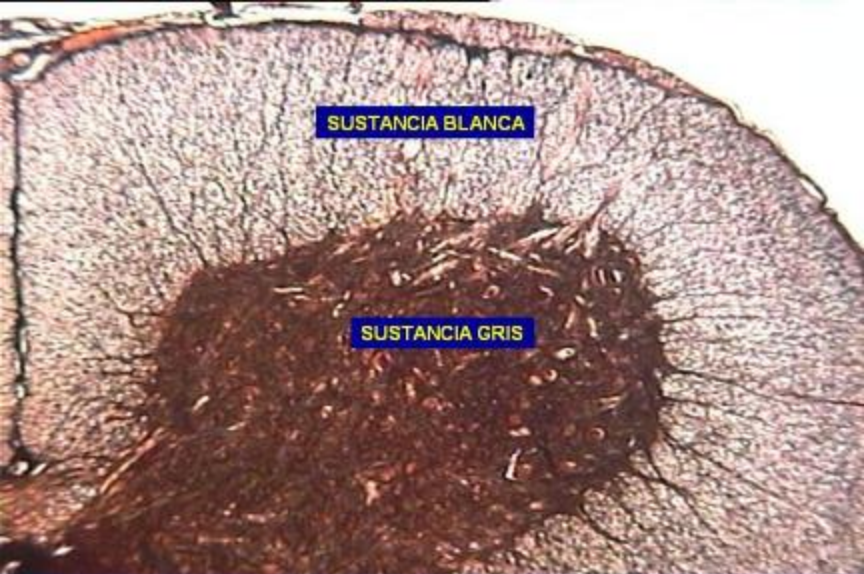
CAPA GRANULOSA

Corteza cerebelosa.

Hematoxilina/Eosina. 500X.



**Médula espinal. Tejido Nervioso.  
Hematoxilina/Eosina. 40X.**



**Médula espinal. Tejido Nervioso.  
Impregnación argéntica. 200X.**



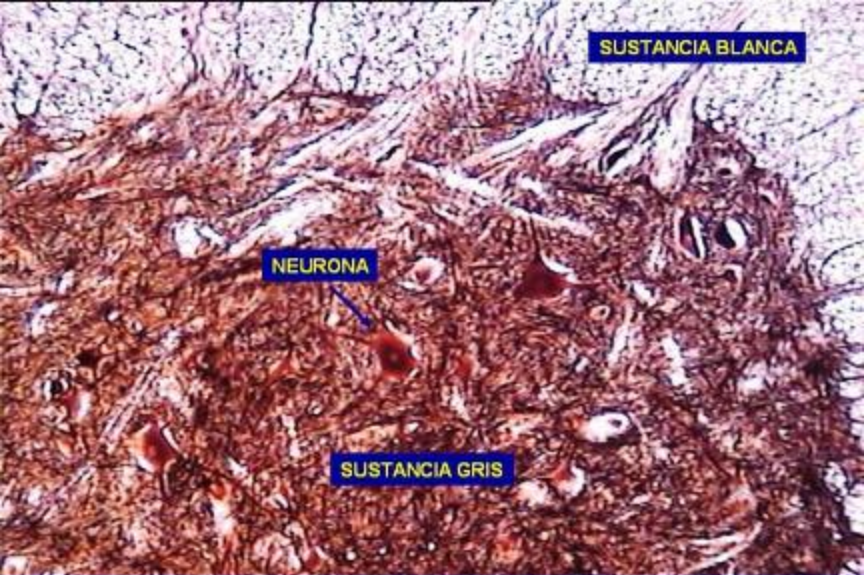


SUSTANCIA BLANCA

NEURONA

SUSTANCIA GRIS

**Médula espinal. Tejido Nervioso.  
Impregnación argéntica. 400X.**



**Médula espinal. Tejido Nervioso.  
Impregnación argéntica. 400X.**