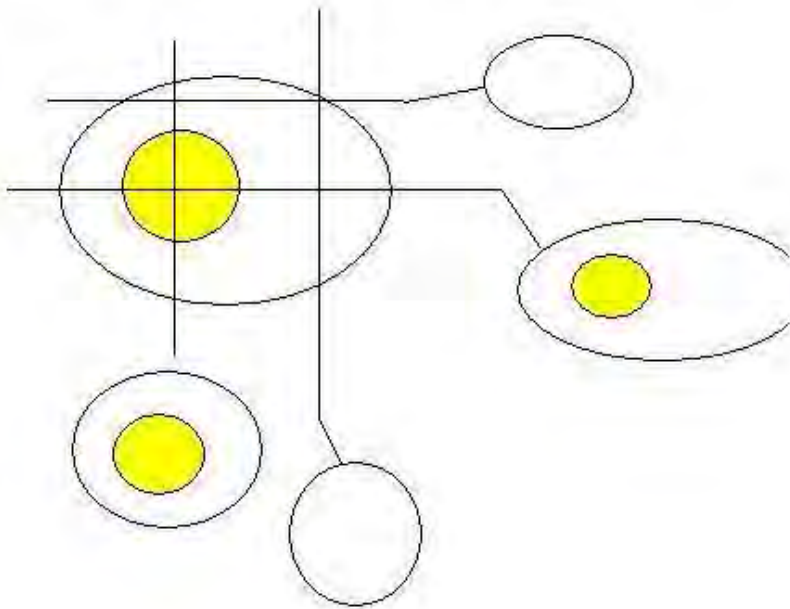
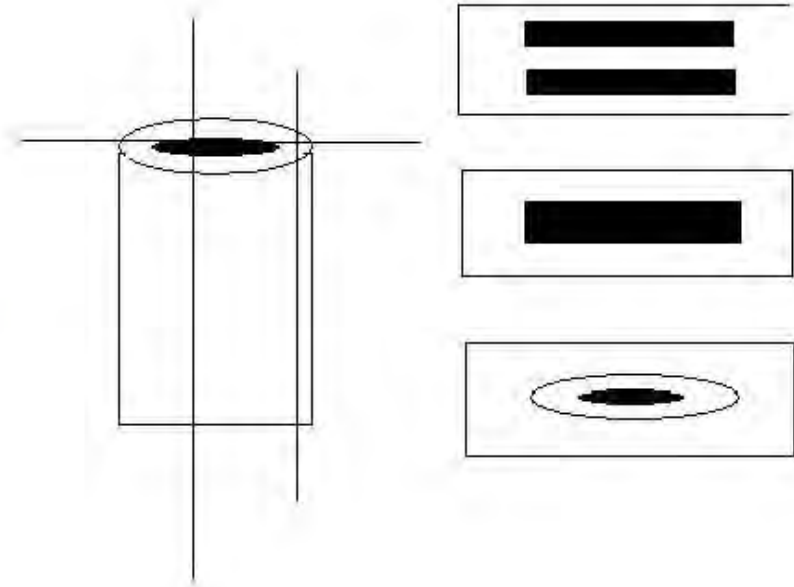


# Conocimiento de los planos de corte histológicos.

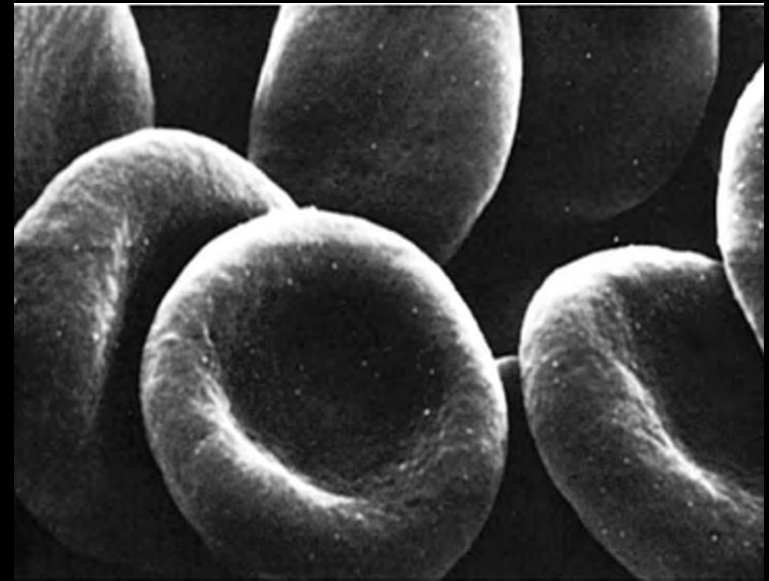
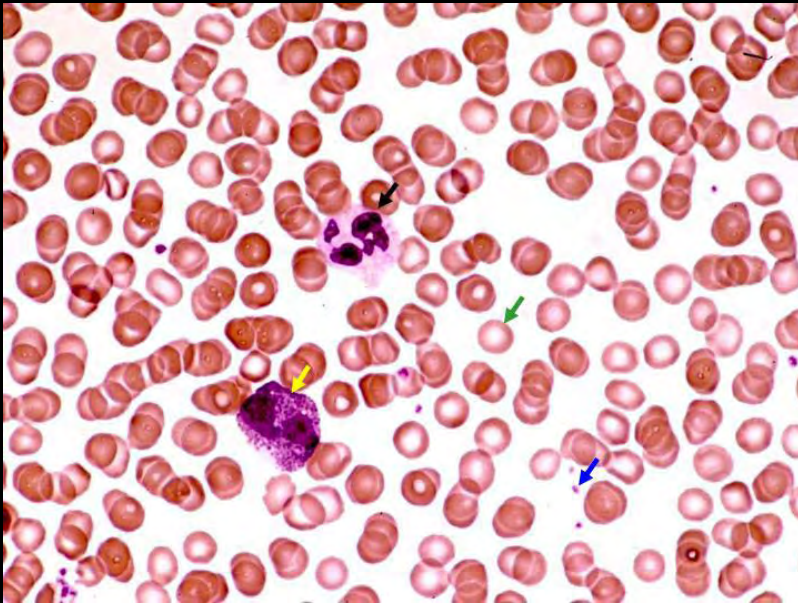
Planos de corte de un huevo

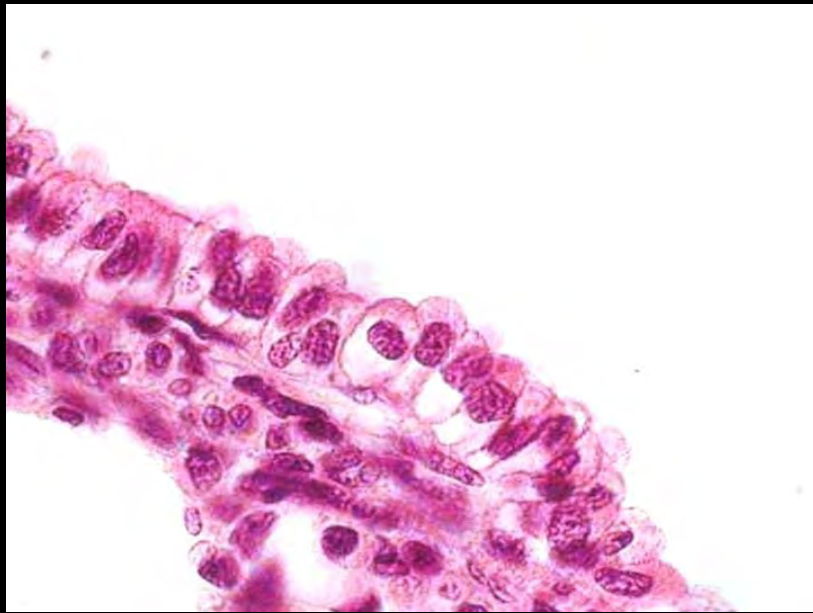


Planos de corte de un tubo



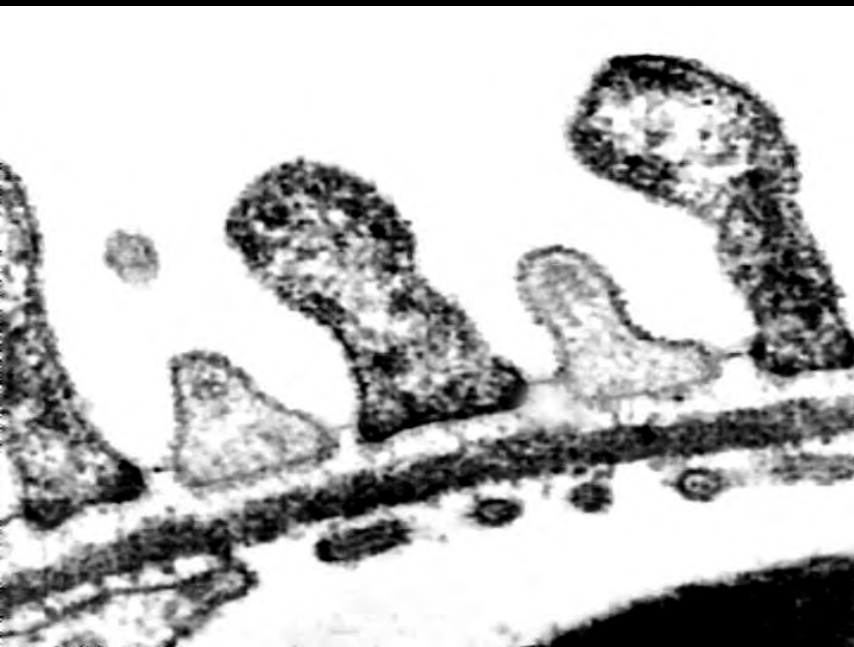
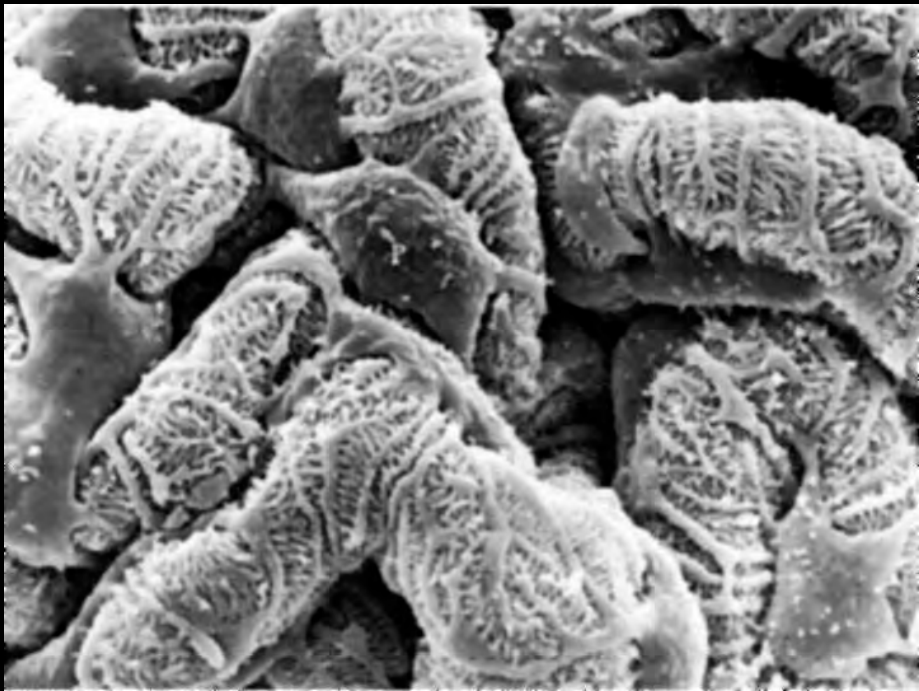
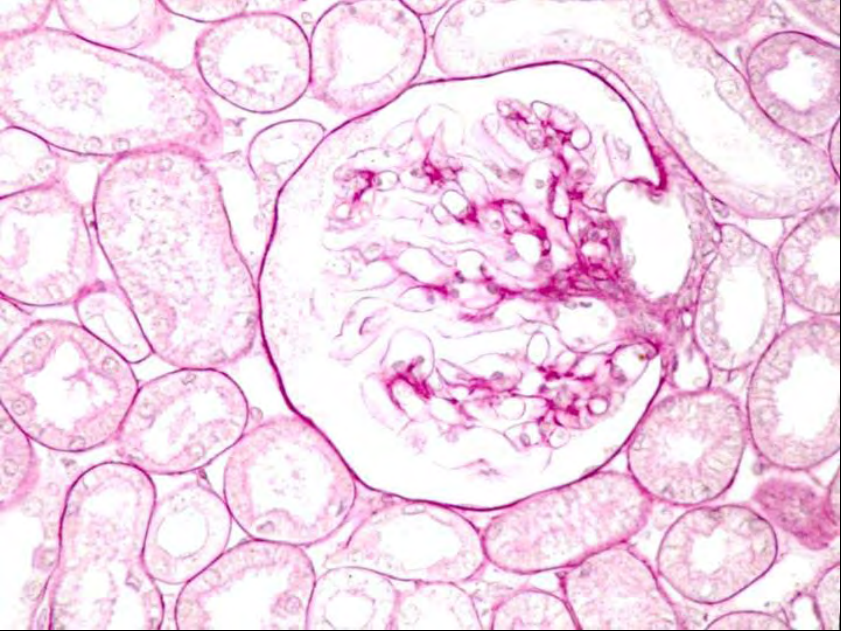
# En Histología y Embriología el tipo de Microscopio empleado



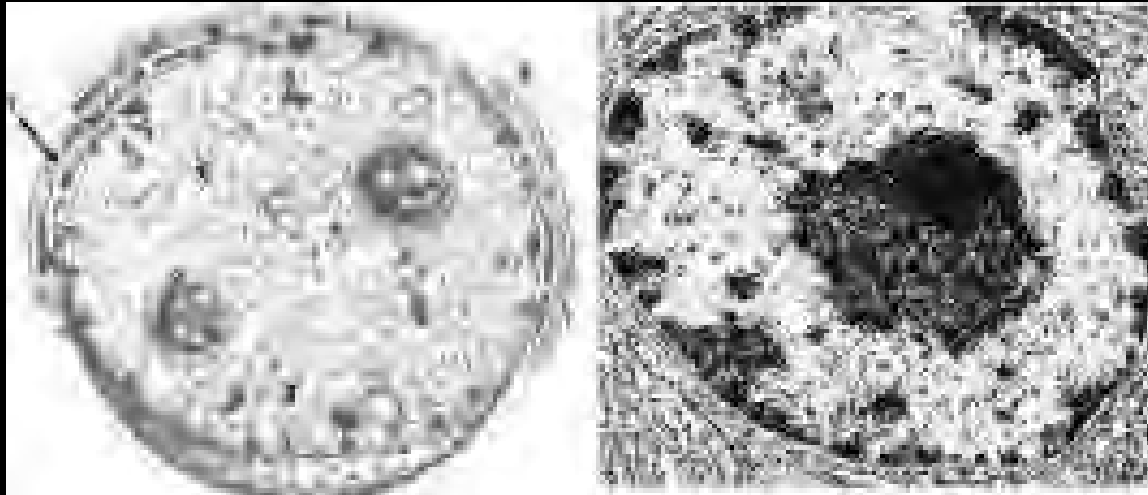


*Belen Z. Iglesias Ramirez*  
2012



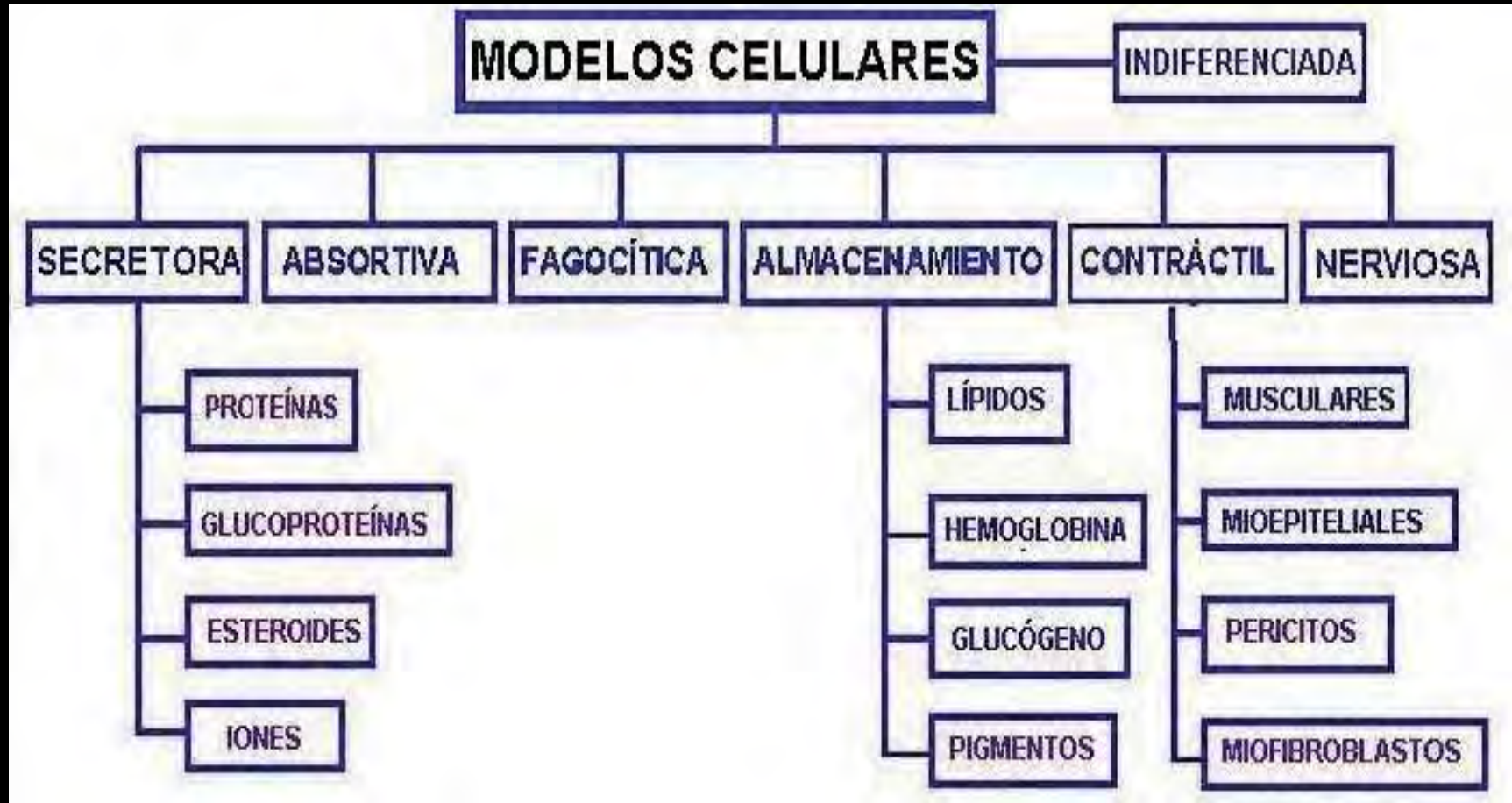


# Trabajo previo con modelos o esquemas de las estructuras



*Belen Z. Iglesias Ramirez*  
2012

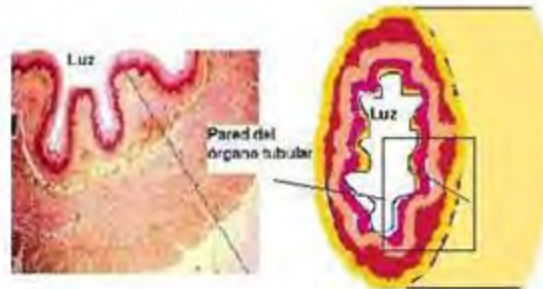
# Modelos celulares



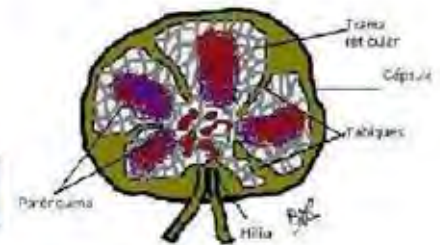
*Belen G. Iglesias Ramírez*

*2012*

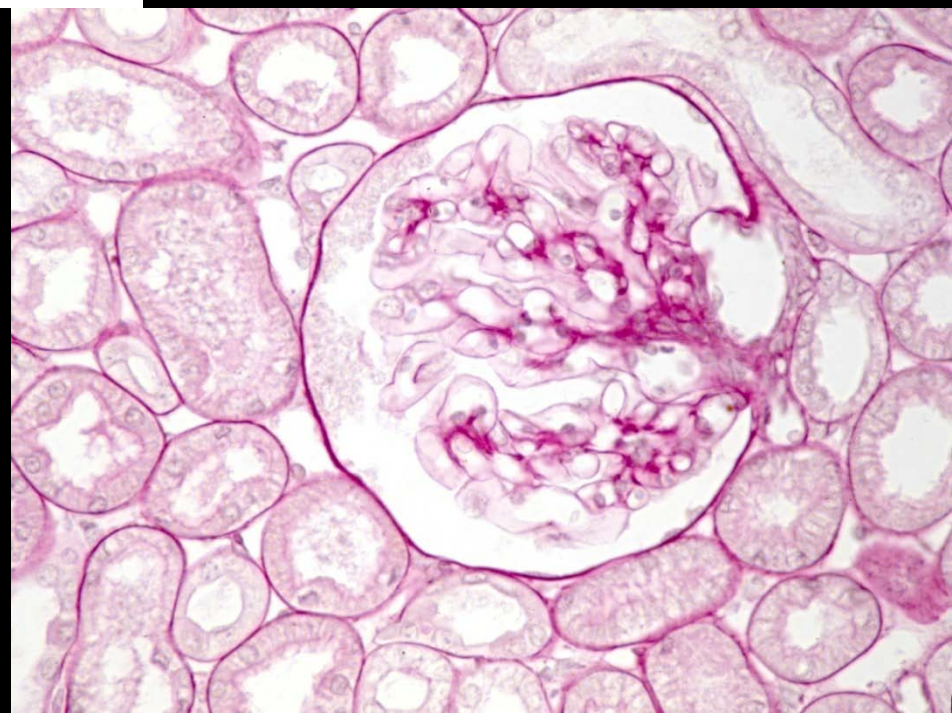
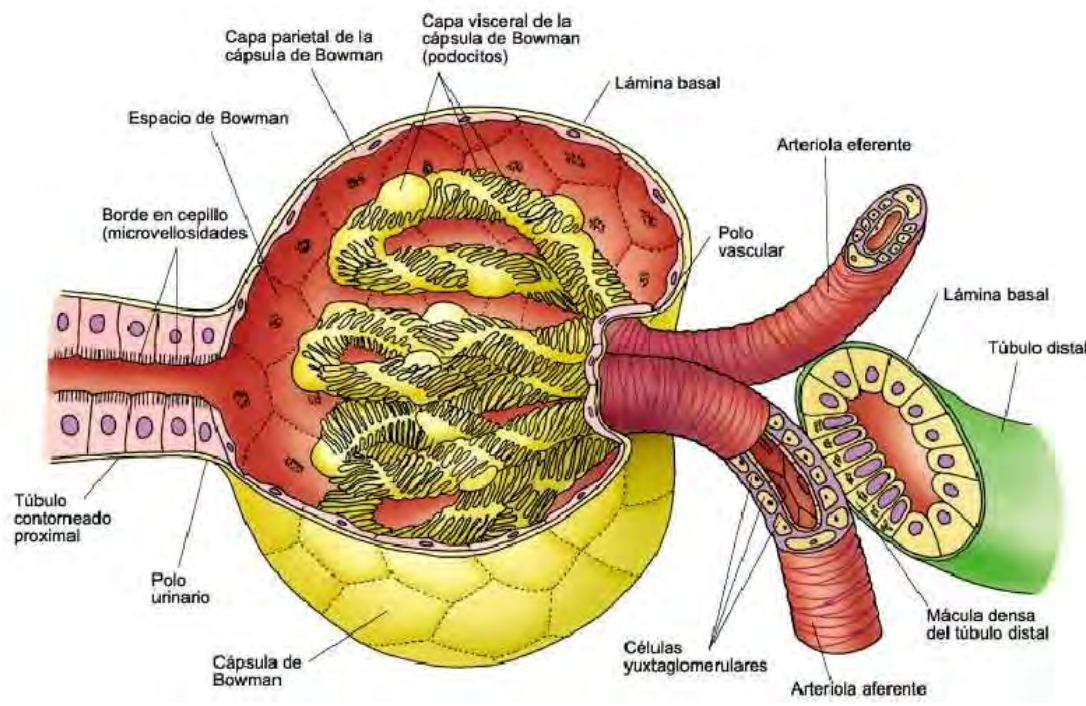
# Modelo de órgano tubular



# Modelo de órgano macizo







*Belen Z. Iglesias Ramirez*  
 2012