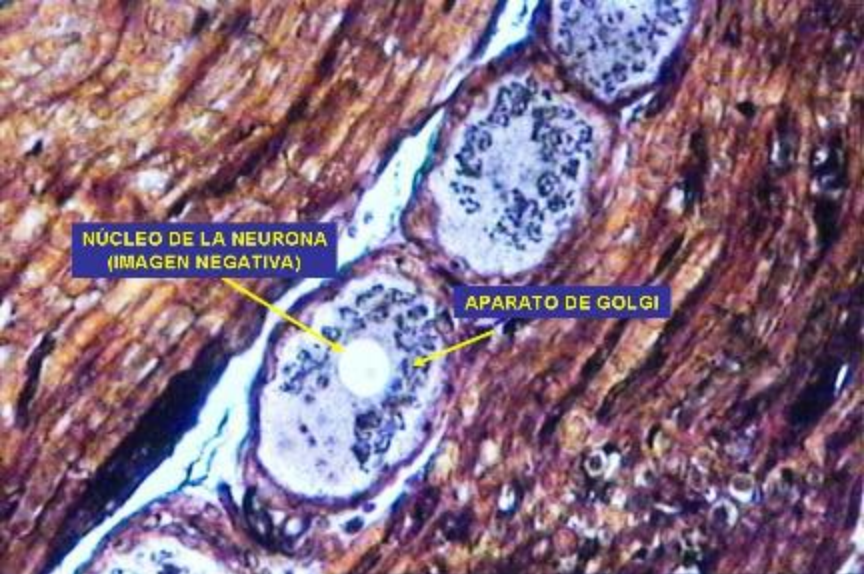




Gránulos de Heterocromatina

This transmission electron micrograph shows a large, electron-dense nucleus of a macrophage. The nucleus is characterized by several dark, irregularly shaped granules of heterochromatin. Two blue arrows originate from a text box in the upper left and point to two of these dark granules. The surrounding cytoplasm contains various organelles, including mitochondria and endoplasmic reticulum, which appear as lighter, more granular structures.

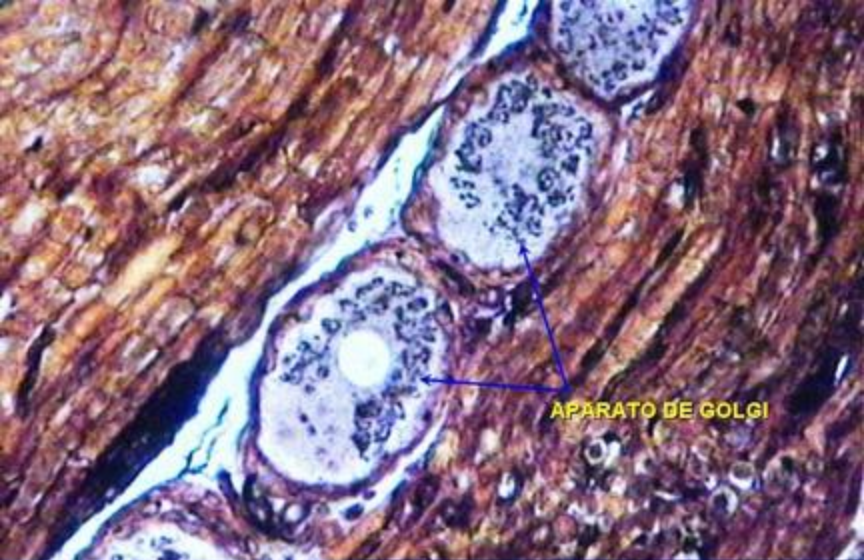
**Núcleo de Macrófago.  
Fotomicrografía electrónica de transmisión**



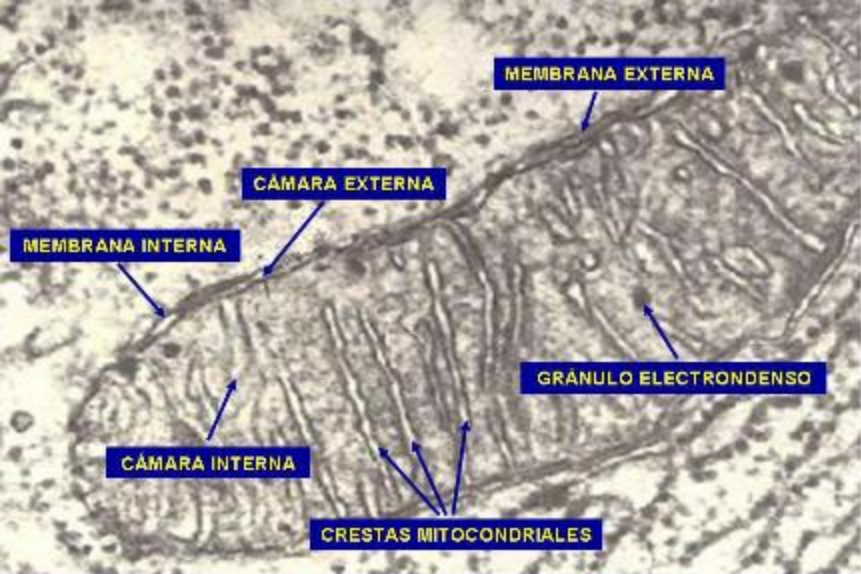
**NÚCLEO DE LA NEURONA  
(IMAGEN NEGATIVA)**

**APARATO DE GOLGI**

**Ganglio cráneoespinal. Aparato de Golgi.  
Impregnación argéntica. 400X.**

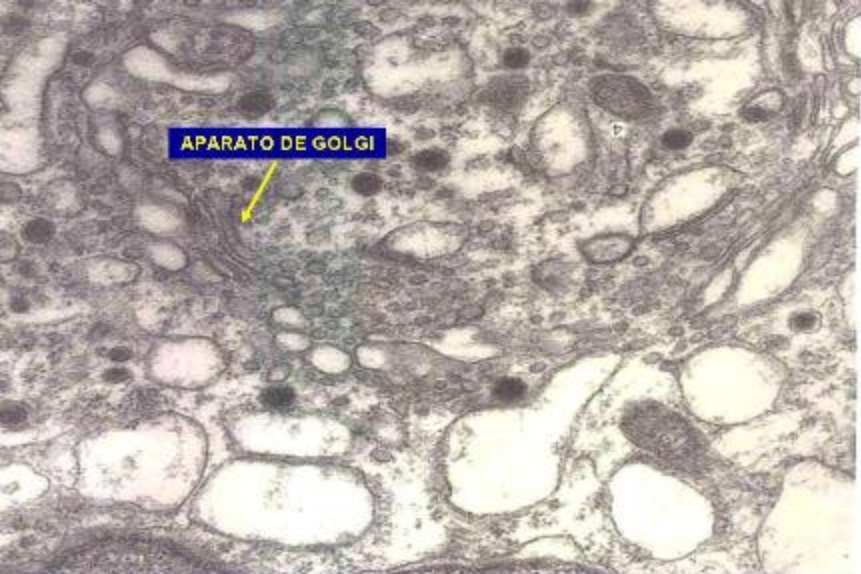


**Ganglio espinal. Aparato de Golgi.  
Impregnación argéntica. 400X**



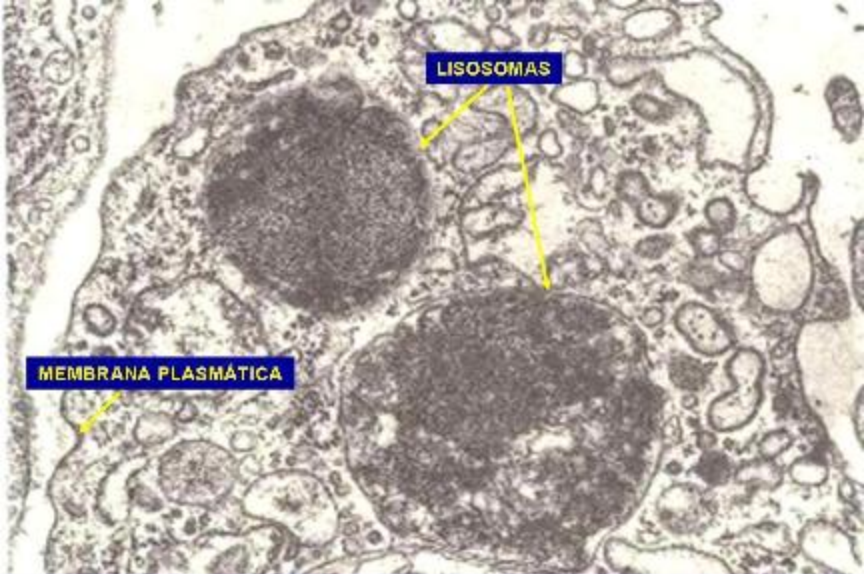
**Mitocondria.**

**Fotomicrografía electrónica de transmisión.**



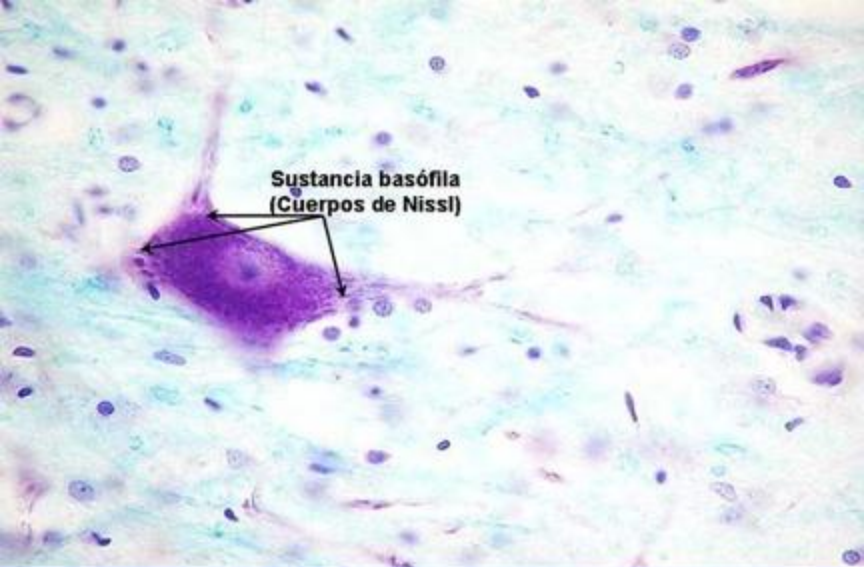
**APARATO DE GOLGI**

**Aparato de Golgi.  
Fotomicrografía electrónica de transmisión.**



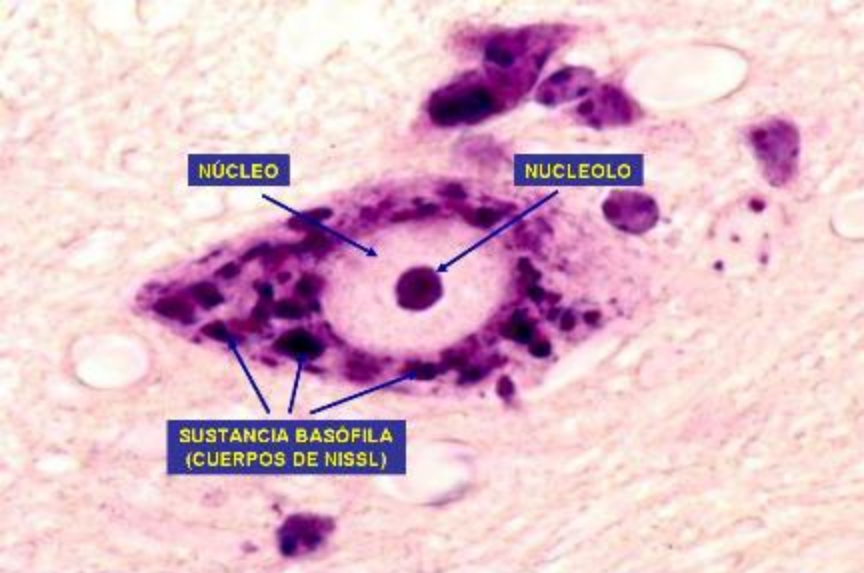
**Lisosomas.**

**Fotomicrografía electrónica de transmisión.**



Sustancia basófila  
(Cuerpos de Nissl)

**Neurona. Sustancia basófila. Cuerpos de Nissl  
Col. Violeta de cresilo. 400X**



**NÚCLEO**

**NUCLEOLO**

**SUSTANCIA BASÓFILA  
(CUERPOS DE NISL)**

**Neurona. Sustancia basófila. Cuerpos de Nissl.  
Violeta de Cresilo. 1000X.**